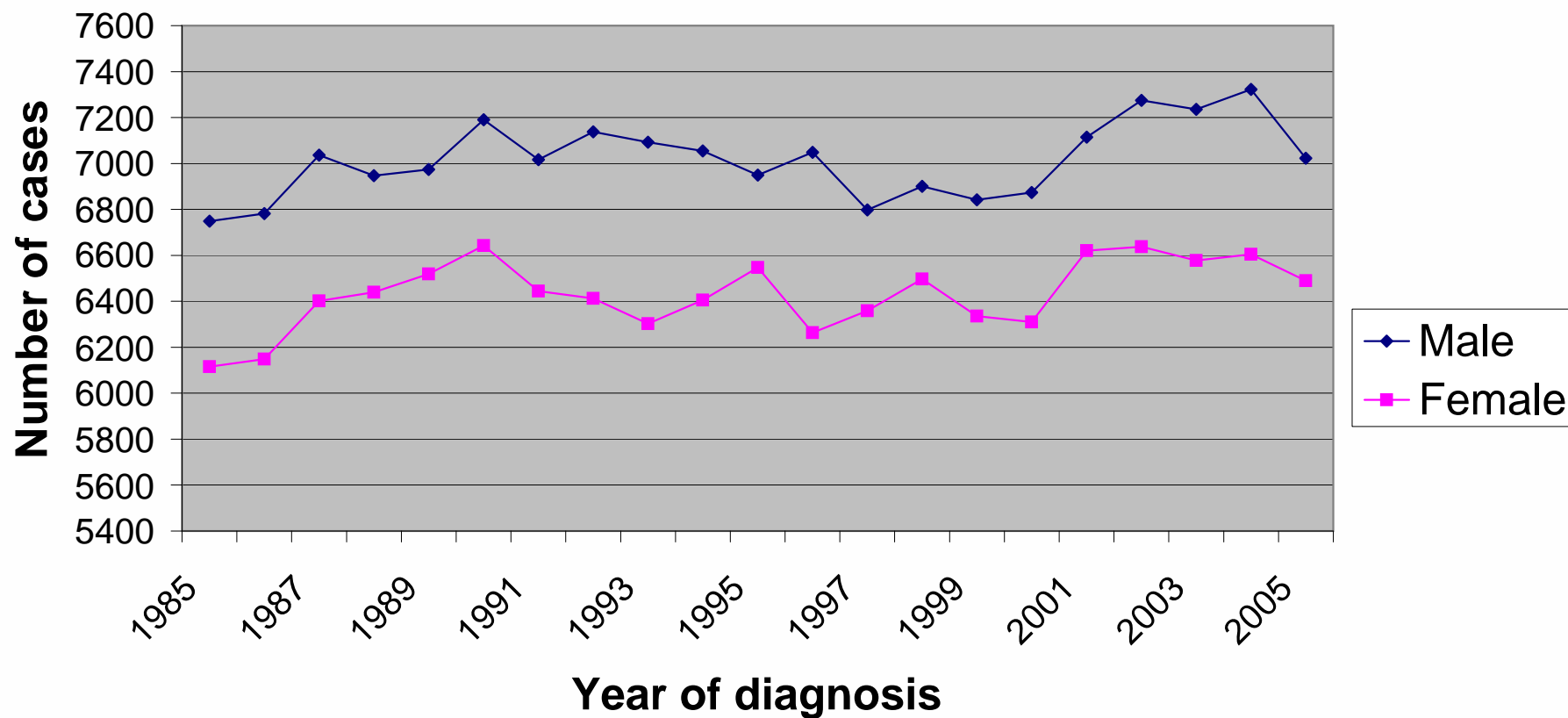
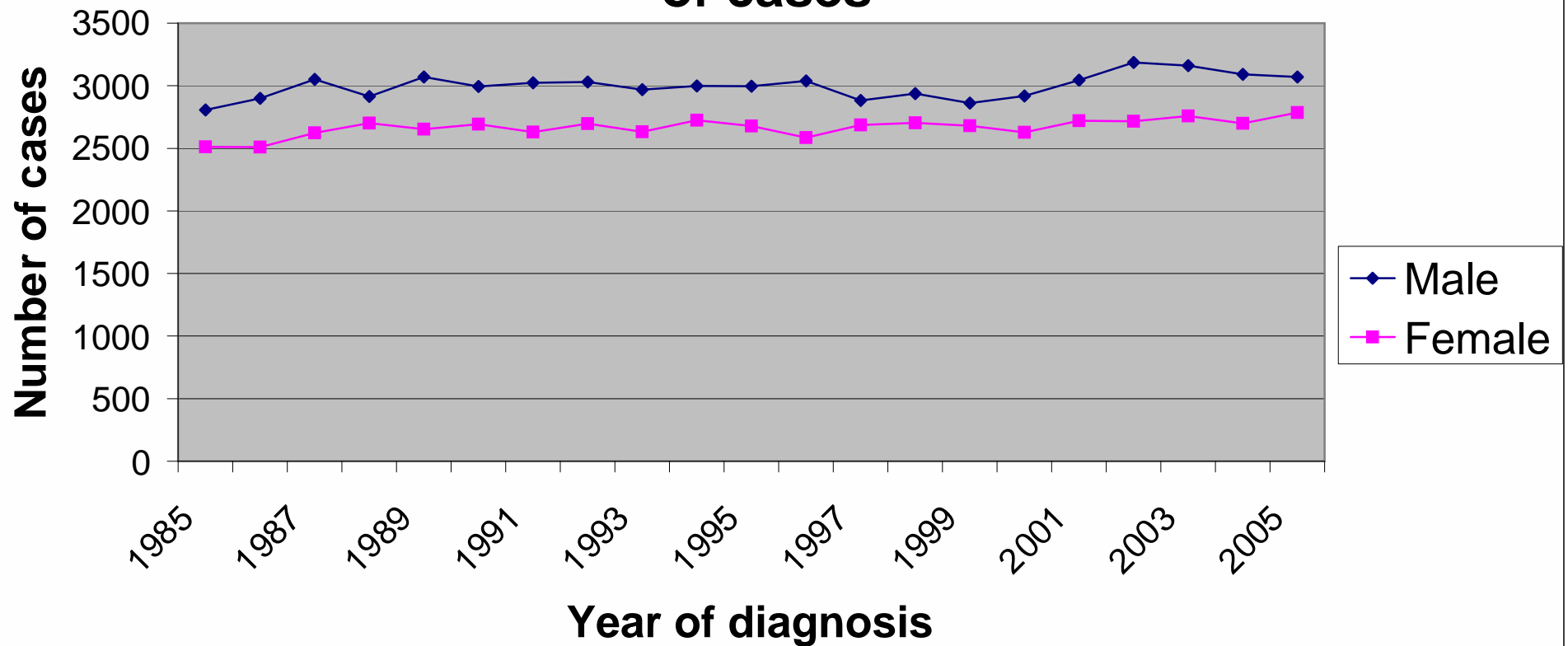


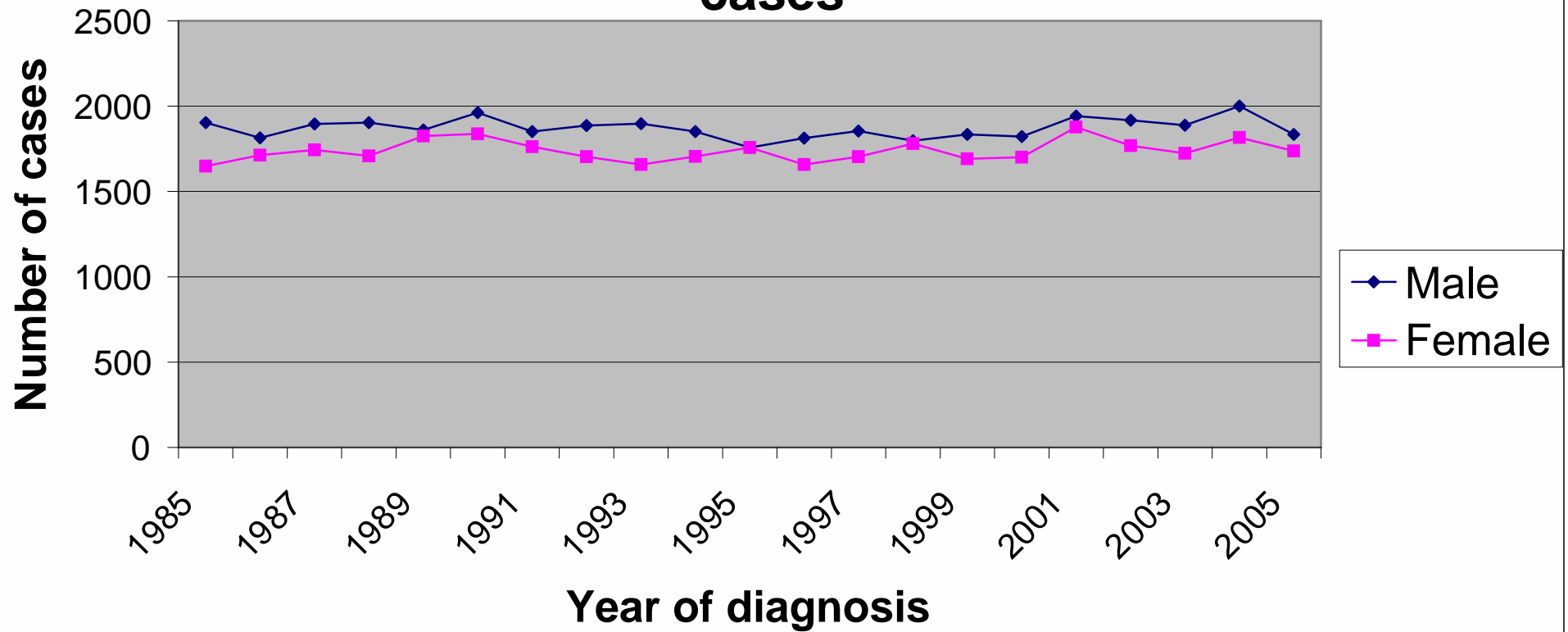
Mortality from all cancers exc non-melanoma skin in the East of England: Number of cases



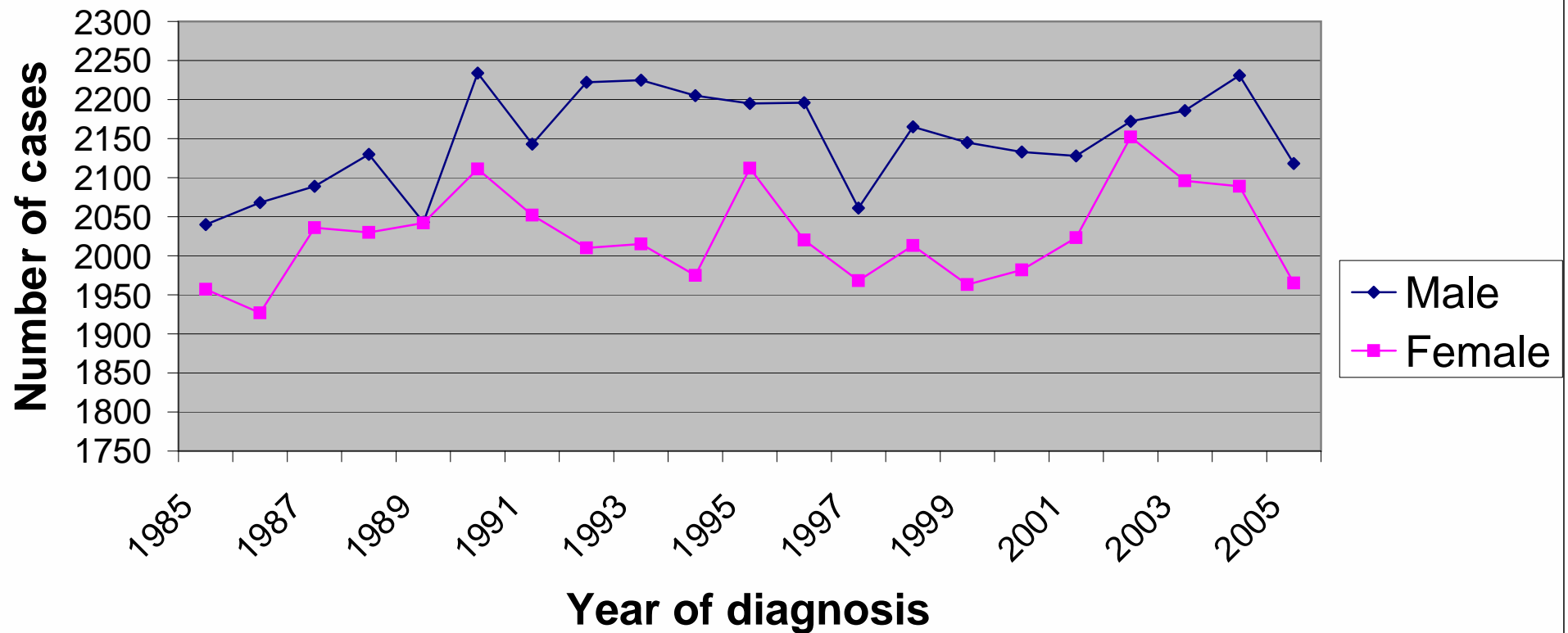
Mortality from all cancers exc non-melanoma skin in Norfolk, Suffolk and Cambridgeshire: Number of cases



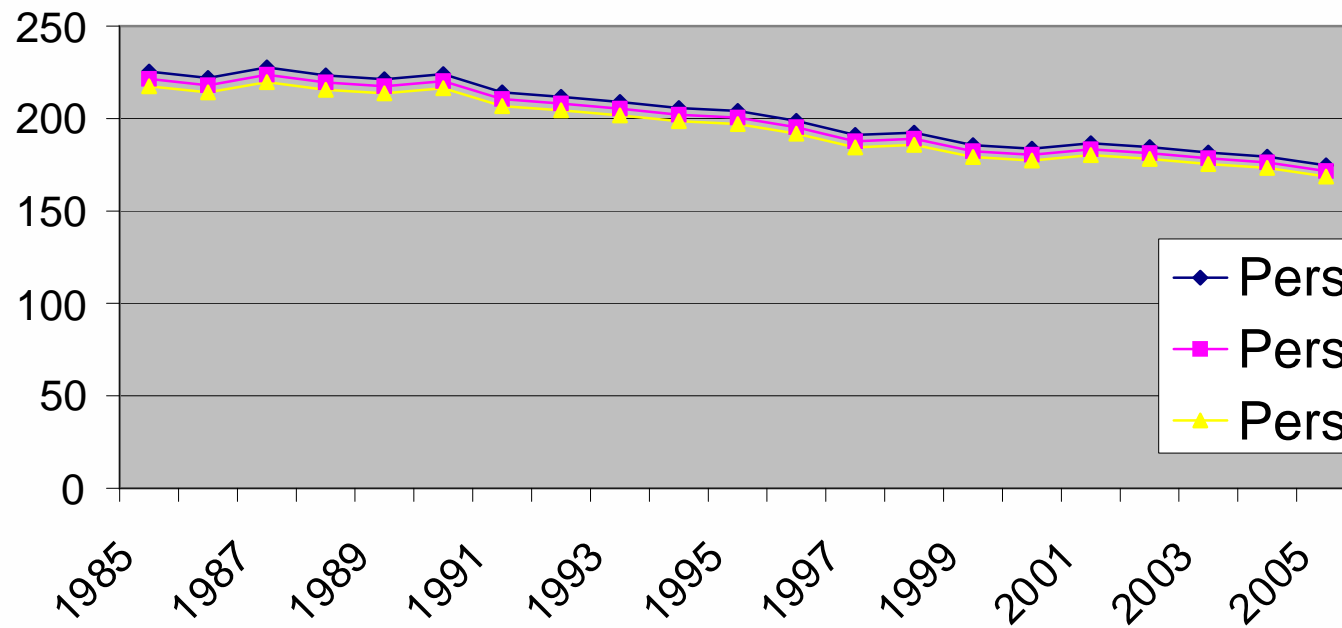
Mortality from all cancers exc non-melanoma skin in Bedfordshire and Hertfordshire: Number of cases



Mortality from all cancers exc non-melanoma skin in Essex: Numbr of cases

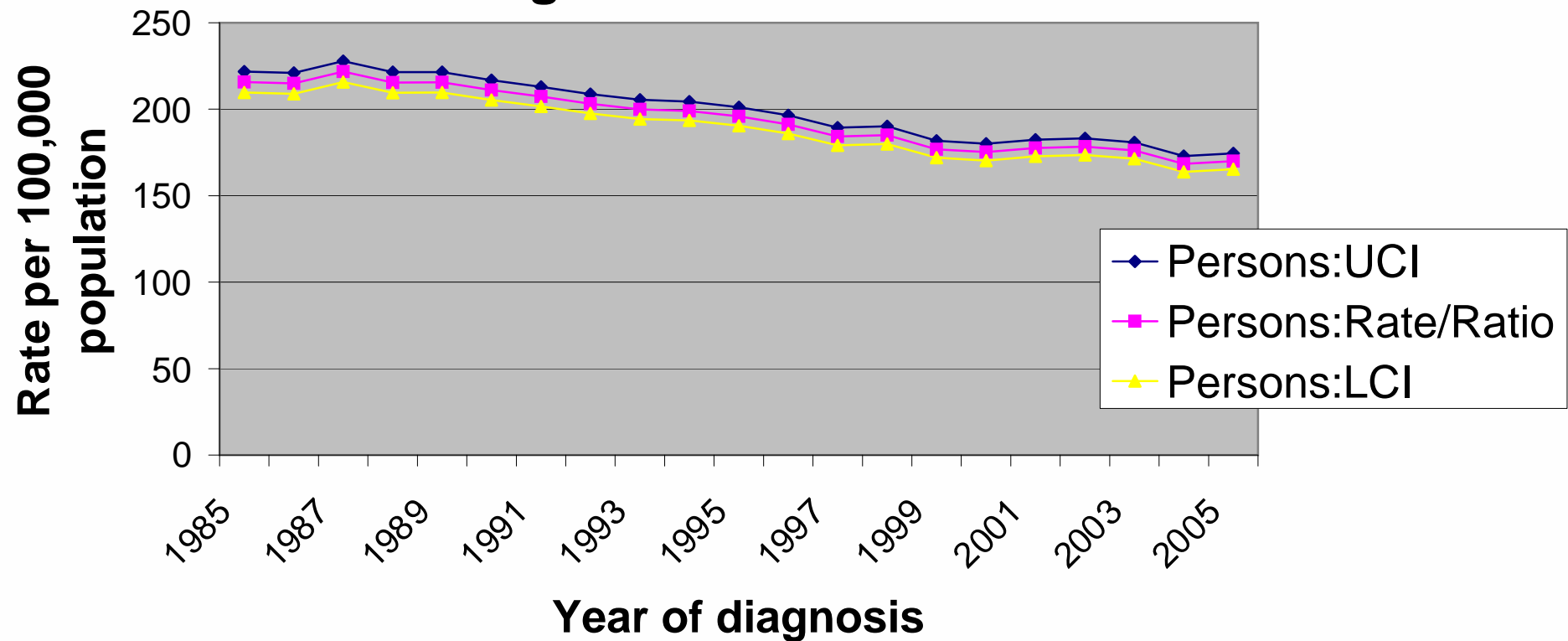


Rate per 100,000 population

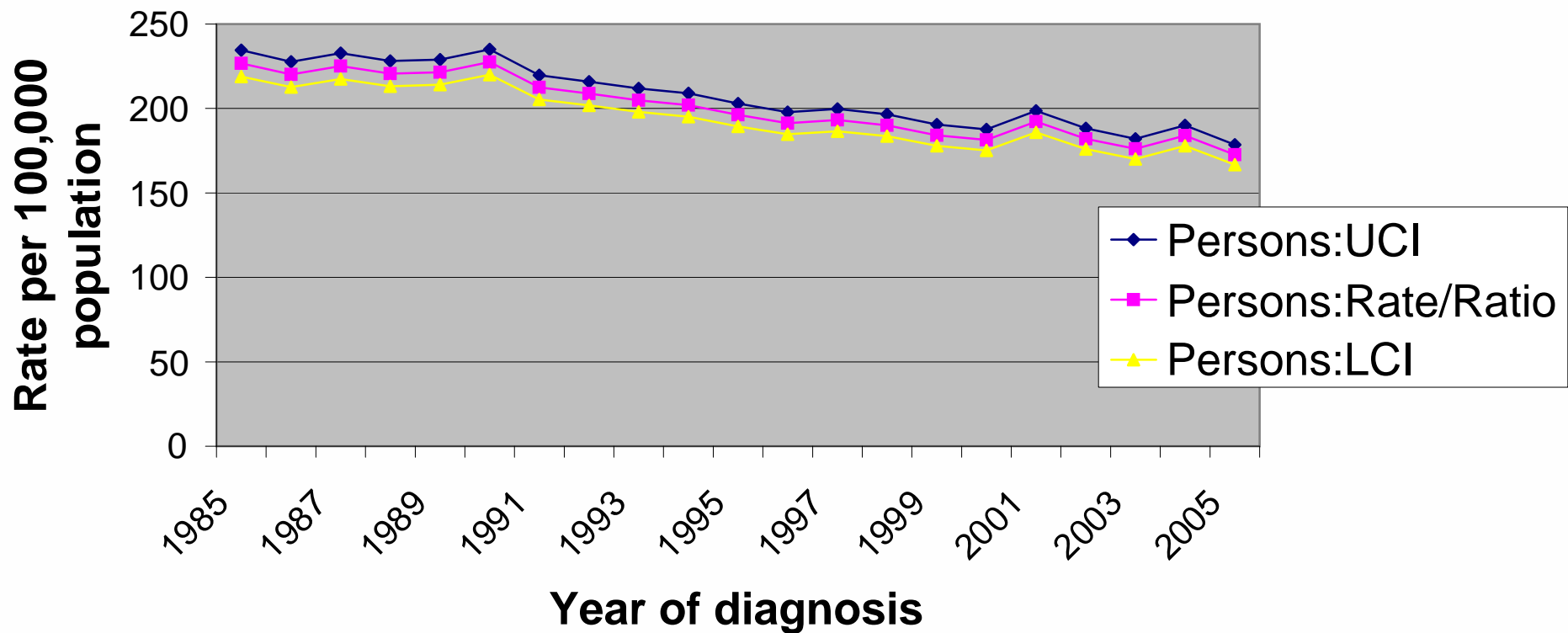


◆ Persons:UCI
■ Persons:Rate/Ratio
▲ Persons:LCI

Mortality from all cancers exc non-melanoma skin in Norfolk, Suffolk and Cambridgeshire: European age standardised rates



Mortality from all cancers exc non-melanoma skin in Bedfordshire and Hertfordshire: European age standardised rates



Mortality from all cancers exc non-melanoma skin in Essex: European age standardised rates

