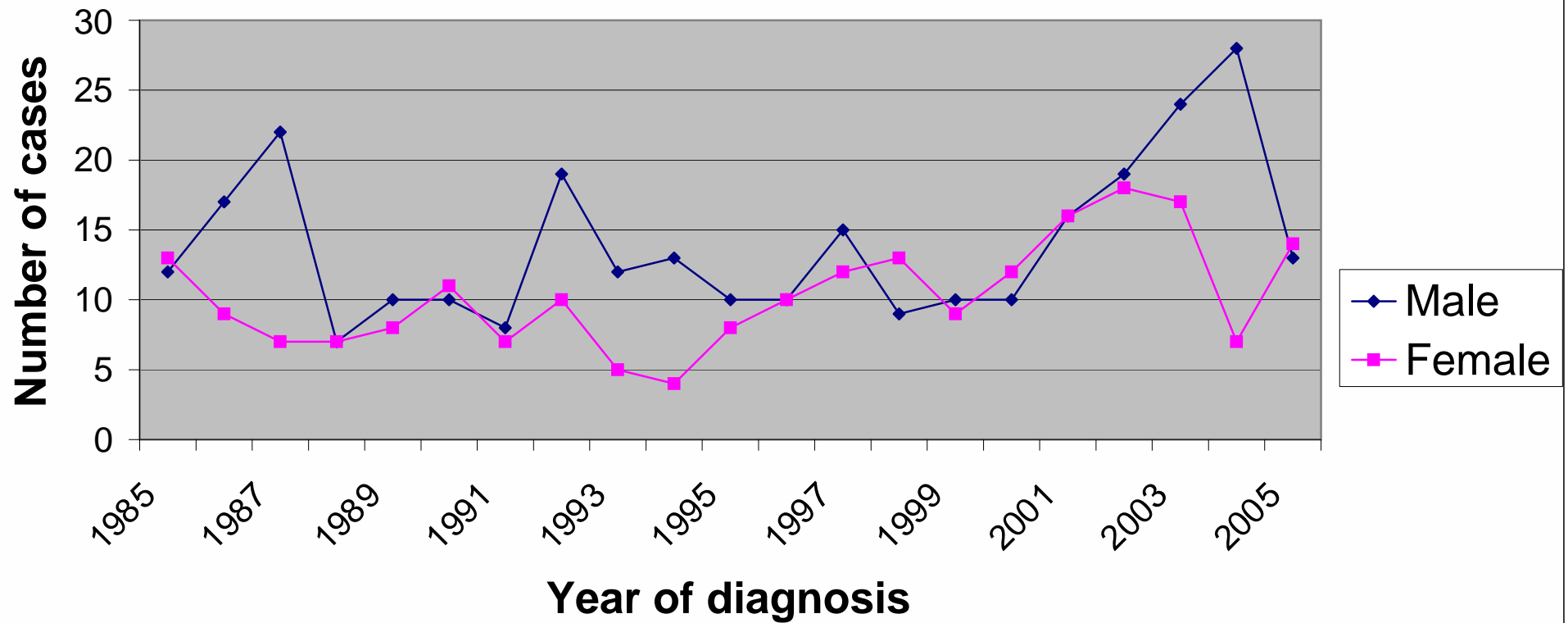
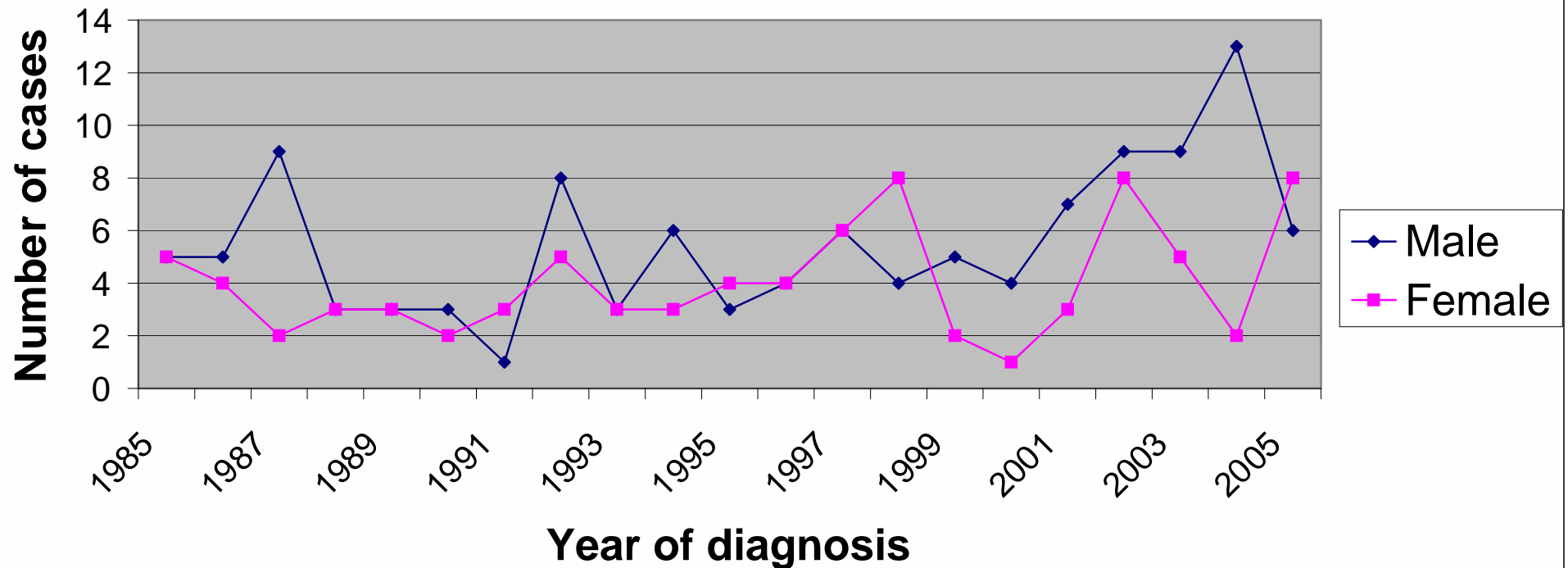


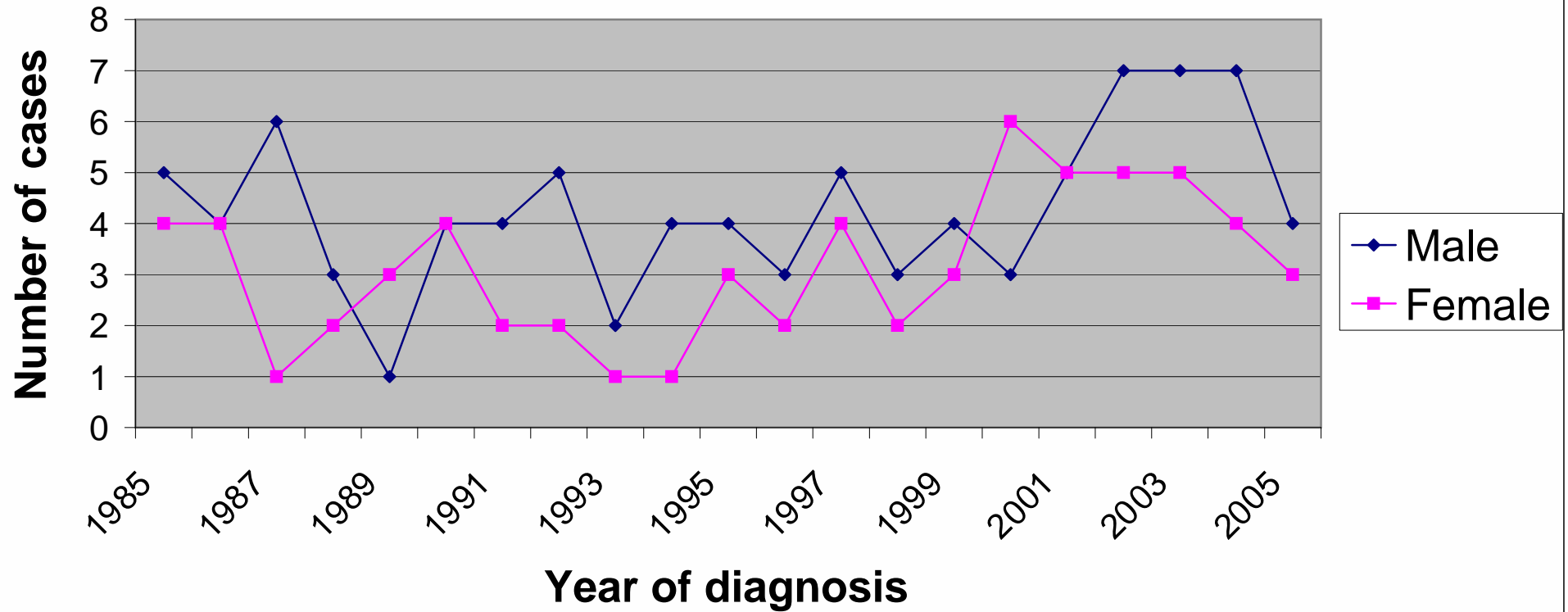
## Mortality from bone and articular cartilage cancer in the East of England: Number of cases



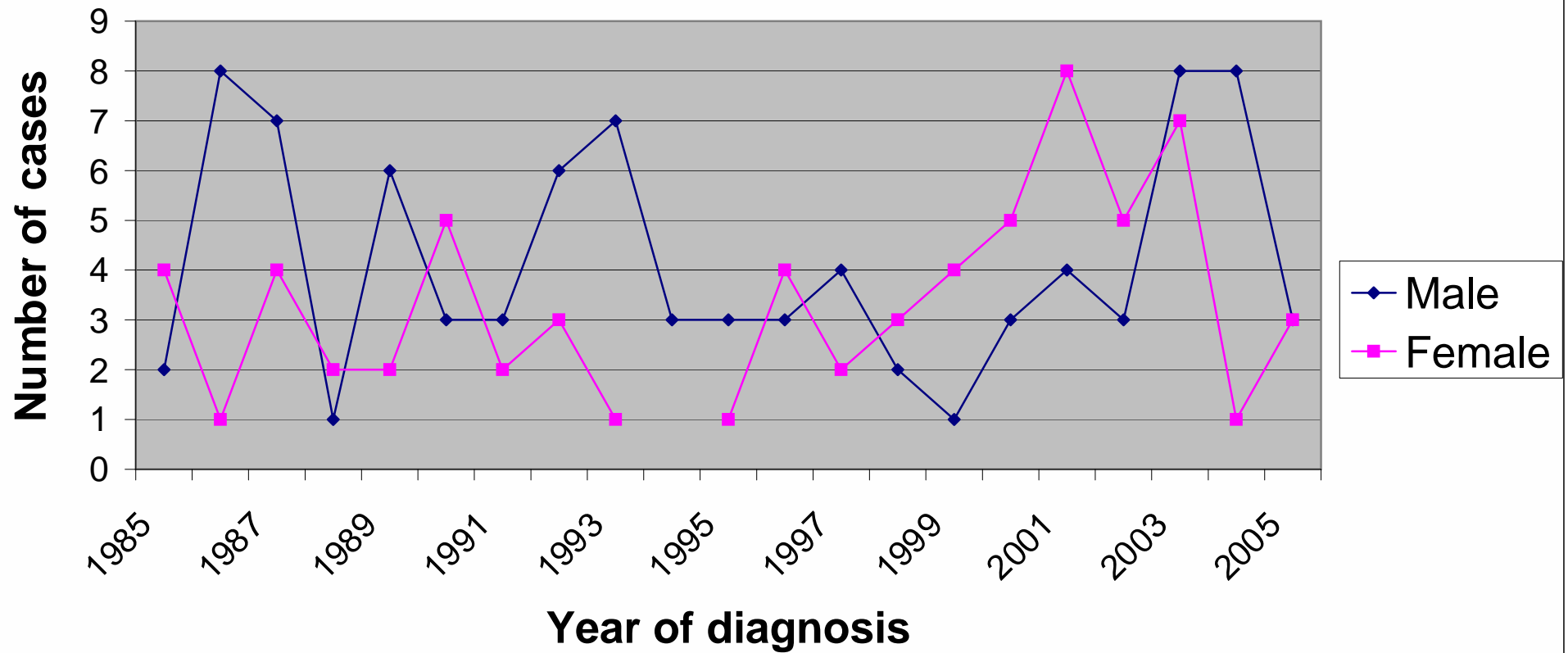
## Mortality from bone and articular cartilage cancer in Norfolk, Suffolk and Cambridgeshire: Number of cases



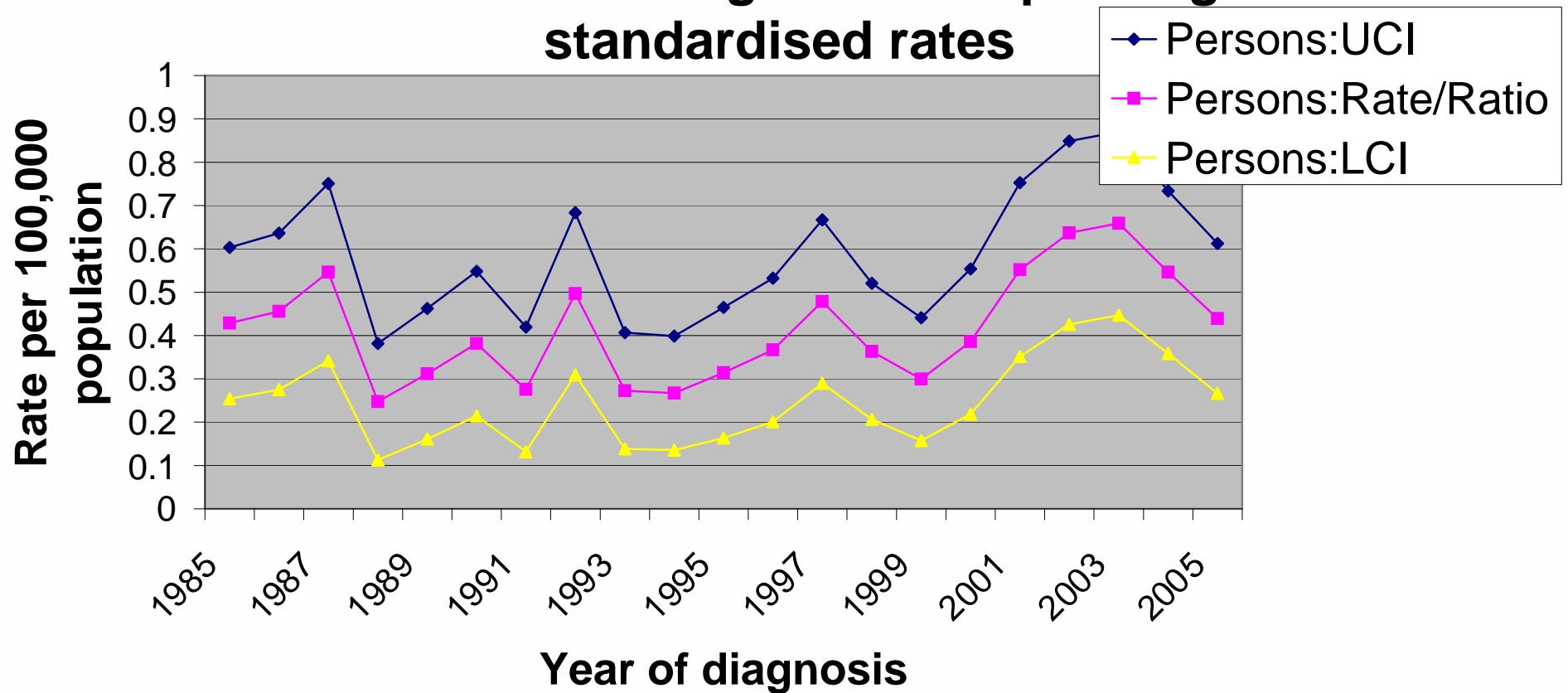
## Mortality from bone and articular cartilage cancer in Bedfordshire and Hertfordshire: Number of cases



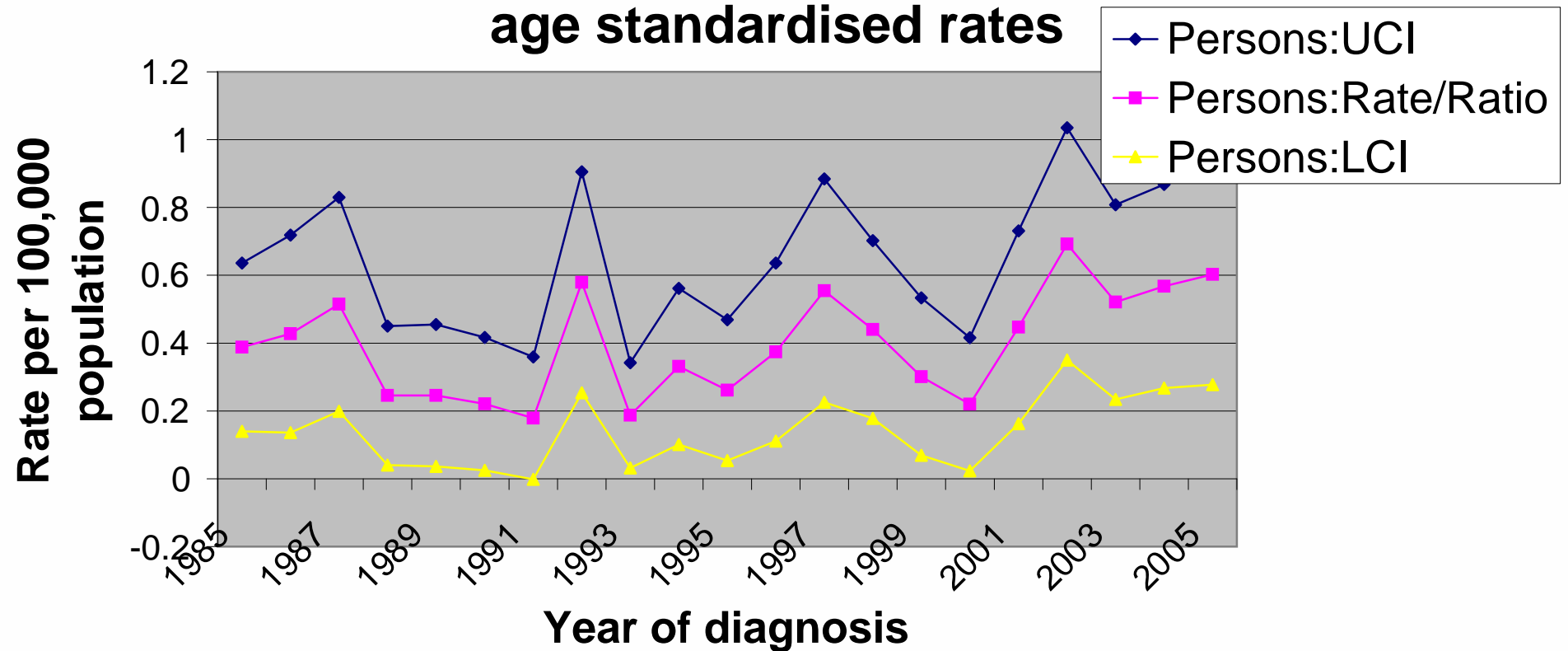
## Mortality from bone and articular cartilage cancer in Essex: Number of cases



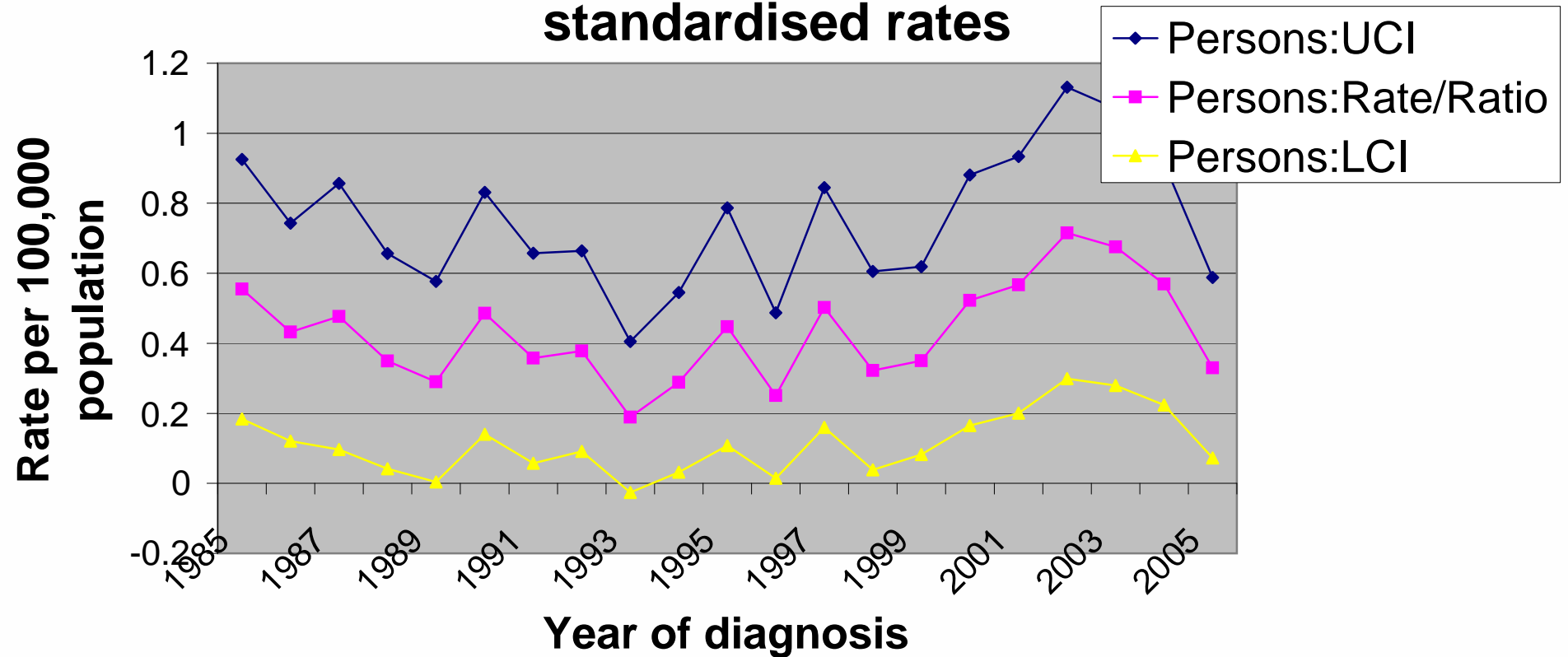
## Mortality from bone and articular cartilage cancer in the East of England: European age standardised rates



## Mortality from bone and articular cartilage cancer in Norfolk, Suffolk and Cambridgeshire: European age standardised rates



## Mortality from bone and articular cartilage cancer in Bedfordshire and Hertfordshire: European age standardised rates



## Mortality from bone and articular cartilage cancer in Essex: European age standardised rates

