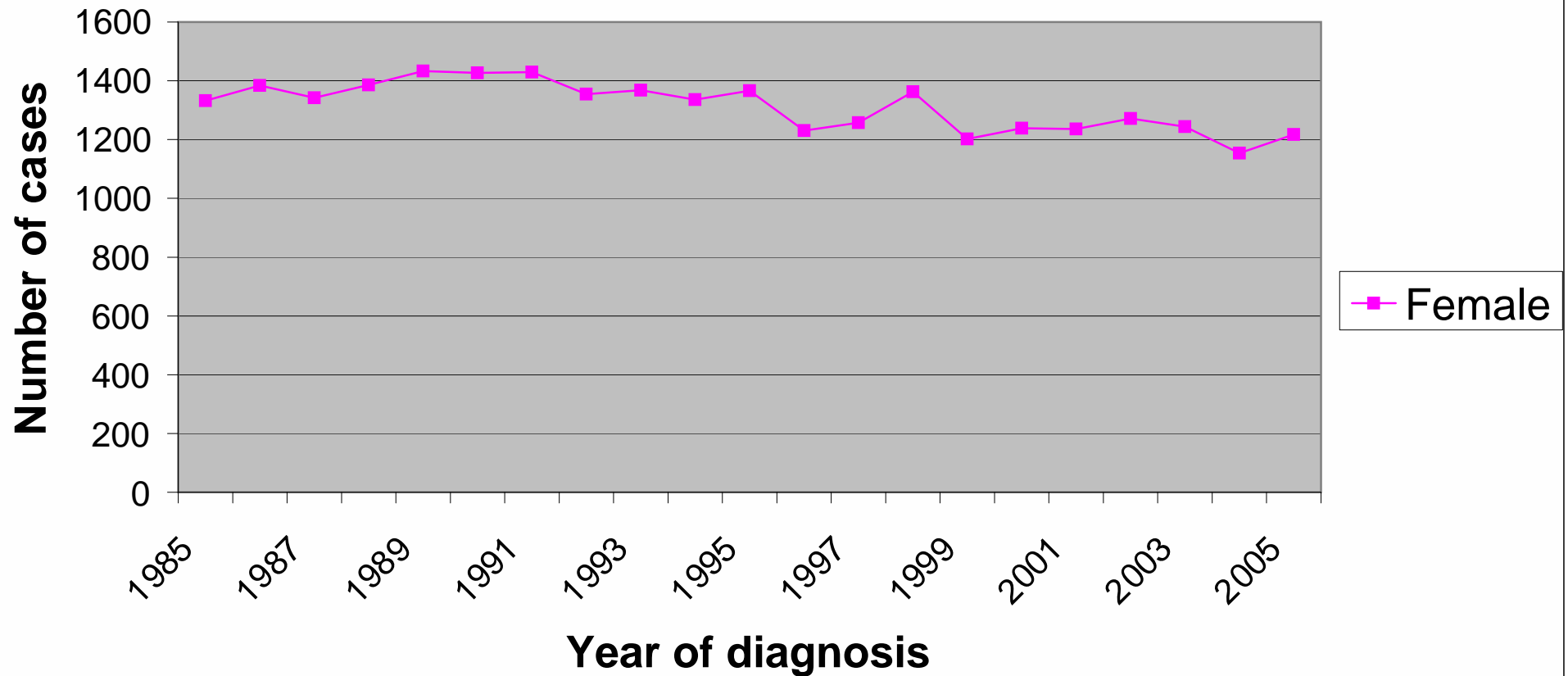
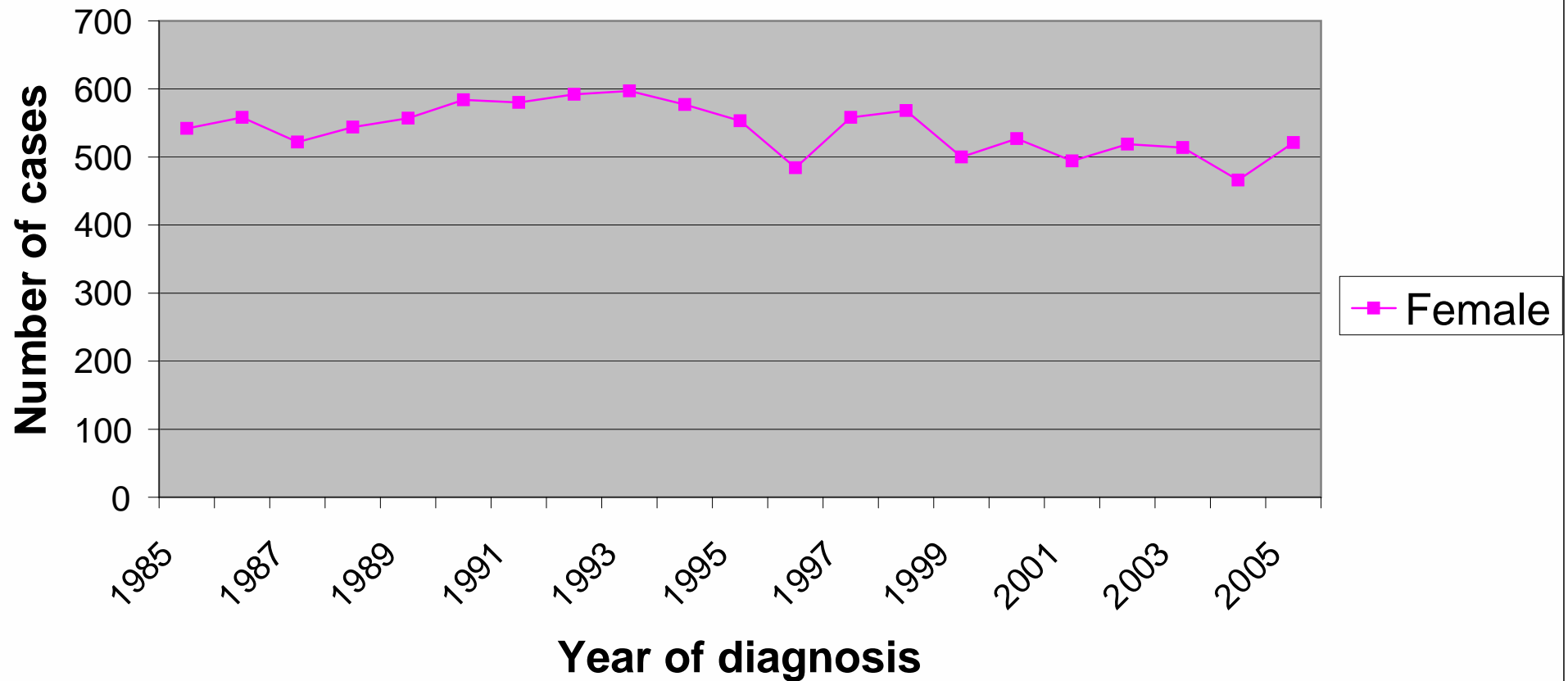


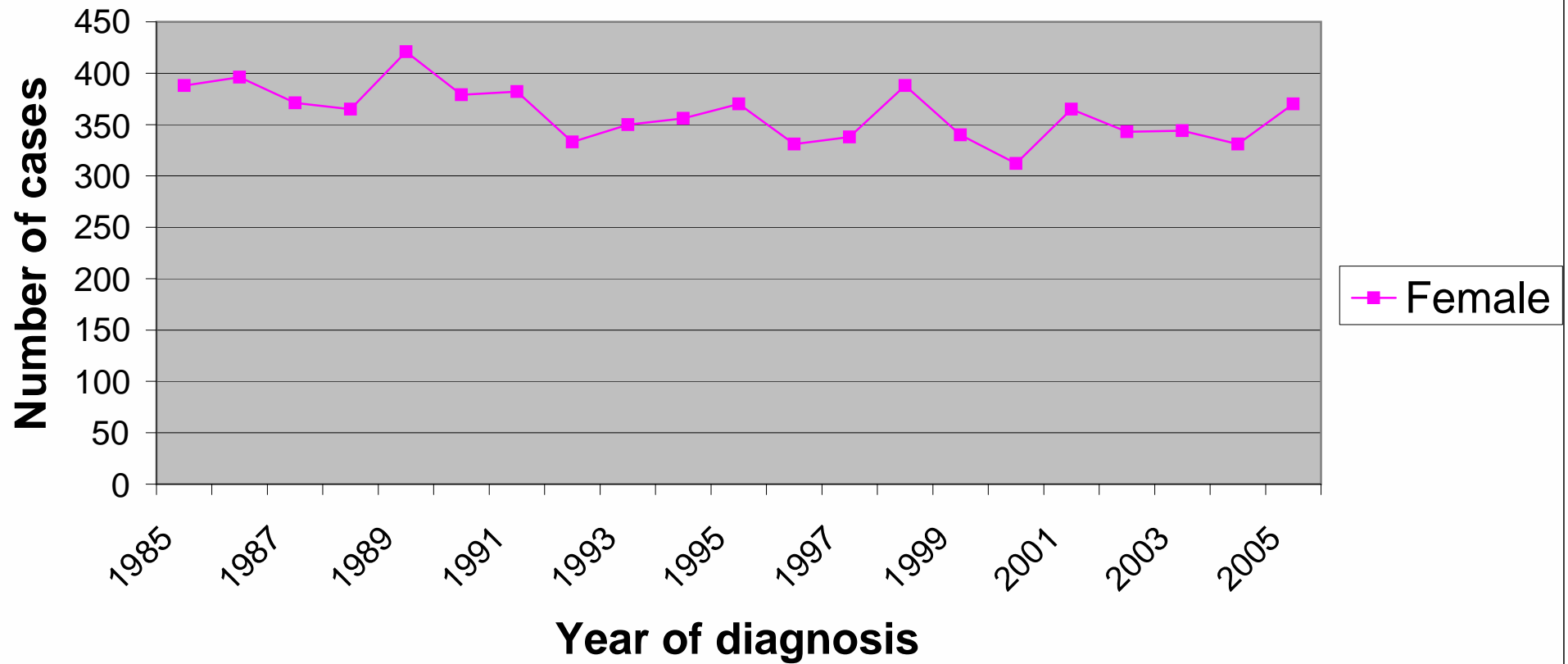
## Mortality from breast cancer in the East of England: Number of cases



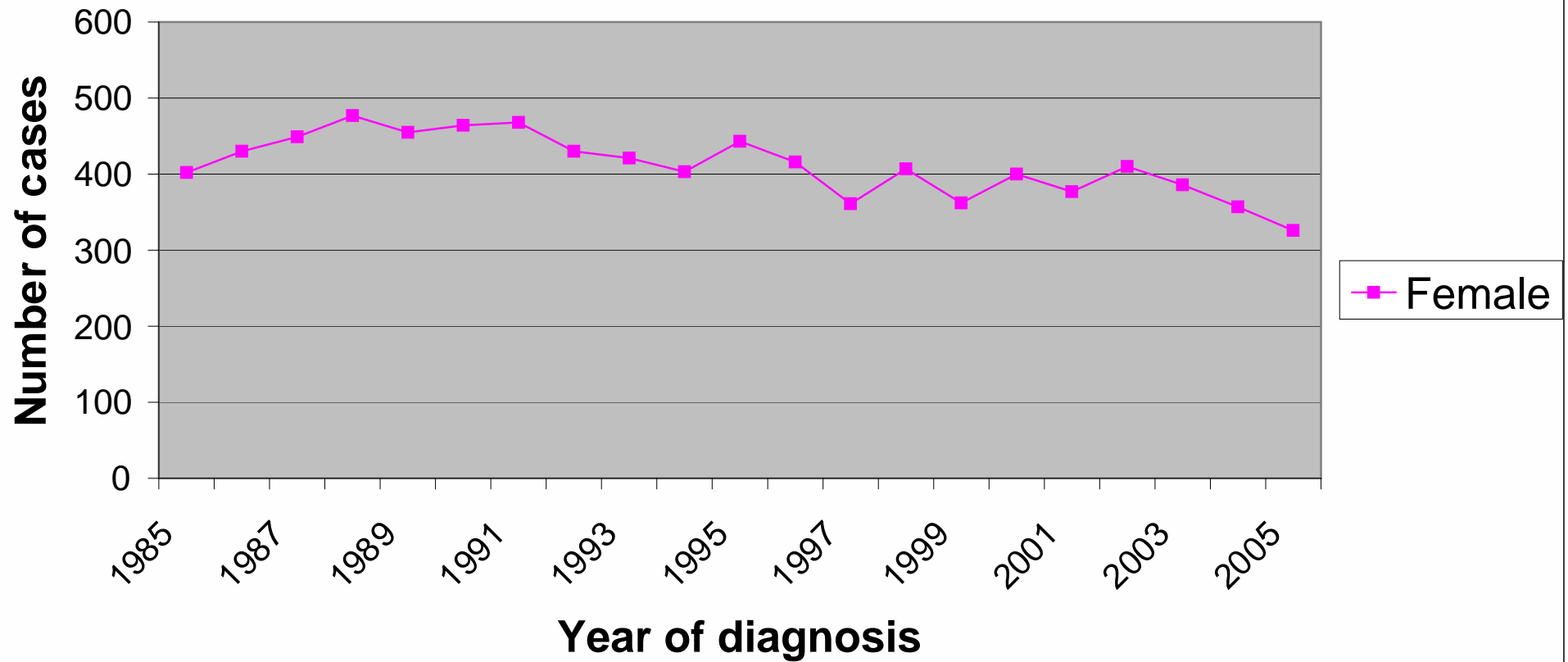
## Mortality from breast cancer in Norfolk, Suffolk and Cambridgeshire: Number of cases



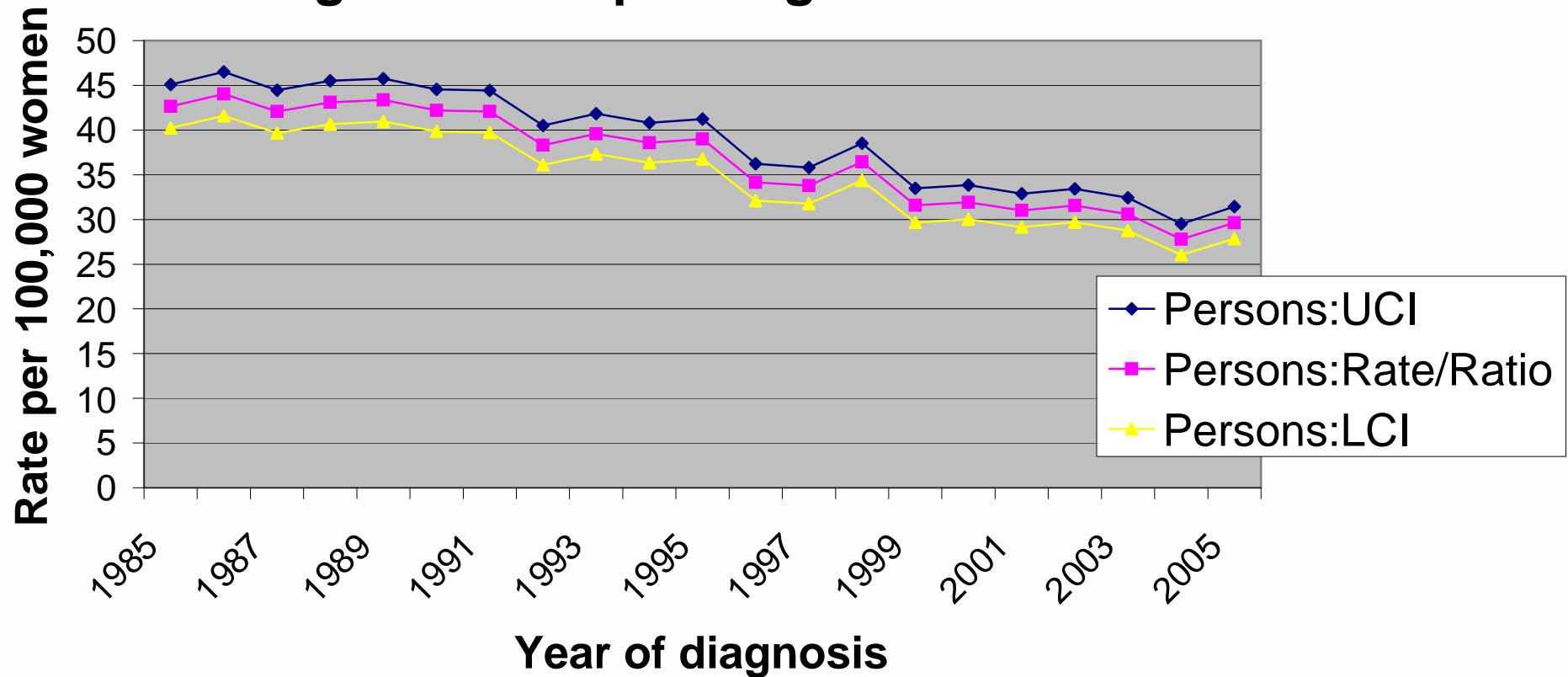
## Mortality from breast cancer in Bedfordshire and Hertfordshire: Number of cases



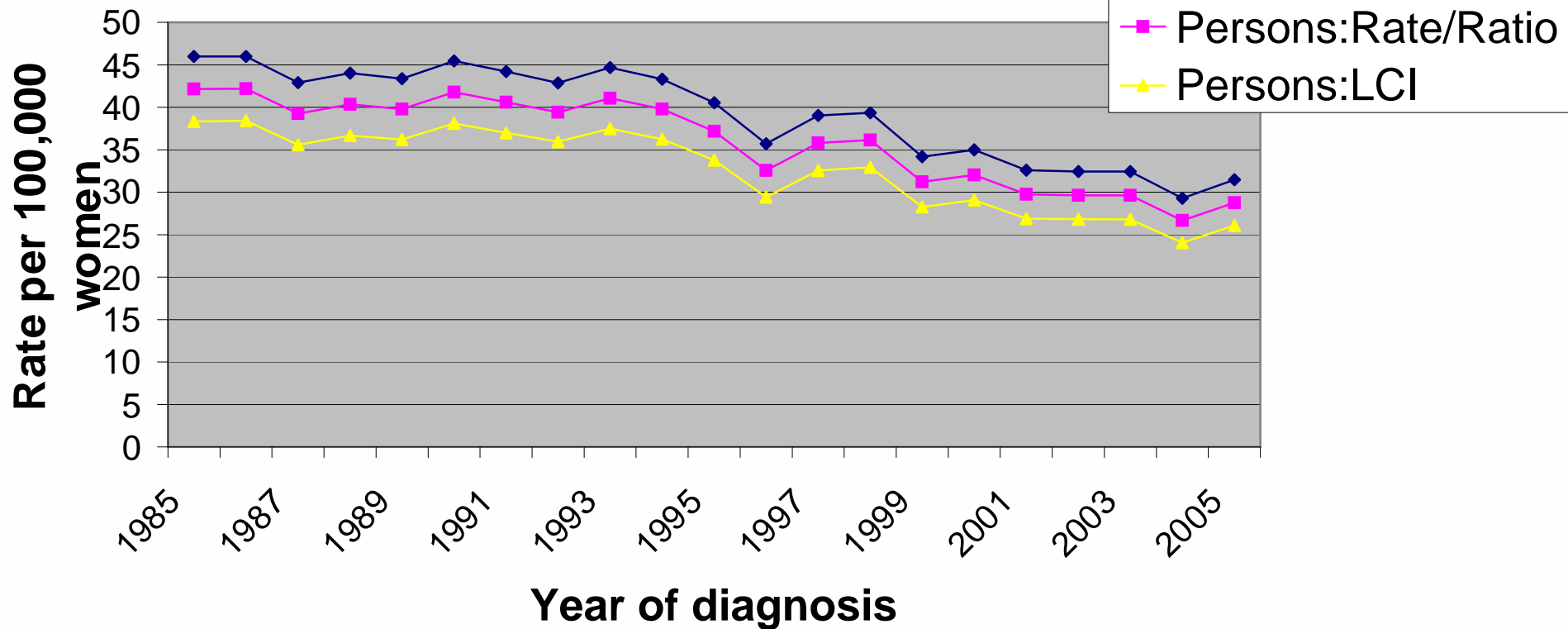
## Mortality from breast cancer in Essex: Number of cases



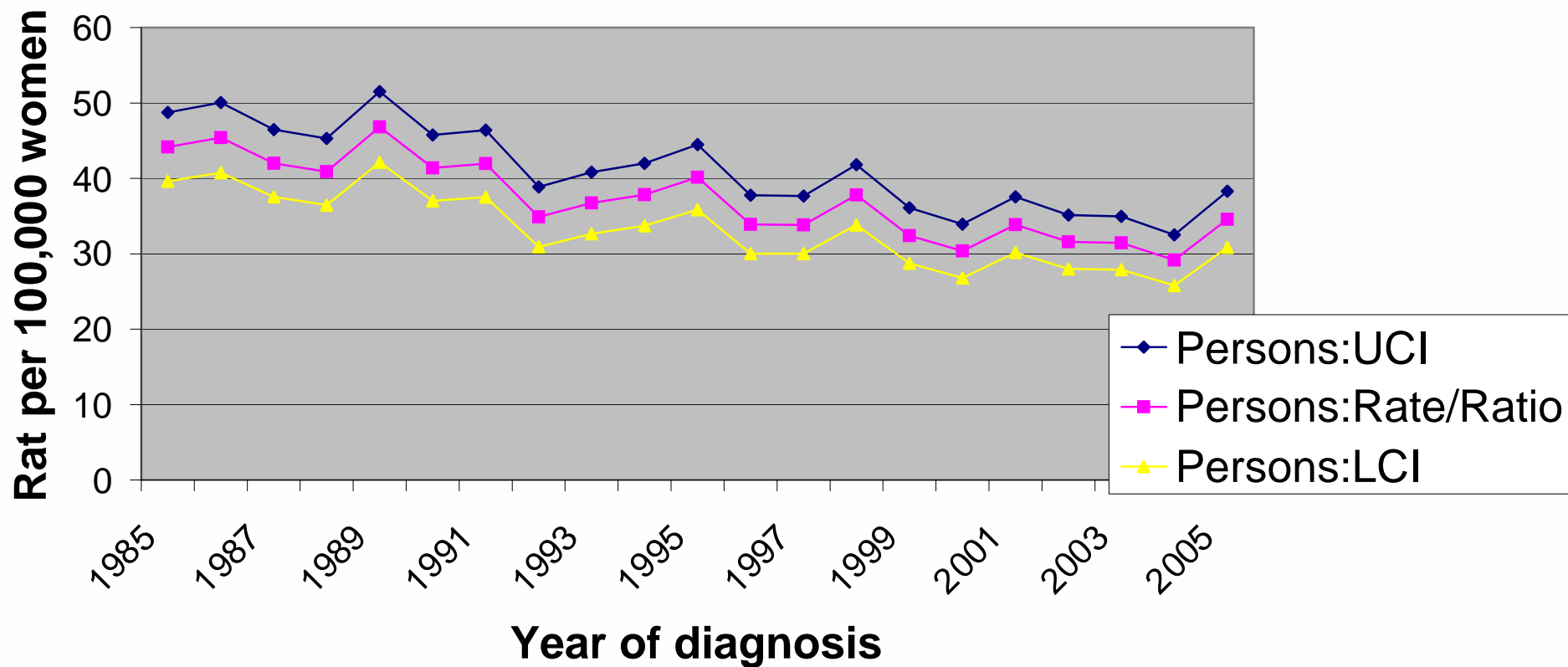
## Mortality from breast cancer in the East of England: European age standardised rates



# Mortality from breast cancer in Norfolk, Suffolk and Cambridgeshire: European age standardised rates



## Mortality from breast cancer in Bedfordshire and Hertfordshire: European age standardised rates



## Mortality from breast cancer in Essex: European age standardised rates

