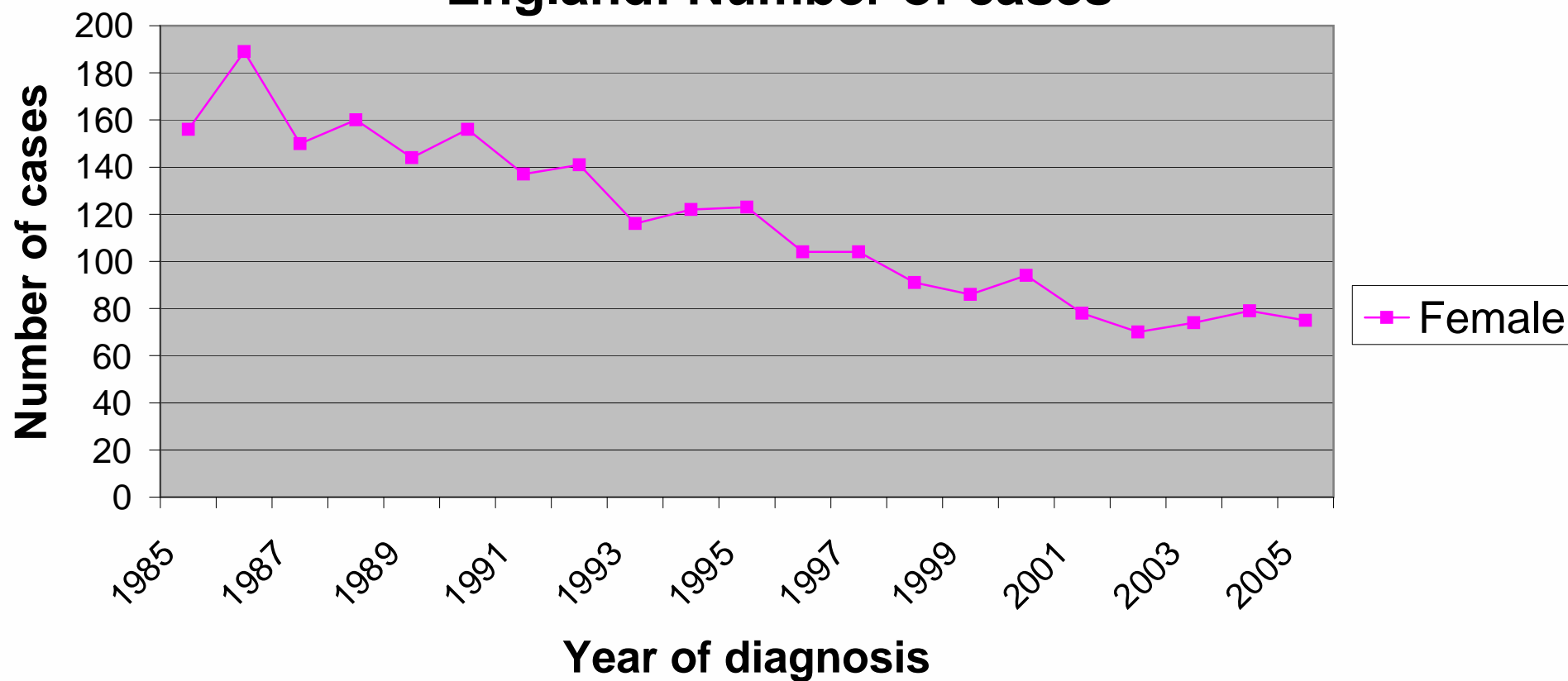
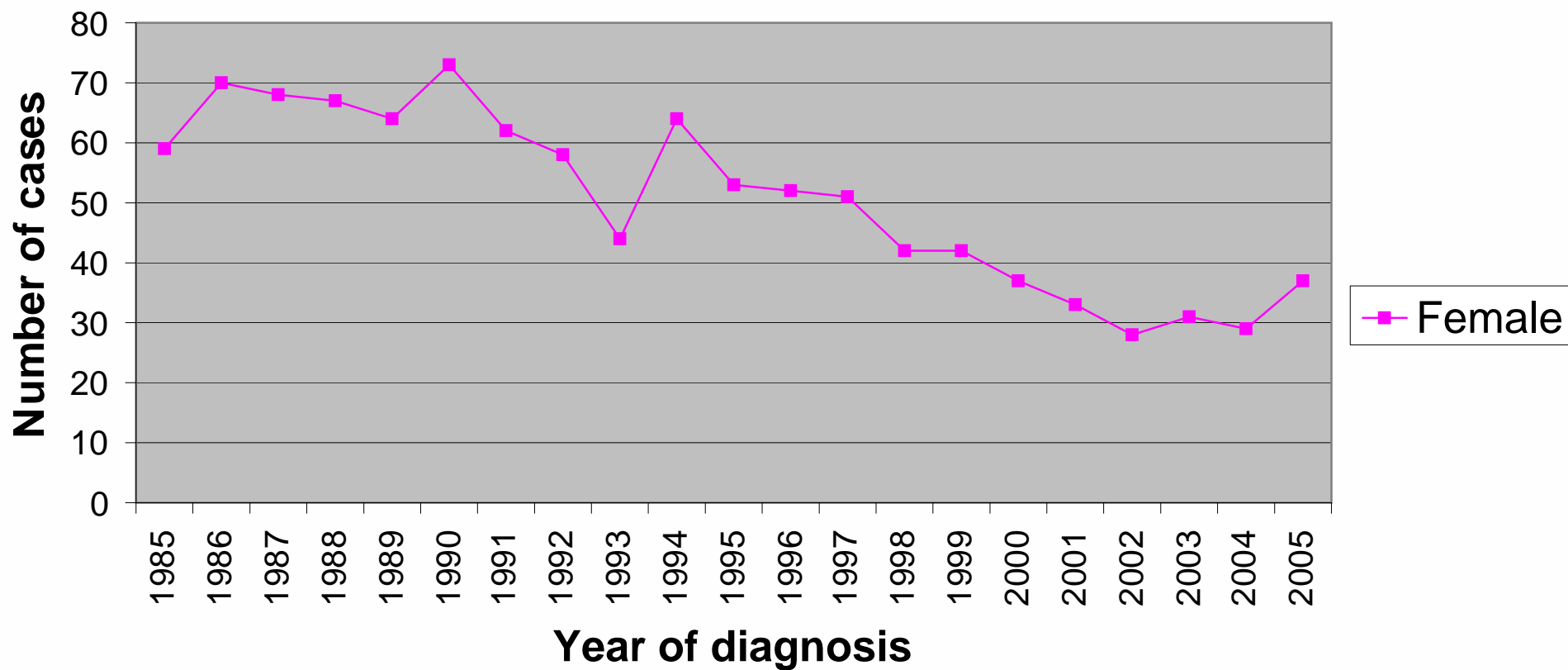


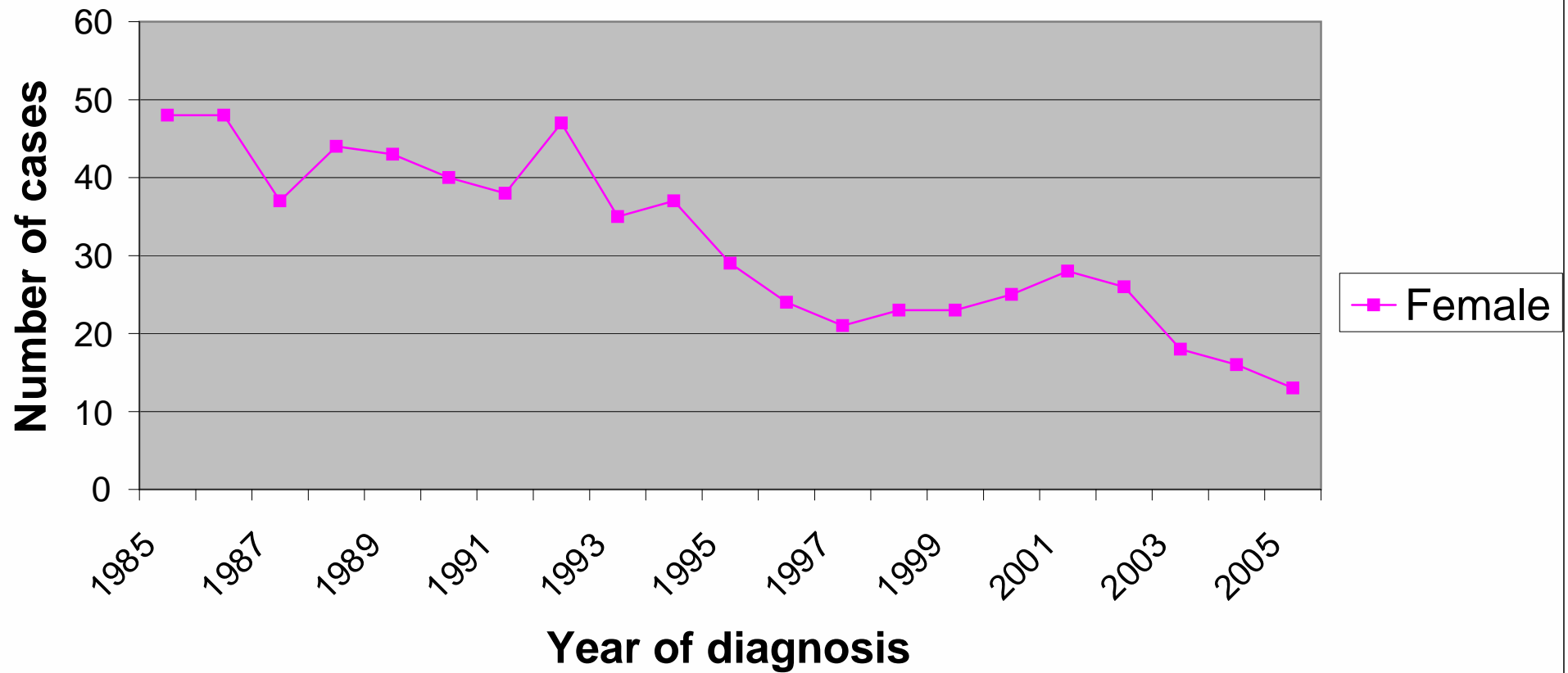
Mortality from cervical cancer in the East of England: Number of cases



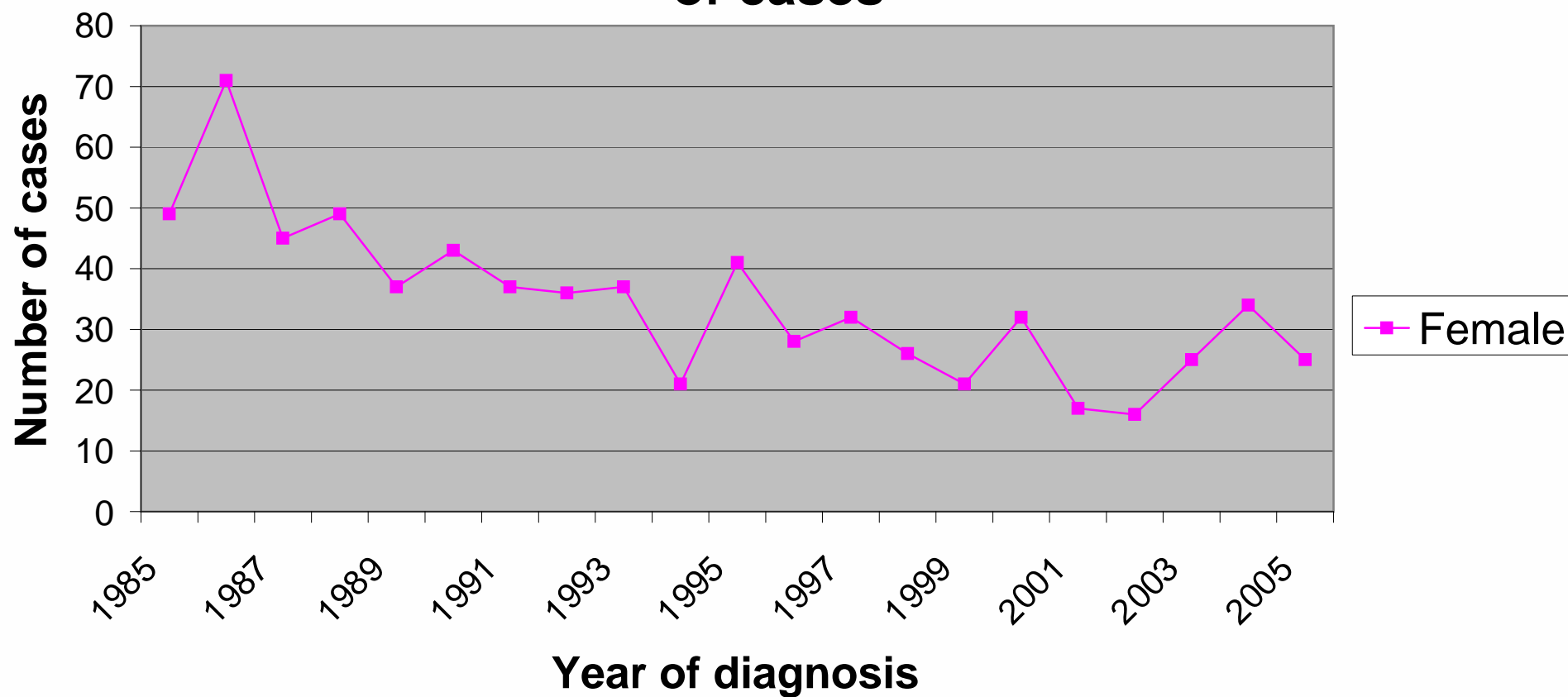
Mortality from cervical cancer in Norfolk, Suffolk and Cambridgeshire: Number of cases



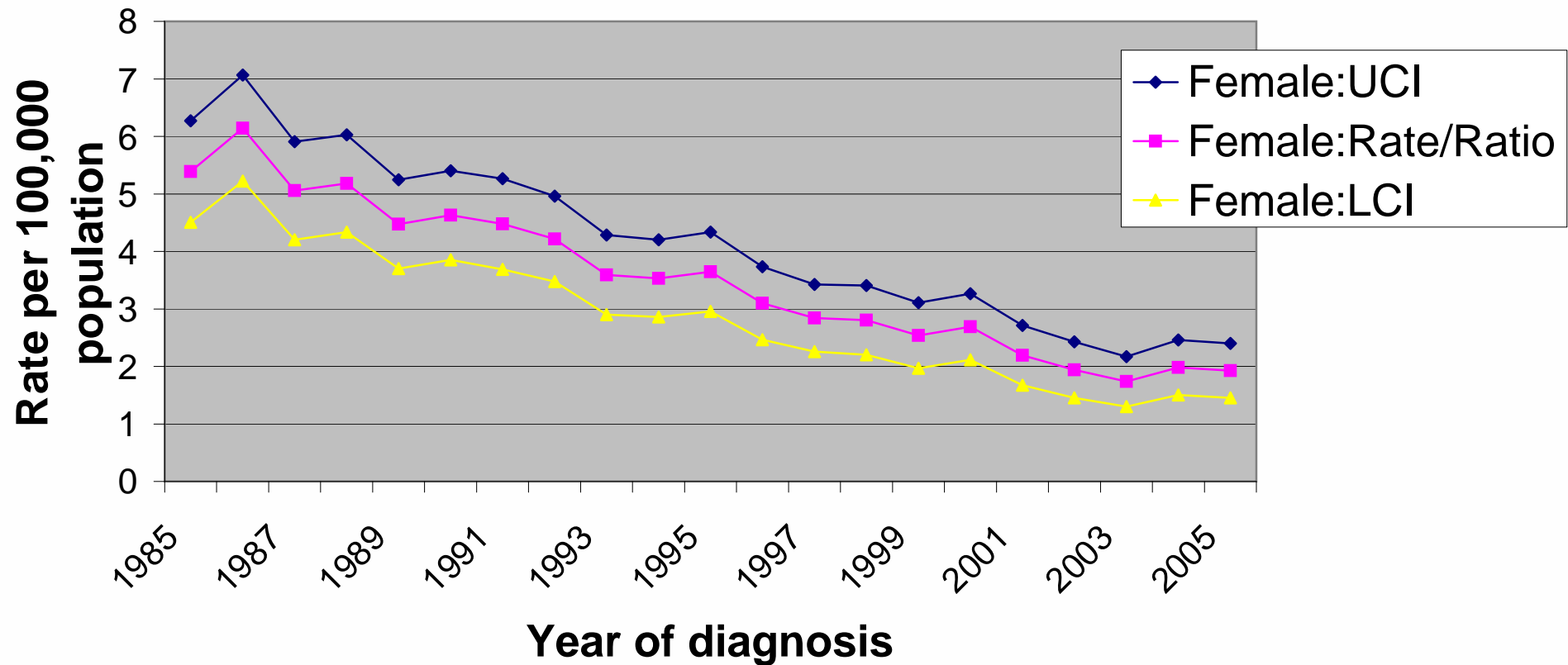
Mortality from cervical cancer in Bedfordshire and Hertfordshire: Number of cases



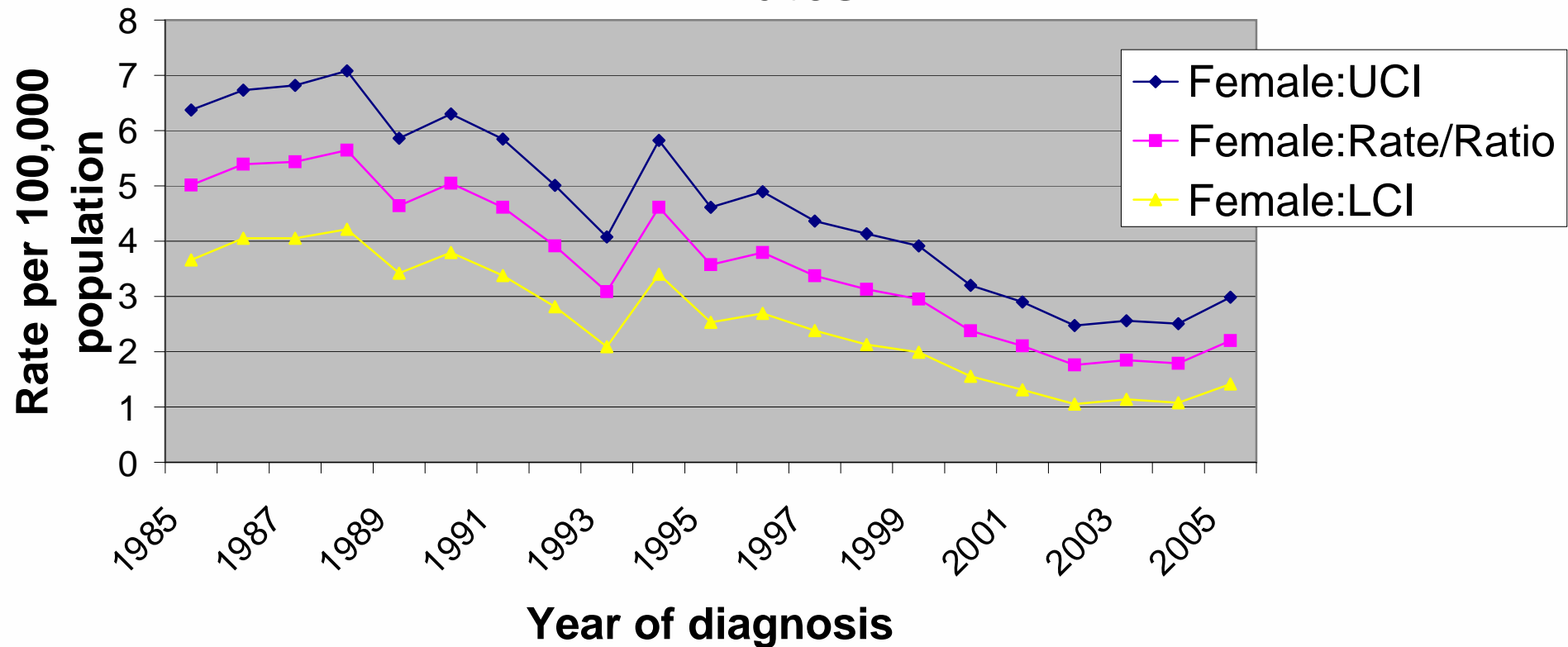
Mortality from cervical cancer in Essex: Number of cases



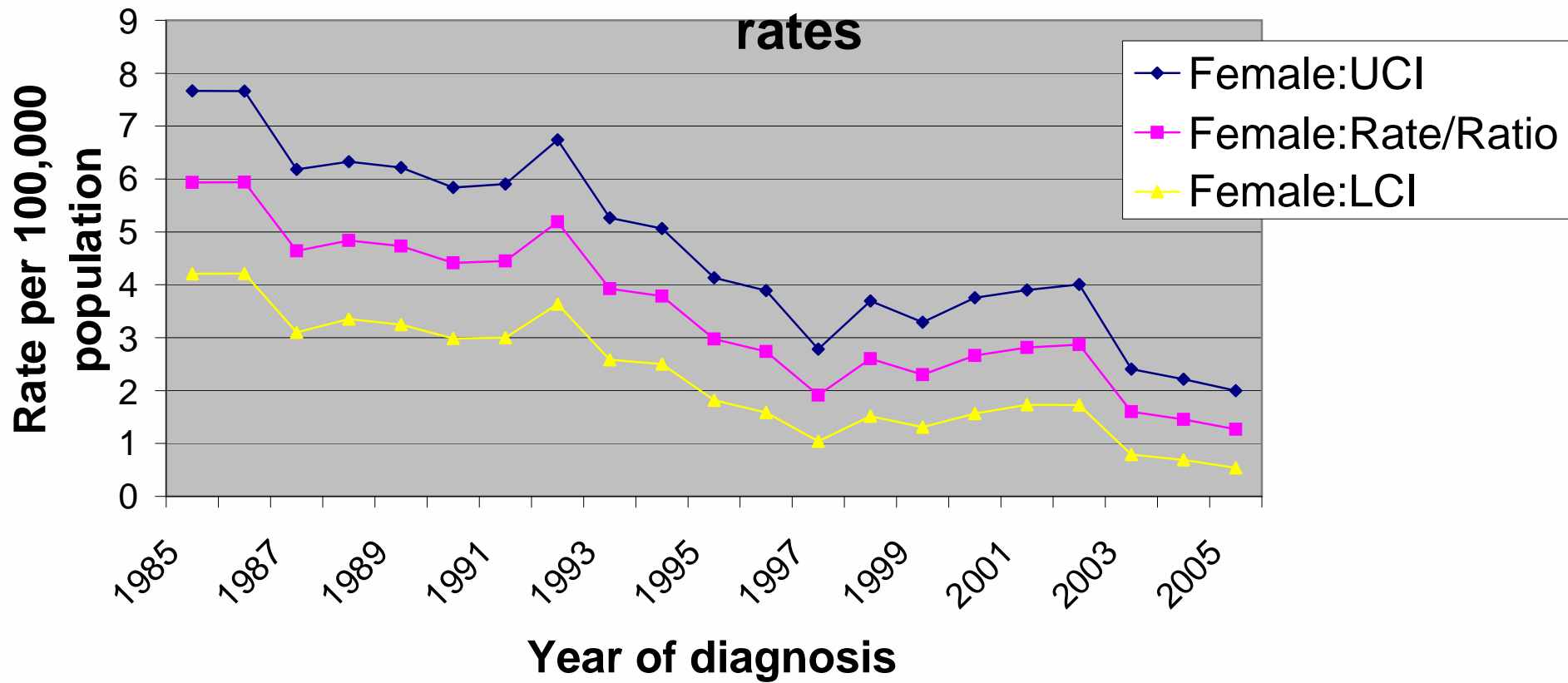
Mortality from cervical cancer in the East of England: European age standardised rates



Mortality from cervical cancer in Norfolk, Suffolk and Cambridgeshire: European age standardised rates



Mortality from cervical cancer in Bedfordshire and Hertfordshire: European age standardised rates



Mortality from cervical cancer in Essex: European age standardised rates

