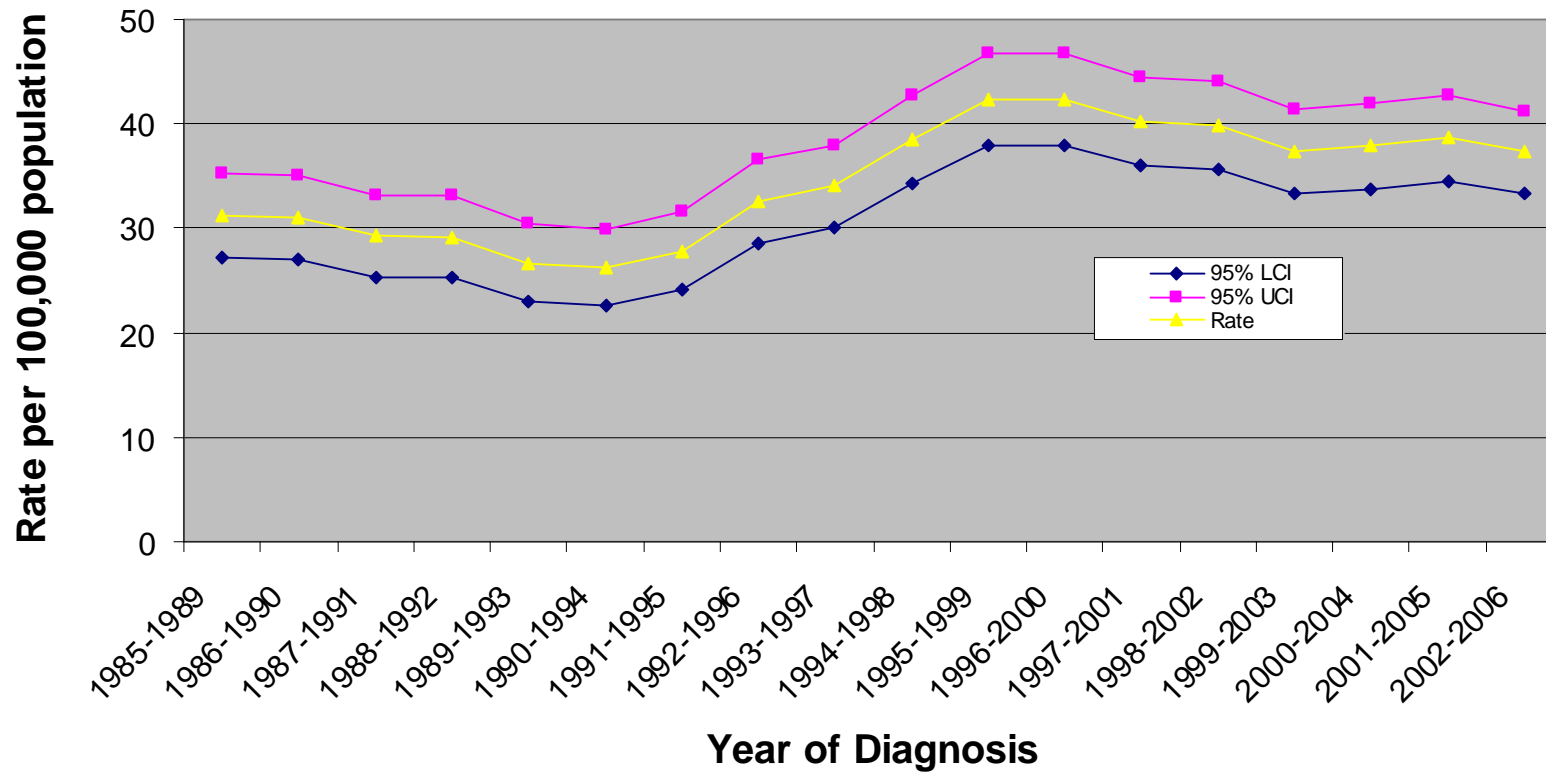
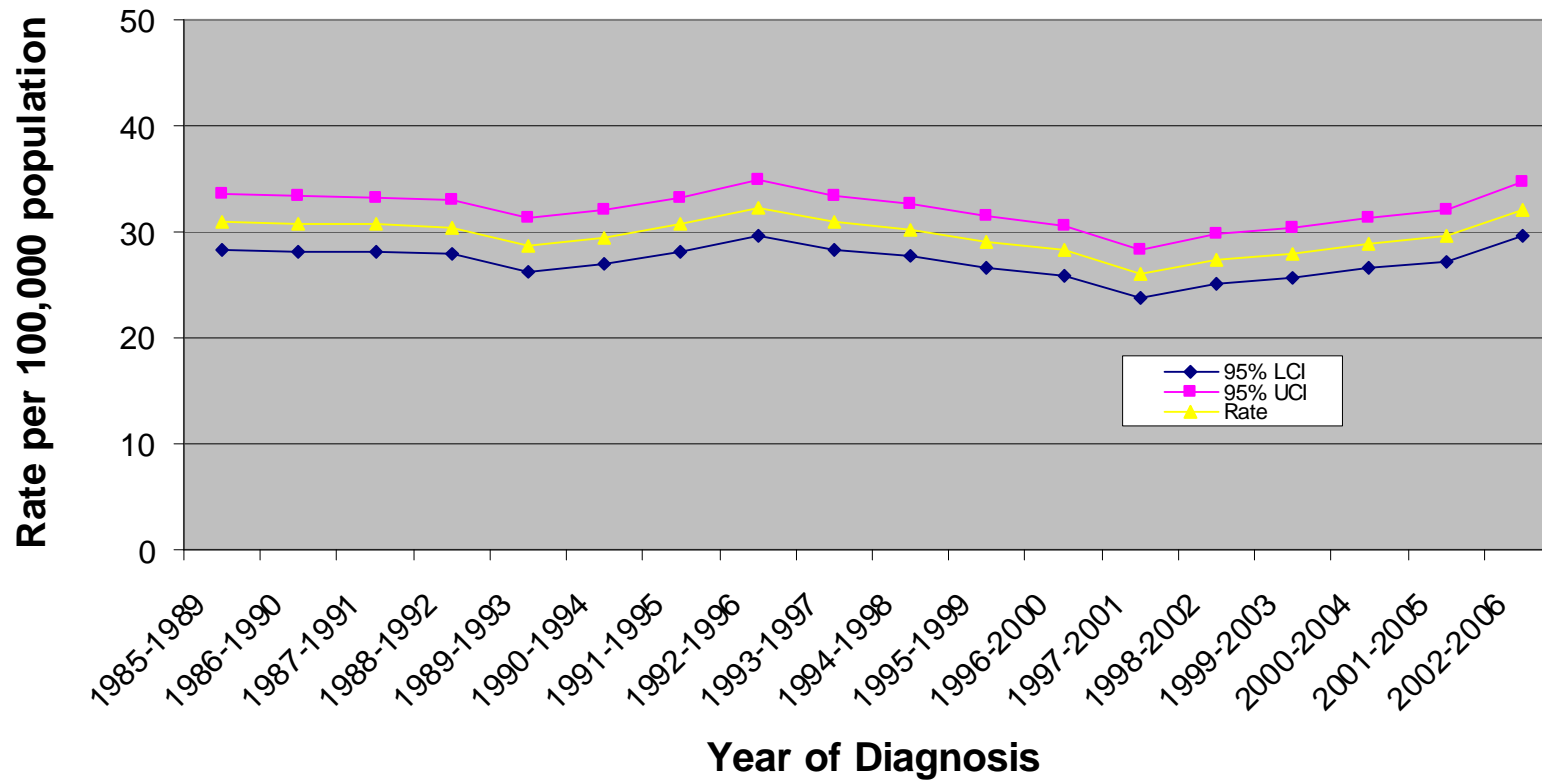


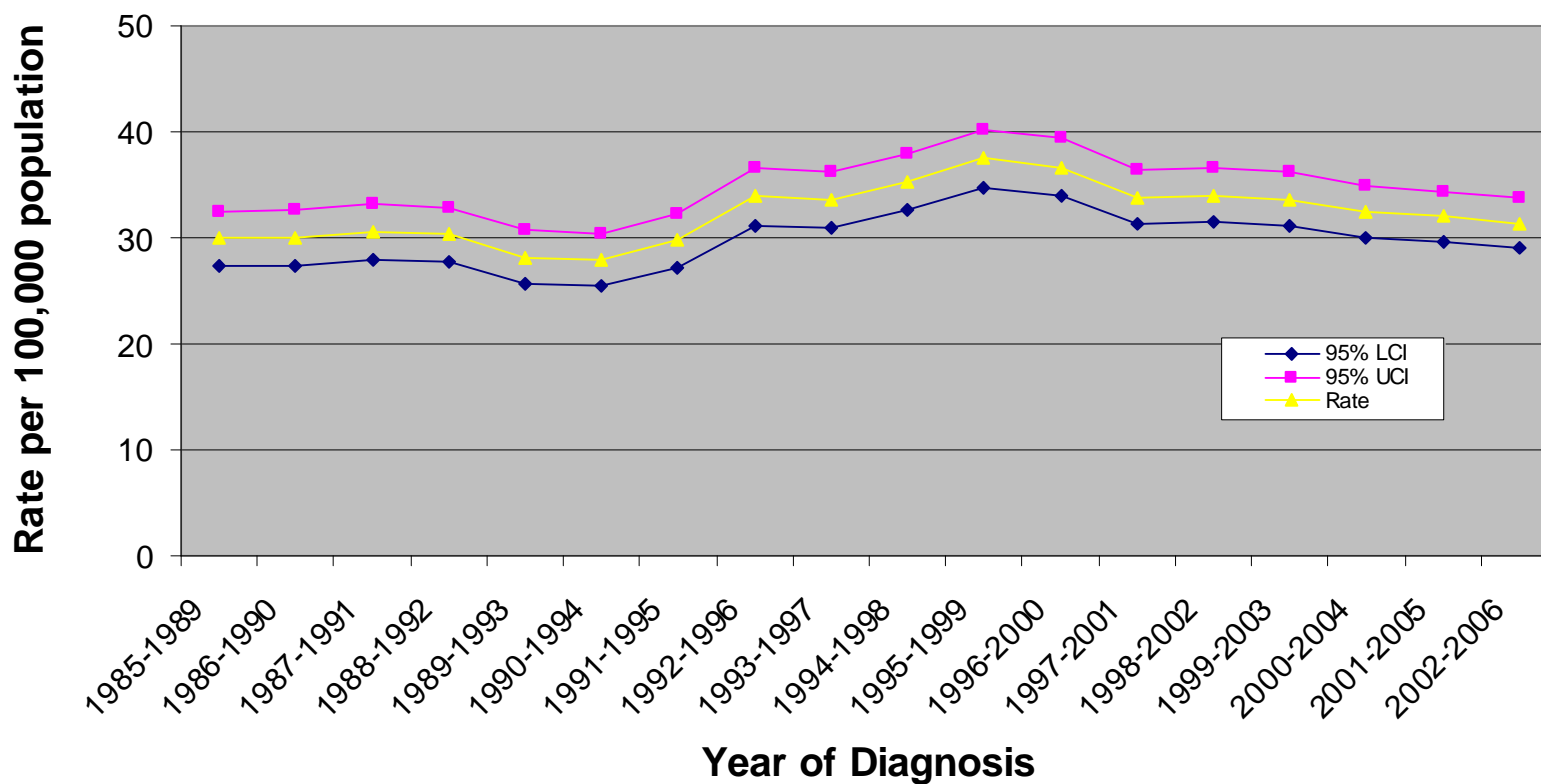
Incidence of Malignant neoplasms of Lymphoid, Haematopoietic and related tissue (ICD10:C81-C96) in Luton PCT : European Age Standardised Rates and 95% Confidence Intervals



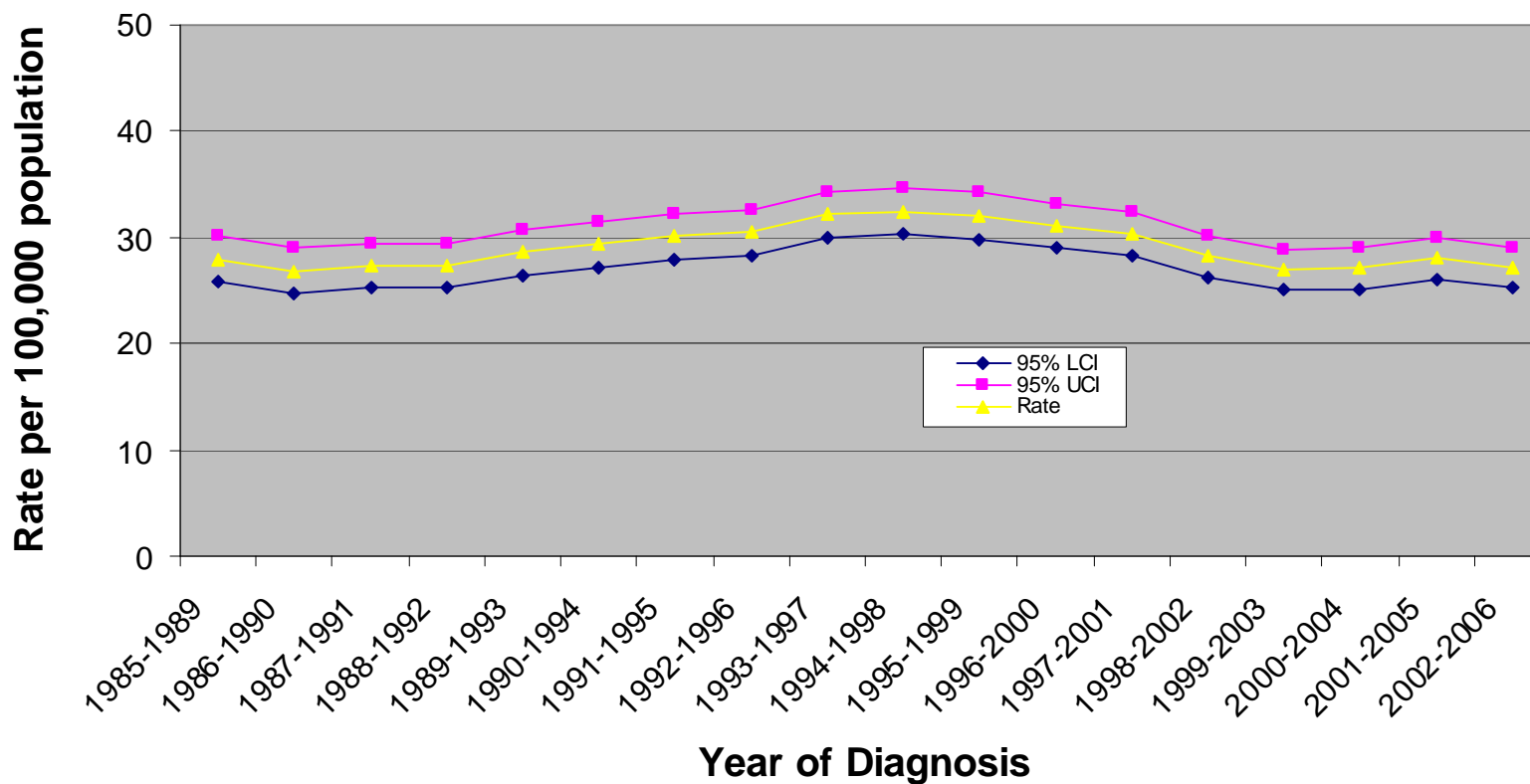
Incidence of Malignant neoplasms of Lymphoid, Haematopoietic and related tissue (ICD10:C81-C96) in South East Essex PCT : European Age Standardised Rates and 95% Confidence Intervals



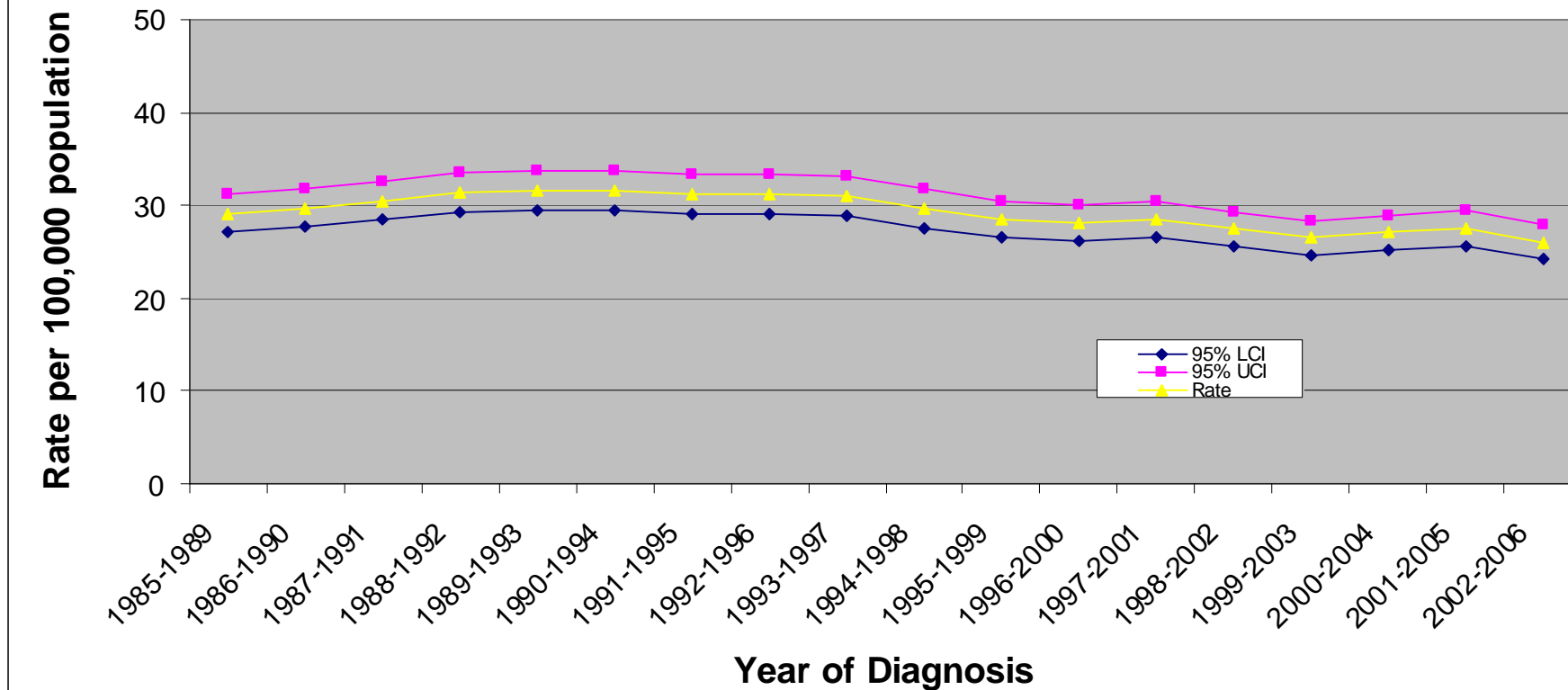
Incidence of Malignant neoplasms of Lymphoid, Haematopoietic and related tissue (ICD10:C81-C96) in Bedfordshire PCT : European Age Standardised Rates and 95% Confidence Intervals



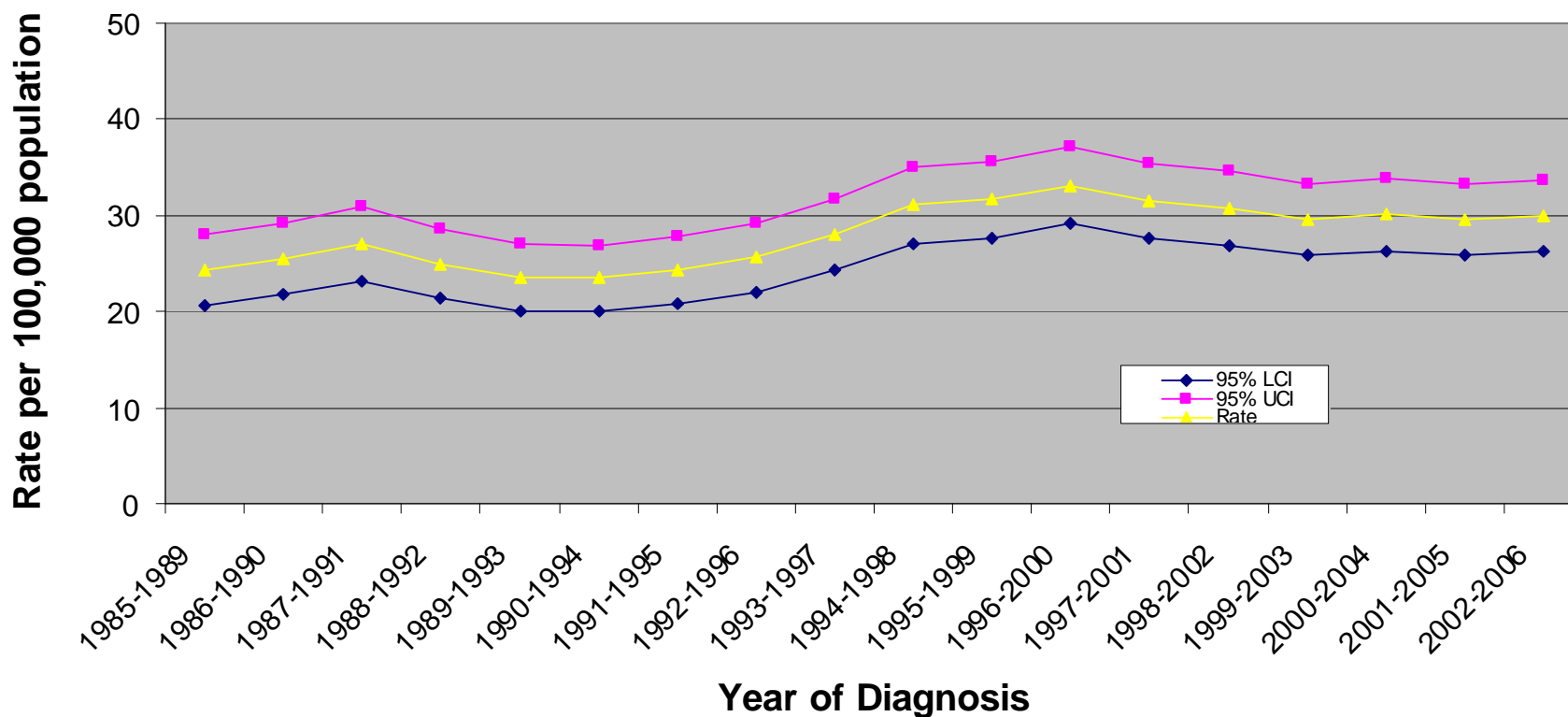
**Incidence of Malignant neoplasms of Lymphoid, Haematopoietic and related tissue (ICD10:C81-C96) in East and North Hertfordshire PCT :
European Age Standardised Rates and 95% Confidence Intervals**



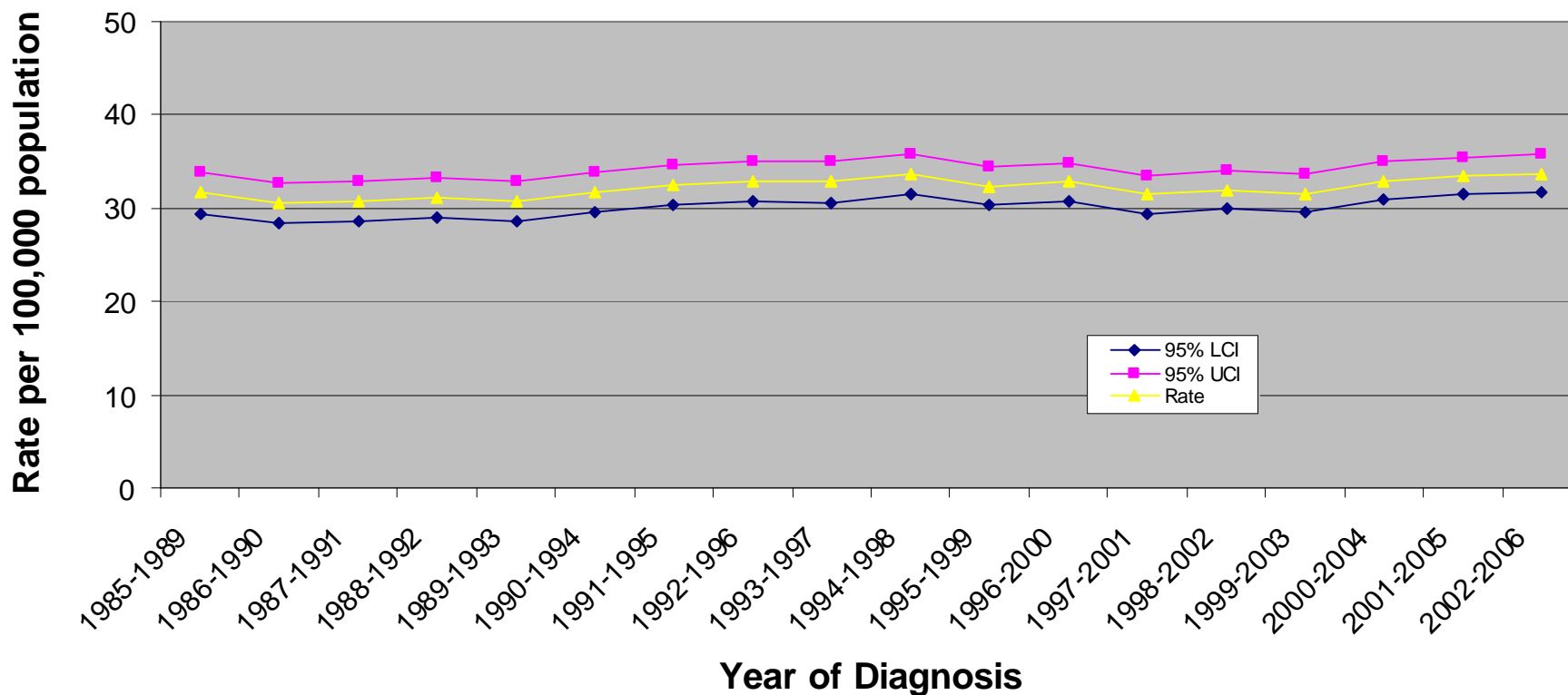
Incidence of Malignant neoplasms of Lymphoid, Haematopoietic and related tissue (ICD10:C81-C96) in West Hertfordshire PCT : European Age Standardised Rates and 95% Confidence Intervals

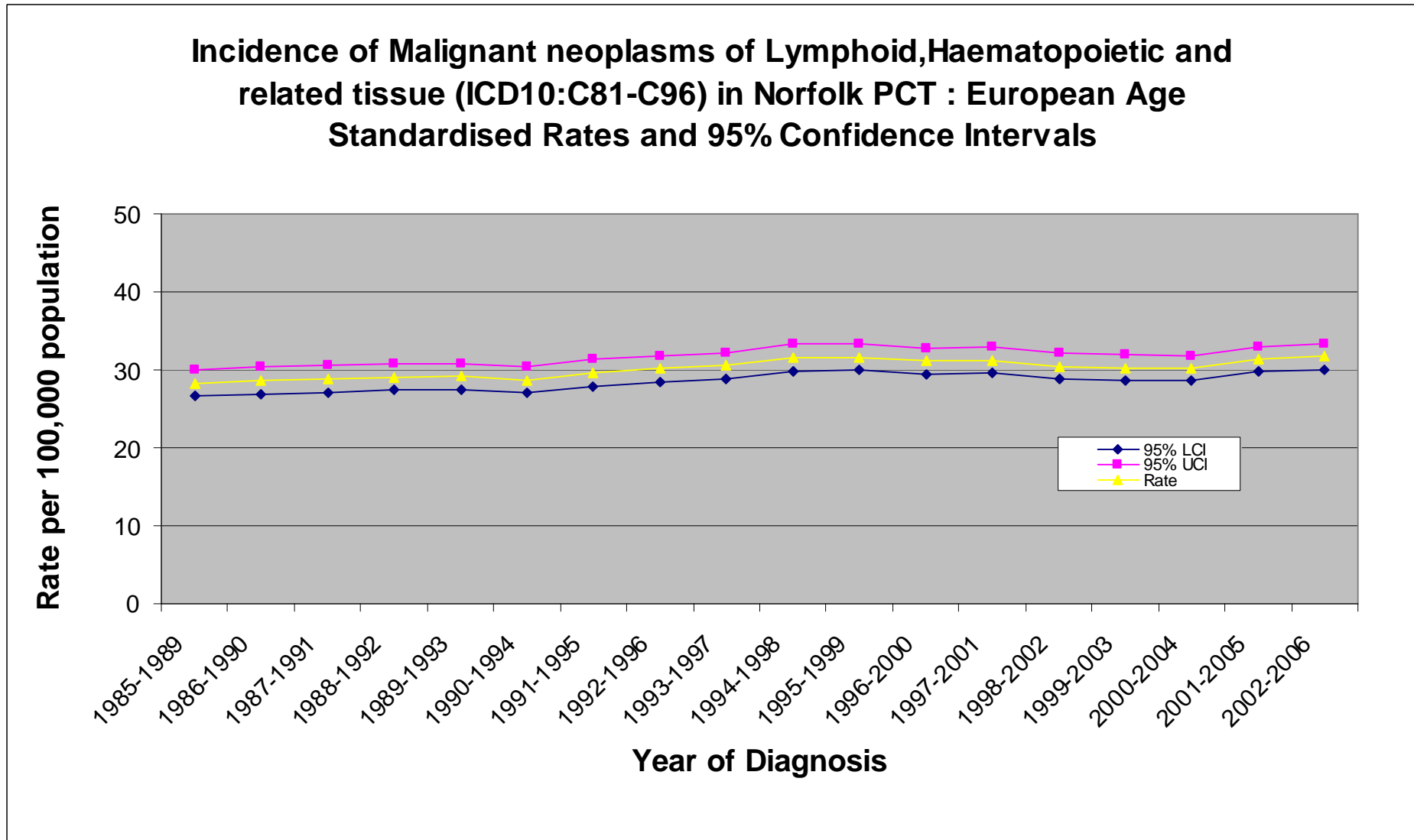


Incidence of Malignant neoplasms of Lymphoid, Haematopoietic and related tissue (ICD10:C81-C96) in Peterborough PCT : European Age Standardised Rates and 95% Confidence Intervals

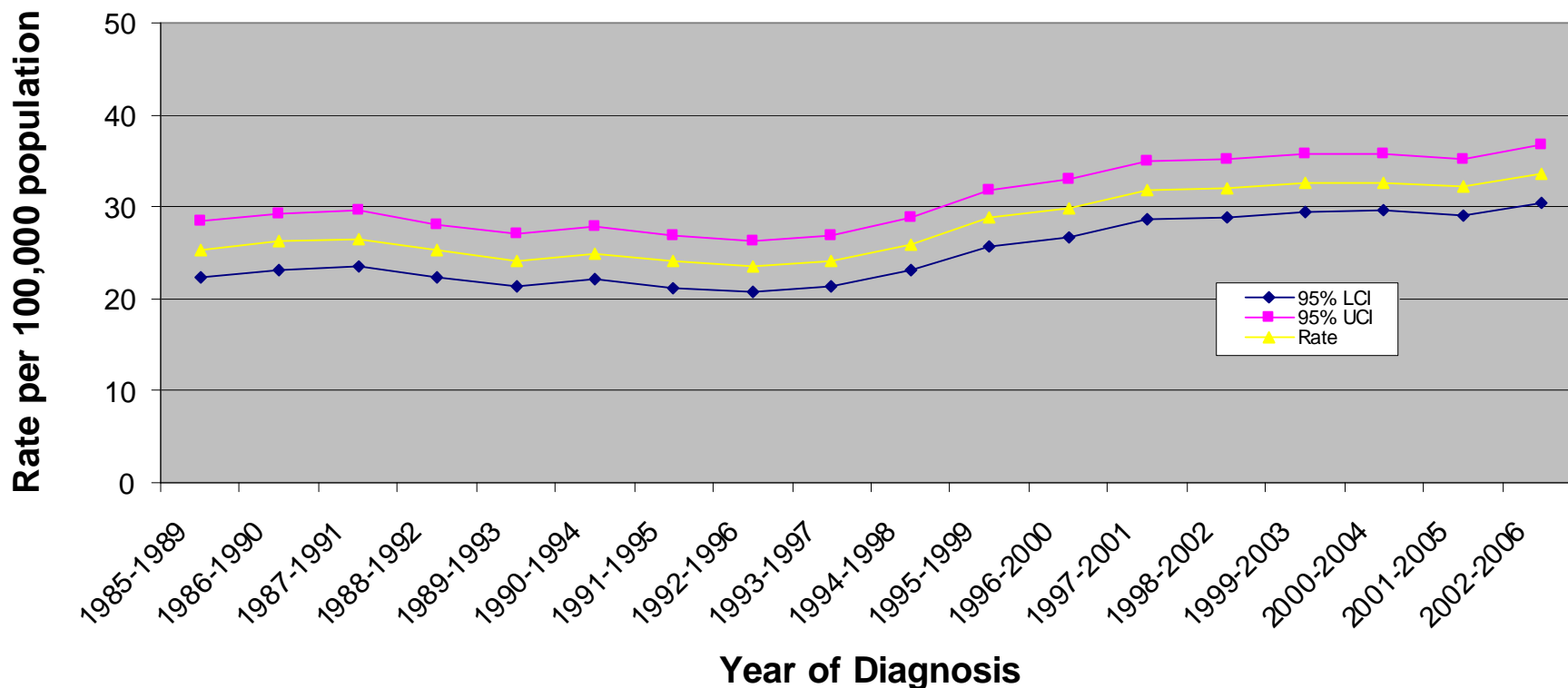


Incidence of Malignant neoplasms of Lymphoid, Haematopoietic and related tissue (ICD10:C81-C96) in Cambridgeshire PCT : European Age Standardised Rates and 95% Confidence Intervals

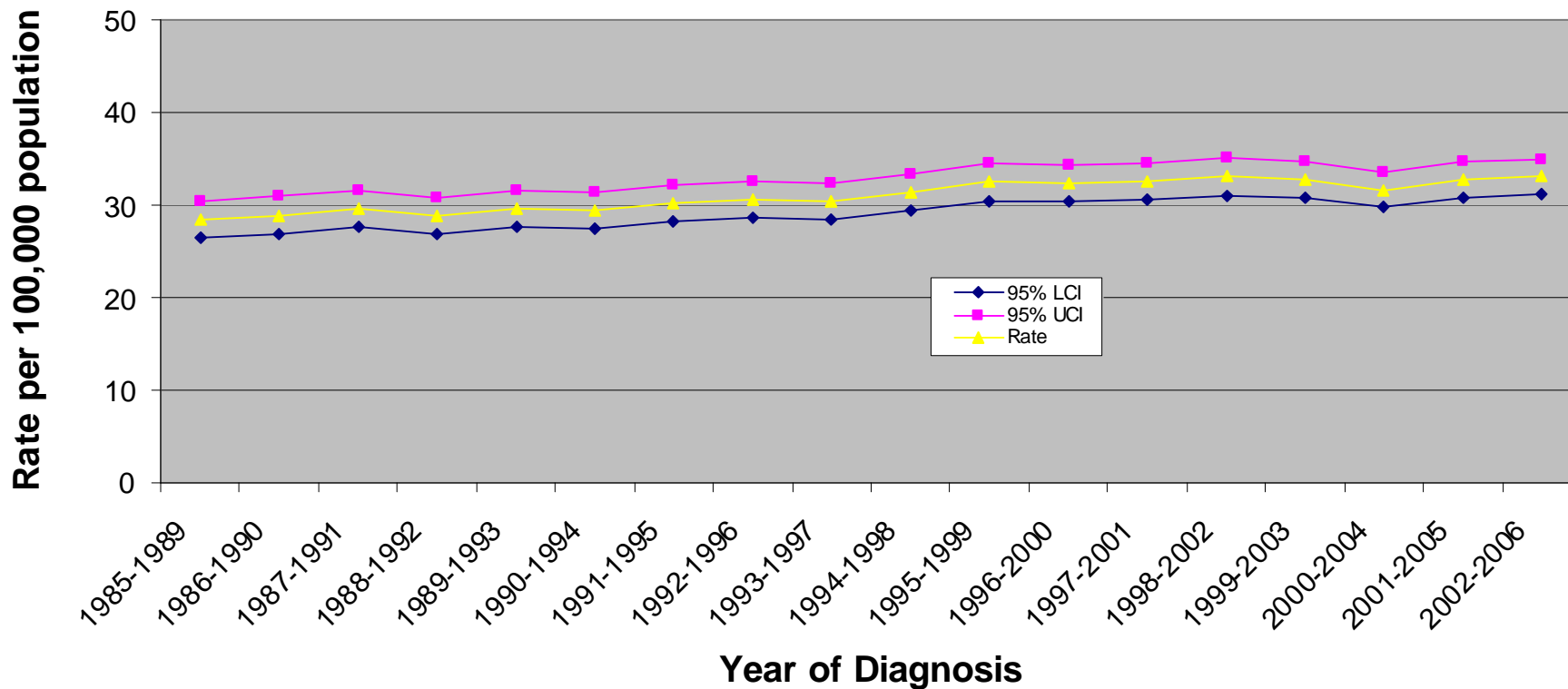




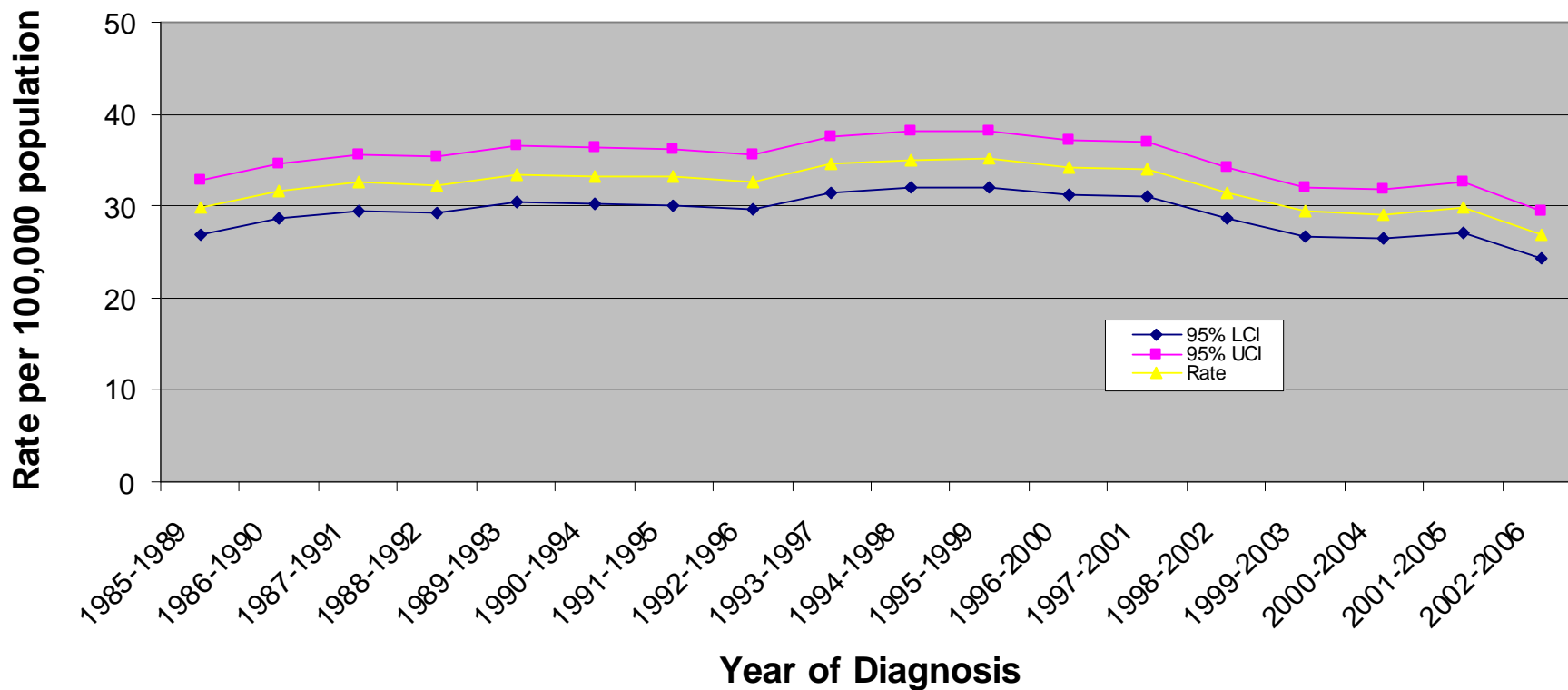
Incidence of Malignant neoplasms of Lymphoid, Haematopoietic and related tissue (ICD10:C81-C96) in Great Yarmouth and Waveney PCT : European Age Standardised Rates and 95% Confidence Intervals



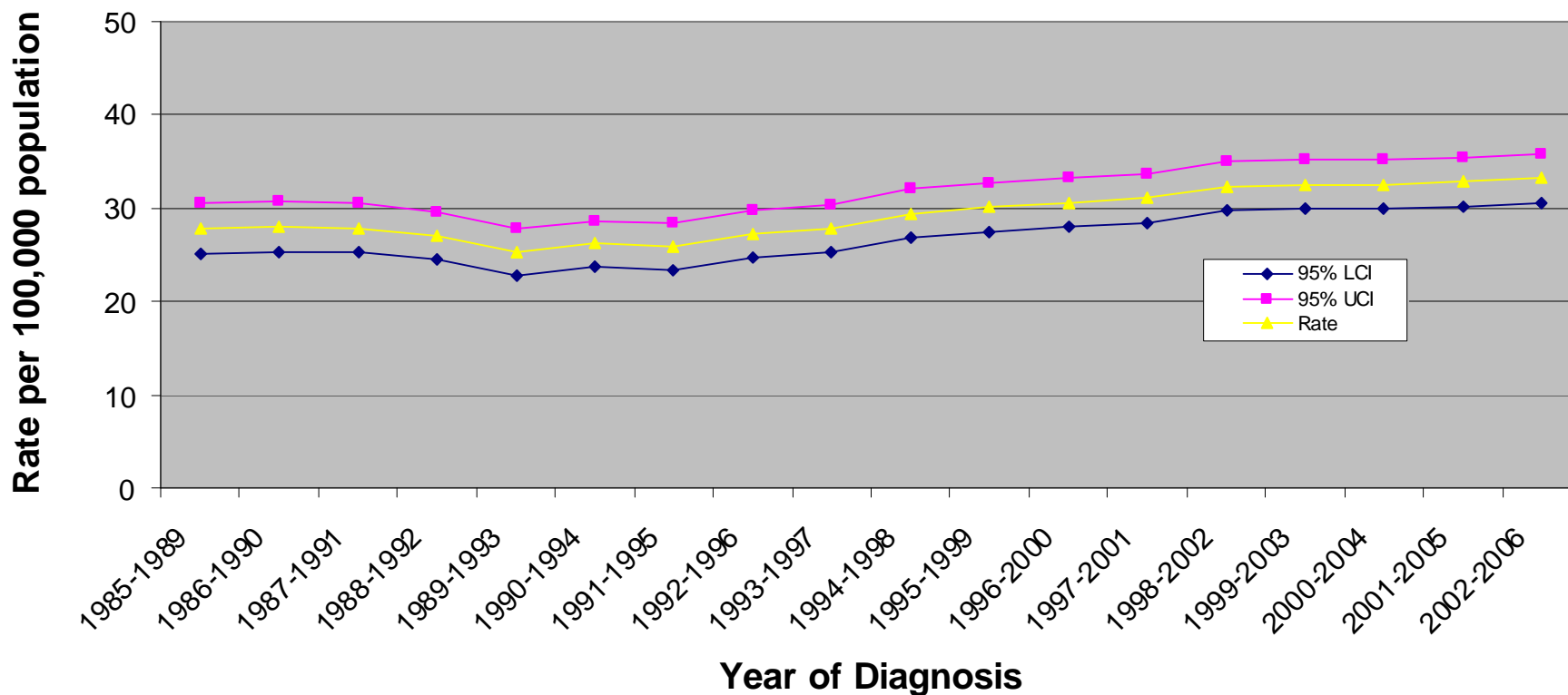
Incidence of Malignant neoplasms of Lymphoid, Haematopoietic and related tissue (ICD10:C81-C96) in Suffolk PCT : European Age Standardised Rates and 95% Confidence Intervals



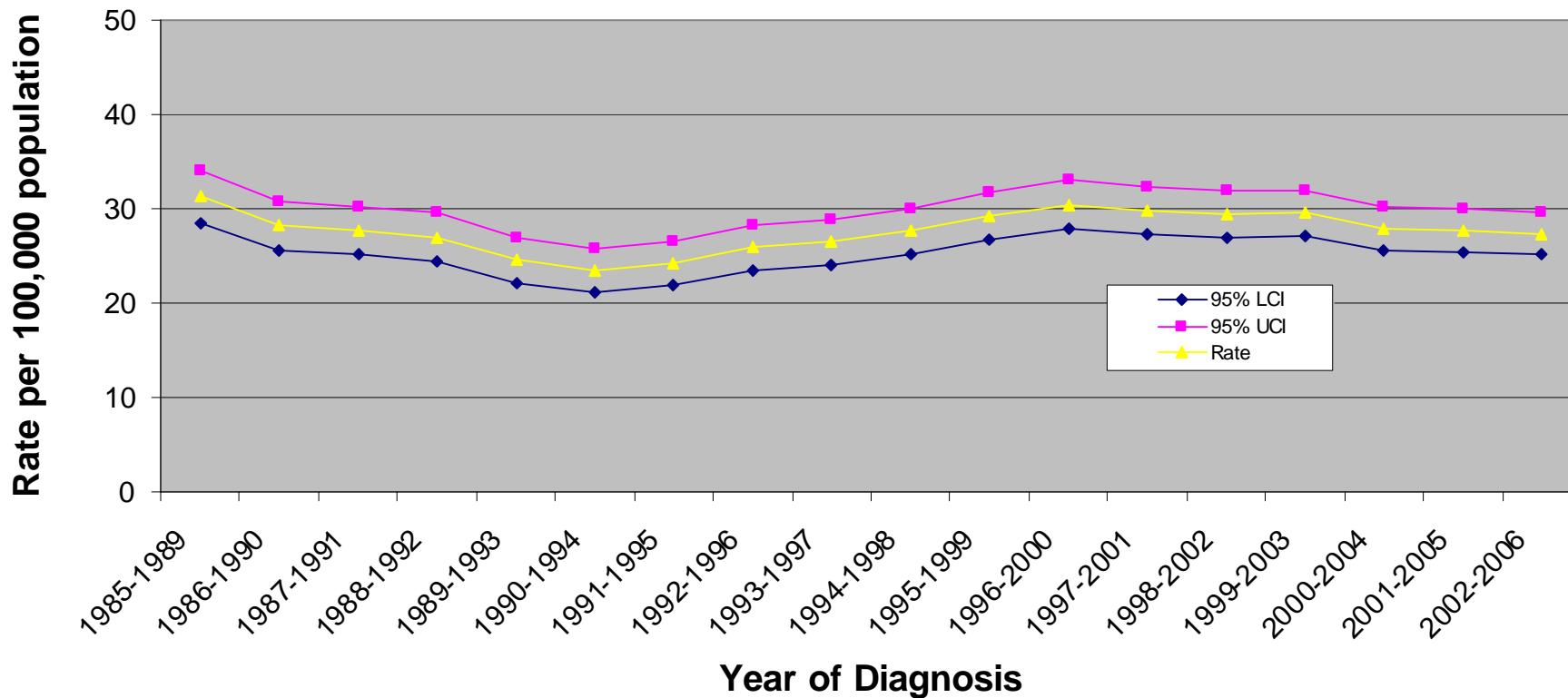
Incidence of Malignant neoplasms of Lymphoid, Haematopoietic and related tissue (ICD10:C81-C96) in West Essex PCT : European Age Standardised Rates and 95% Confidence Intervals



Incidence of Malignant neoplasms of Lymphoid, Haematopoietic and related tissue (ICD10:C81-C96) in North East Essex PCT : European Age Standardised Rates and 95% Confidence Intervals



Incidence of Malignant neoplasms of Lymphoid, Haematopoietic and related tissue (ICD10:C81-C96) in Mid Essex PCT : European Age Standardised Rates and 95% Confidence Intervals



Incidence of Malignant neoplasms of Lymphoid, Haematopoietic and related tissue (ICD10:C81-C96) in South West Essex PCT : European Age Standardised Rates and 95% Confidence Intervals

