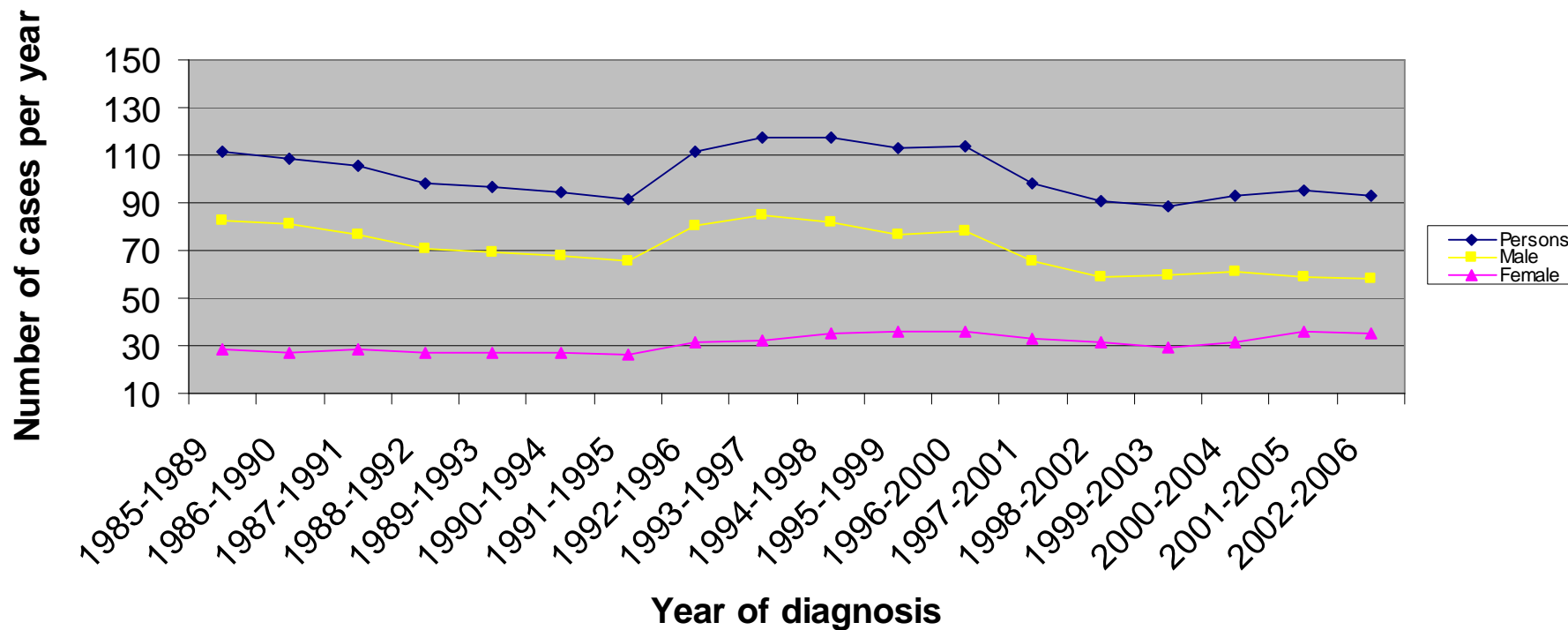
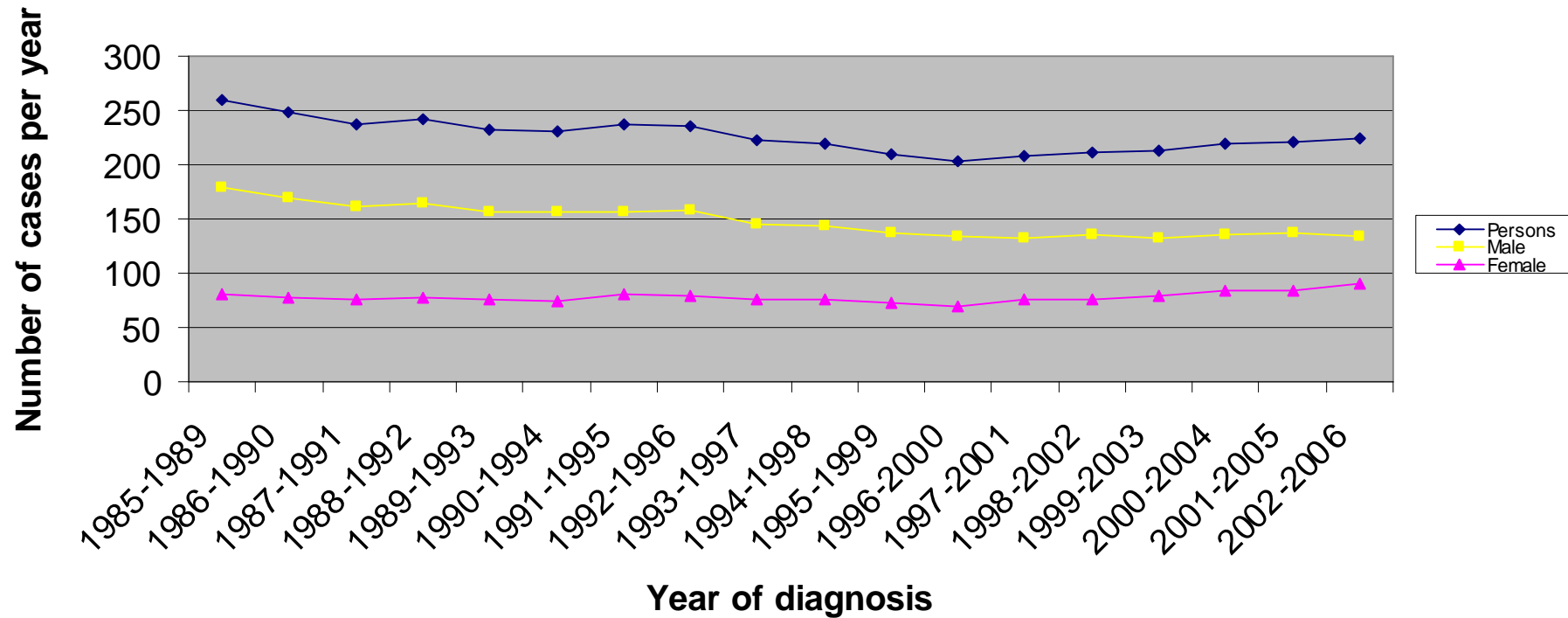


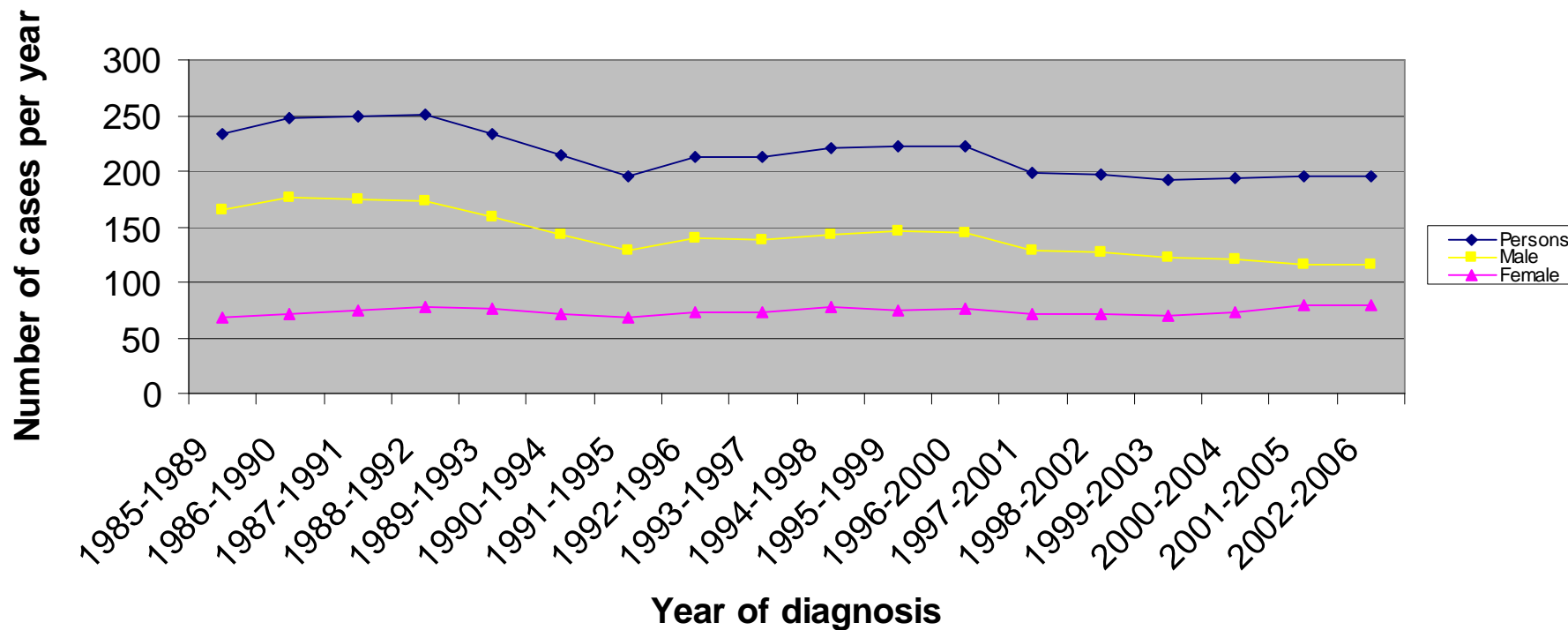
### Incidence of Trachea, Bronchus and Lung cancer (ICD10:C33-C34) in Luton PCT : Number of cases



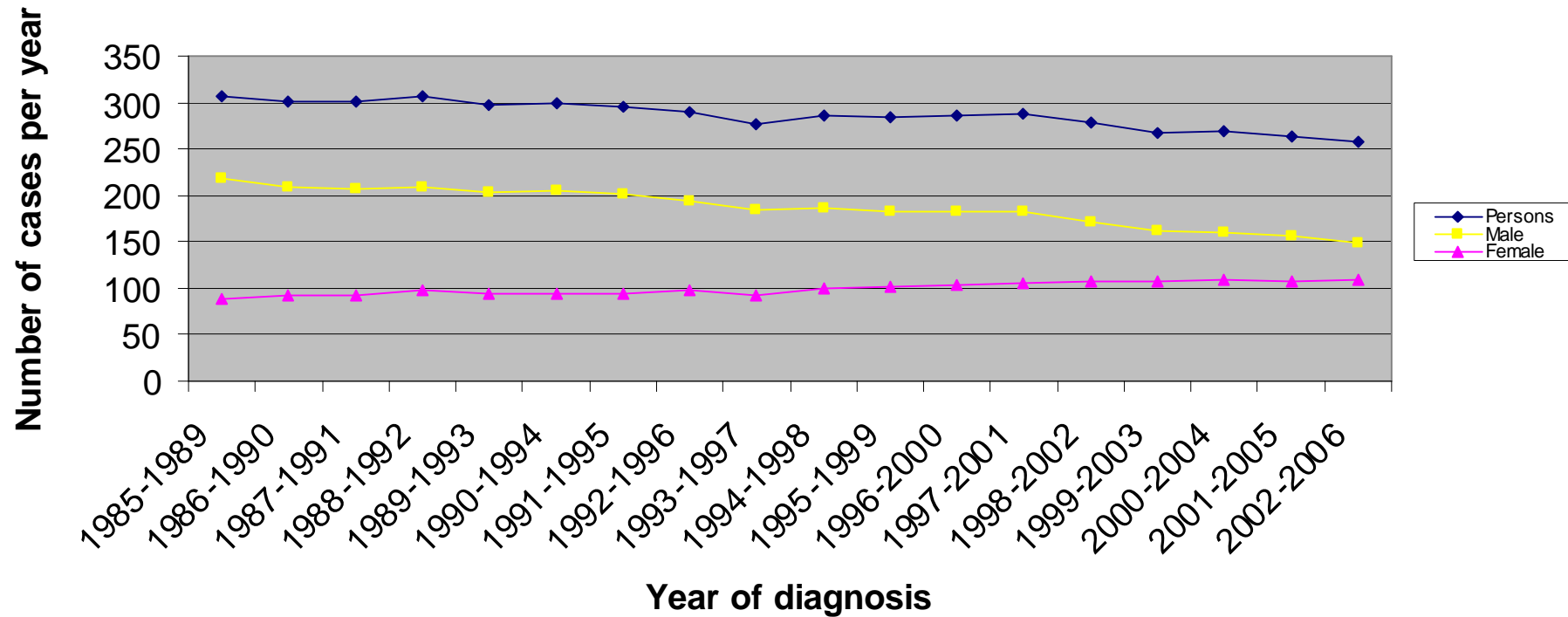
### Incidence of Trachea, Bronchus and Lung cancer (ICD10:C33-C34) in South East Essex PCT : Number of cases



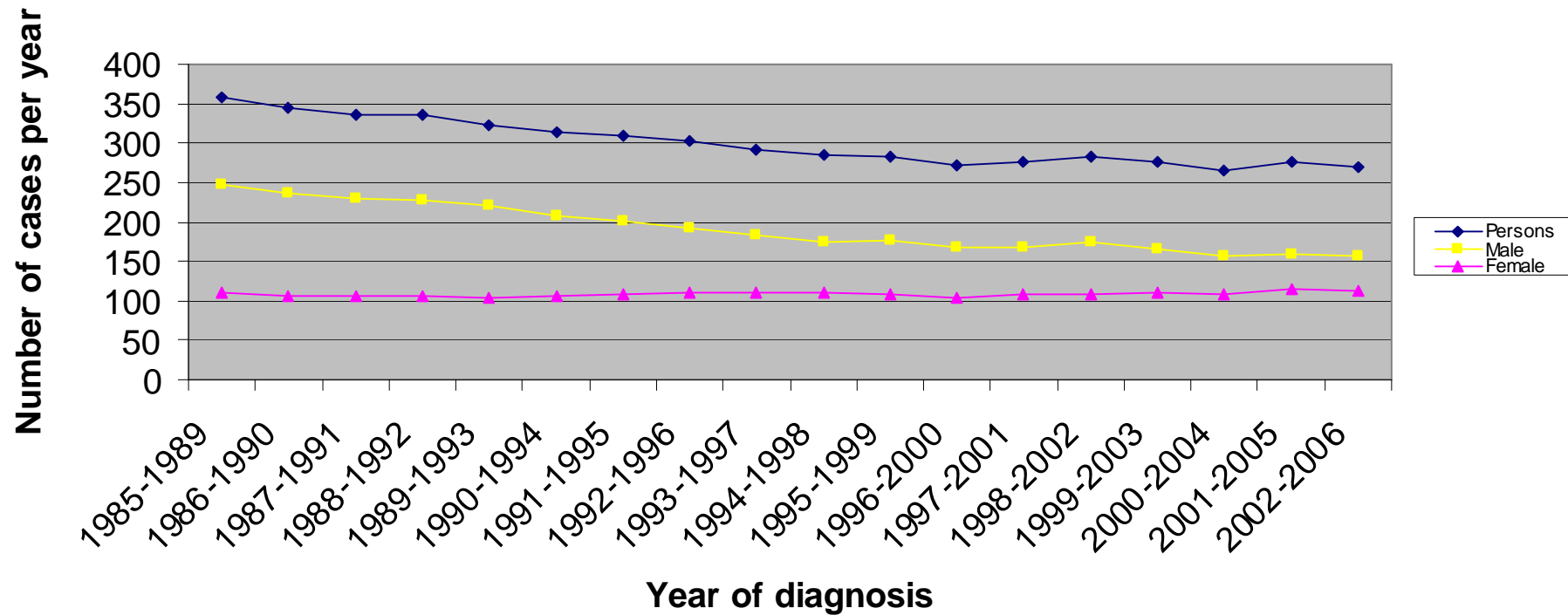
### Incidence of Trachea, Bronchus and Lung cancer (ICD10:C33-C34) in Bedfordshire PCT : Number of cases



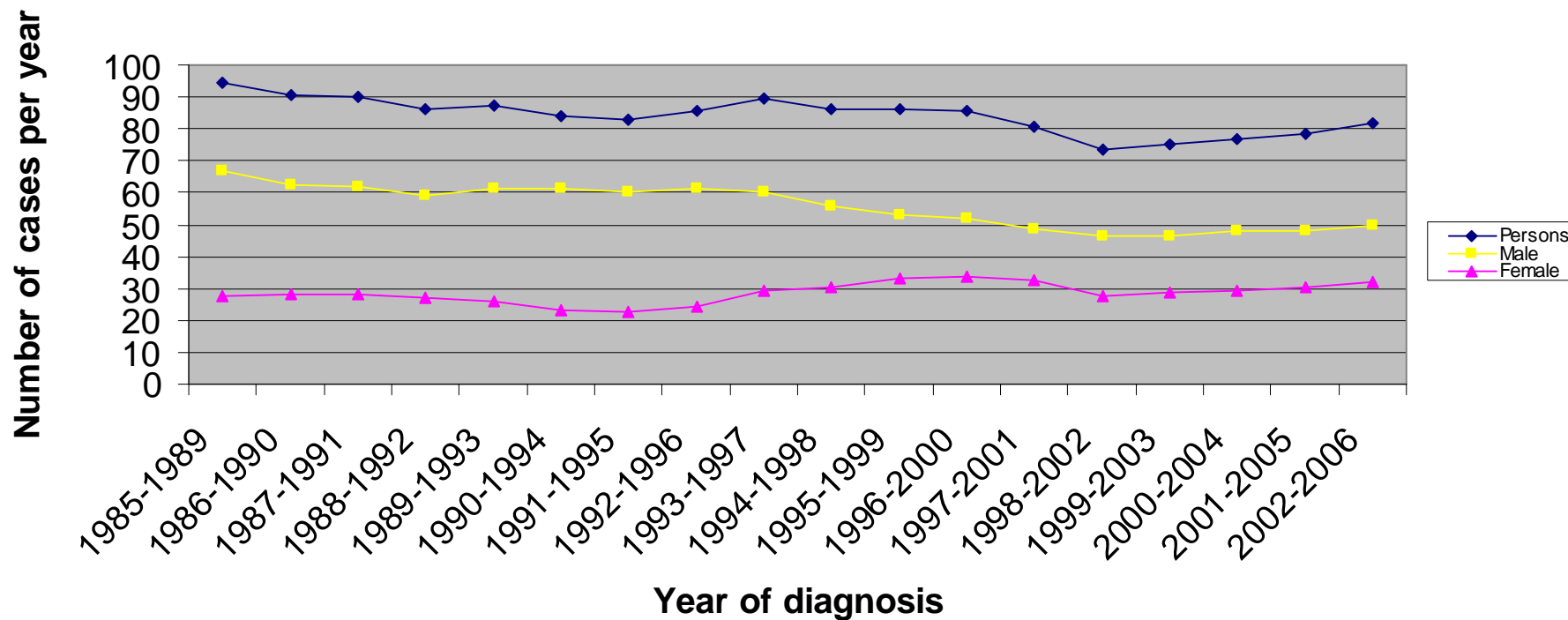
### Incidence of Trachea, Bronchus and Lung cancer (ICD10:C33-C34) in East and North Hertfordshire PCT : Number of cases



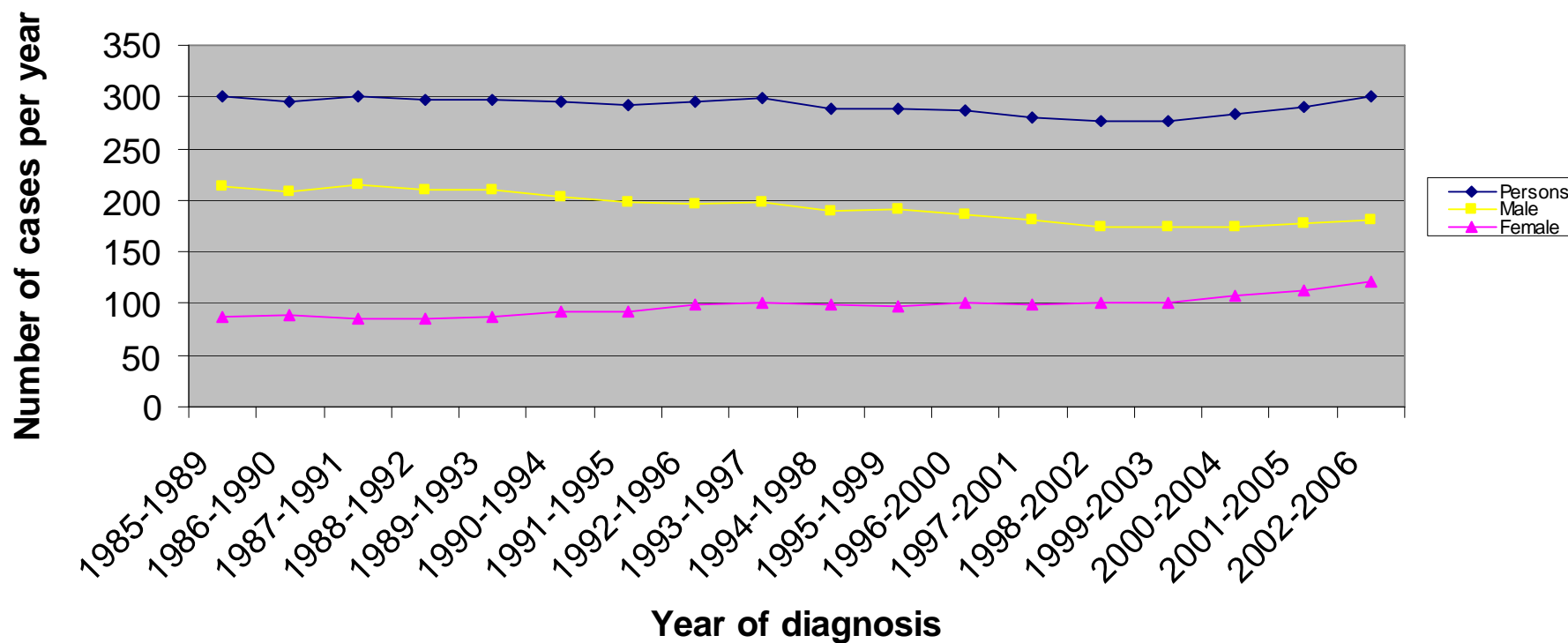
### Incidence of Trachea, Bronchus and Lung cancer (ICD10:C33-C34) in West Hertfordshire PCT : Number of cases



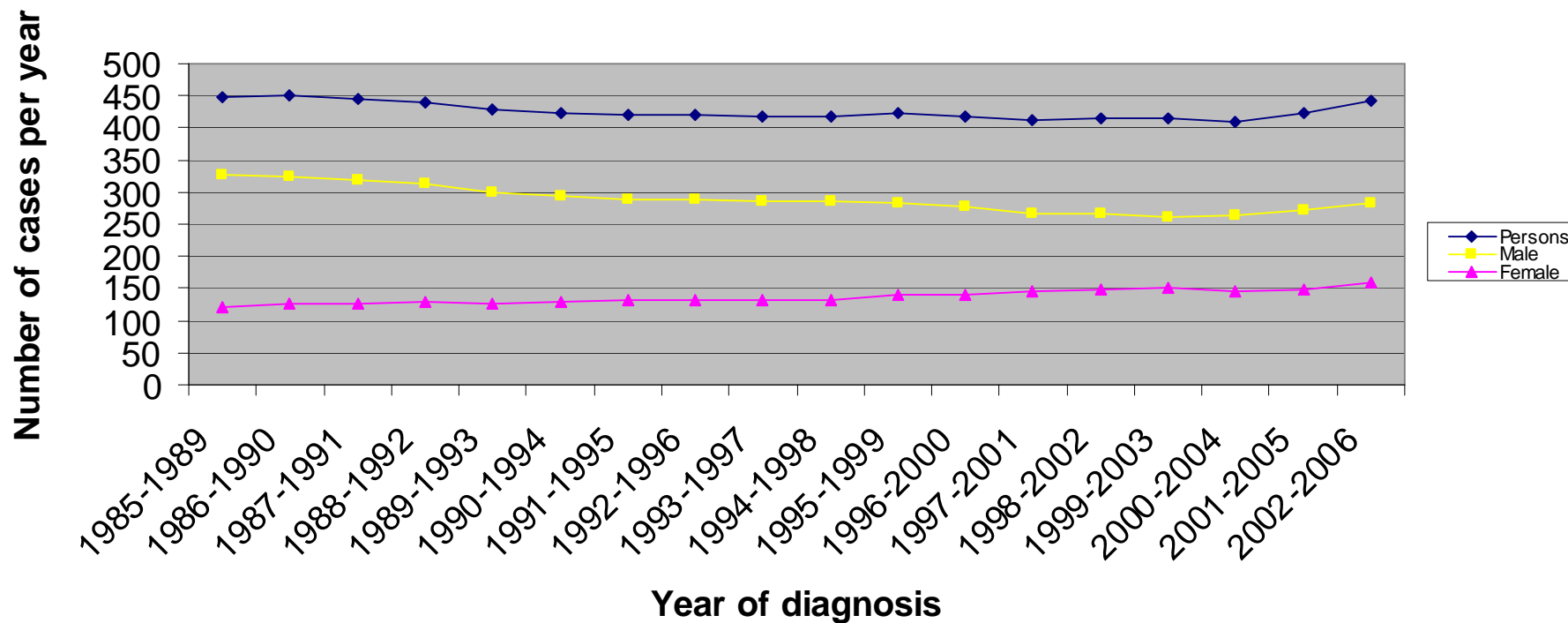
### Incidence of Trachea, Bronchus and Lung cancer (ICD10:C33-C34) in Peterborough PCT : Number of cases



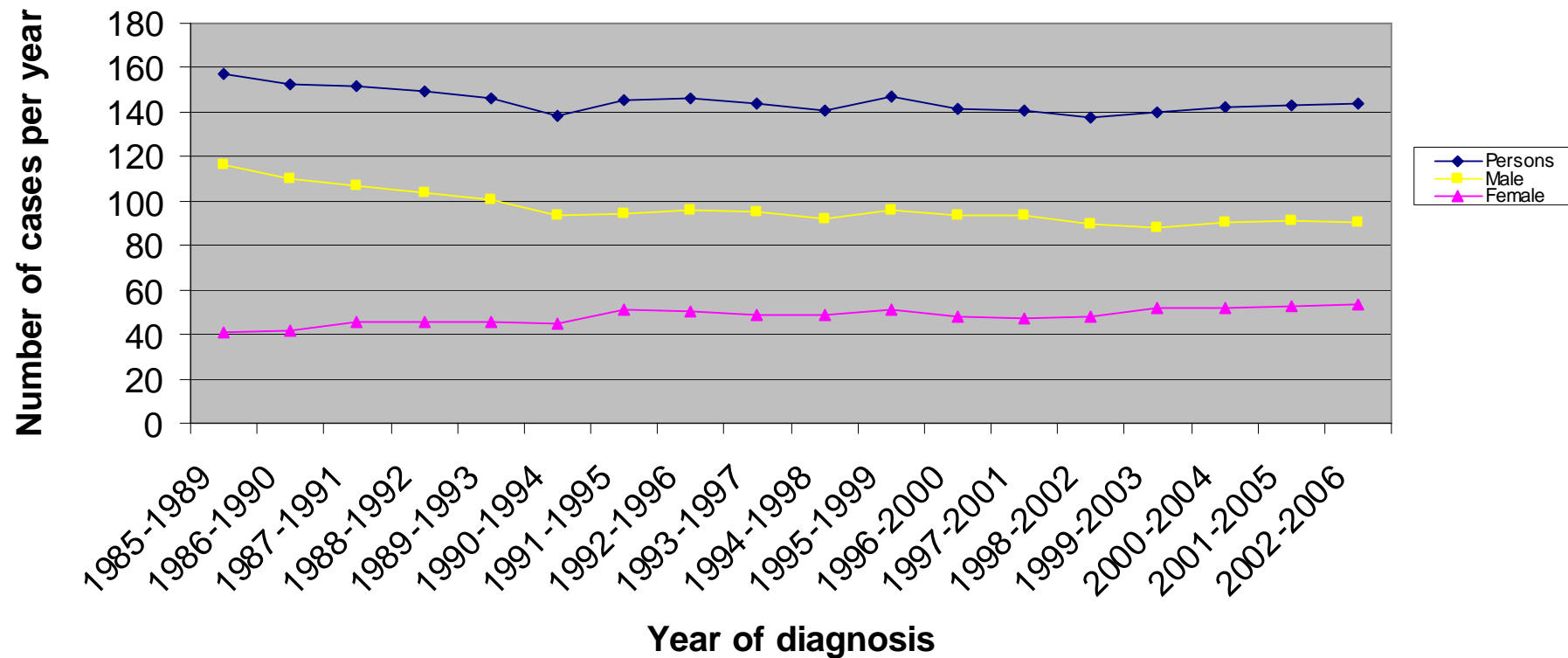
### Incidence of Trachea, Bronchus and Lung cancer (ICD10:C33-C34) in Cambridgeshire PCT : Number of cases



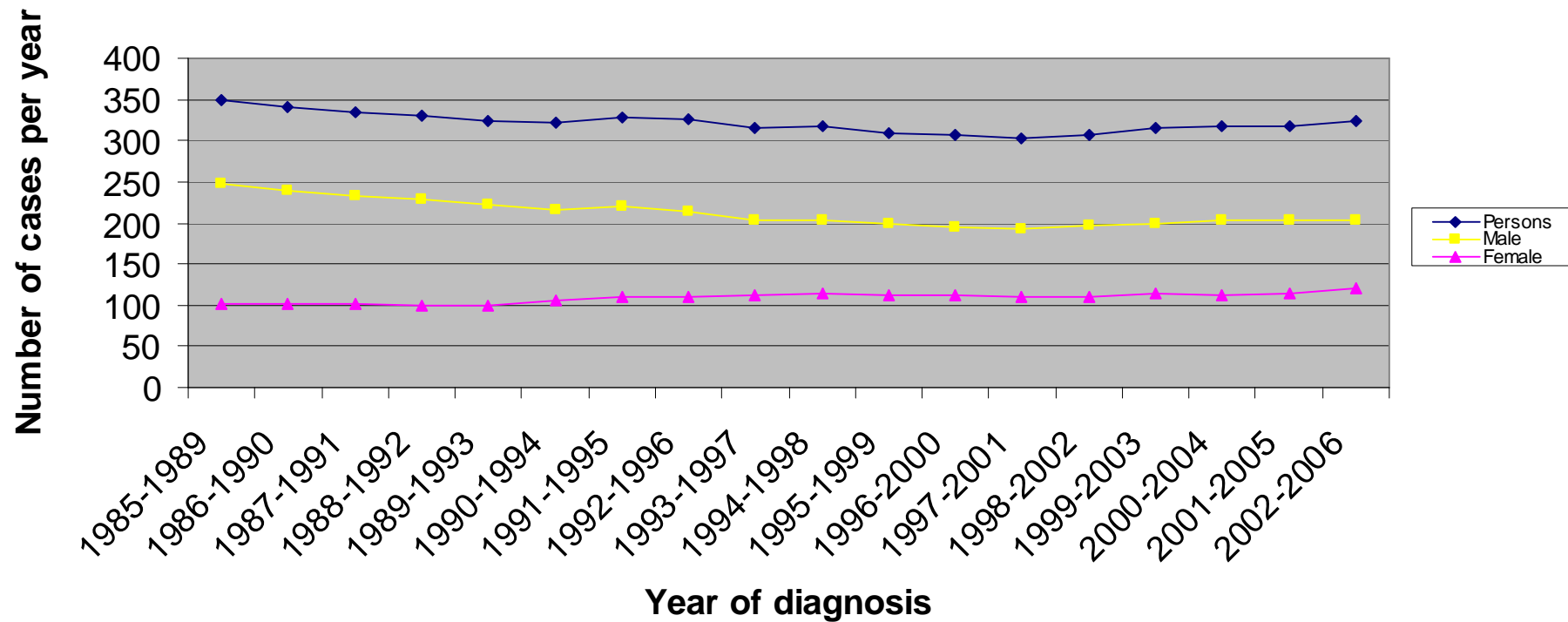
### Incidence of Trachea, Bronchus and Lung cancer (ICD10:C33-C34) in Norfolk PCT : Number of cases



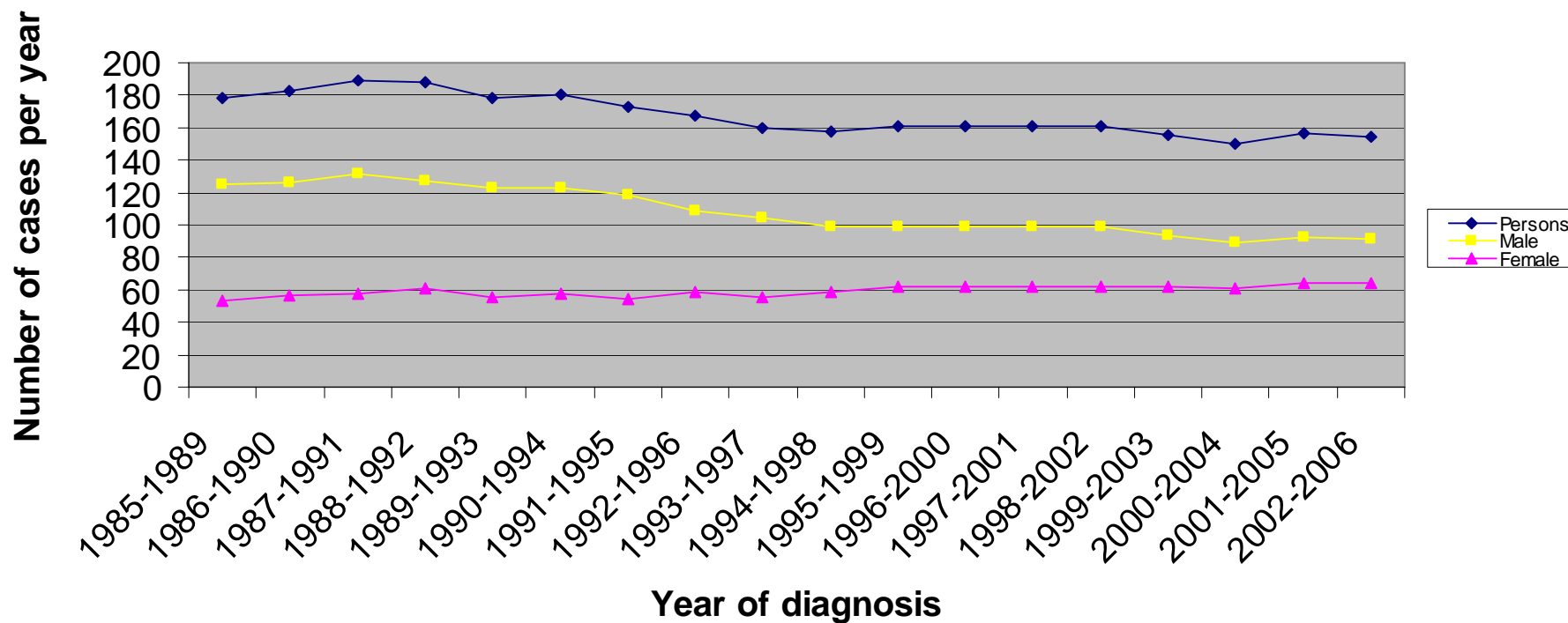
### Incidence of Trachea, Bronchus and Lung cancer (ICD10:C33-C34) in Great Yarmouth and Waveney PCT : Number of cases



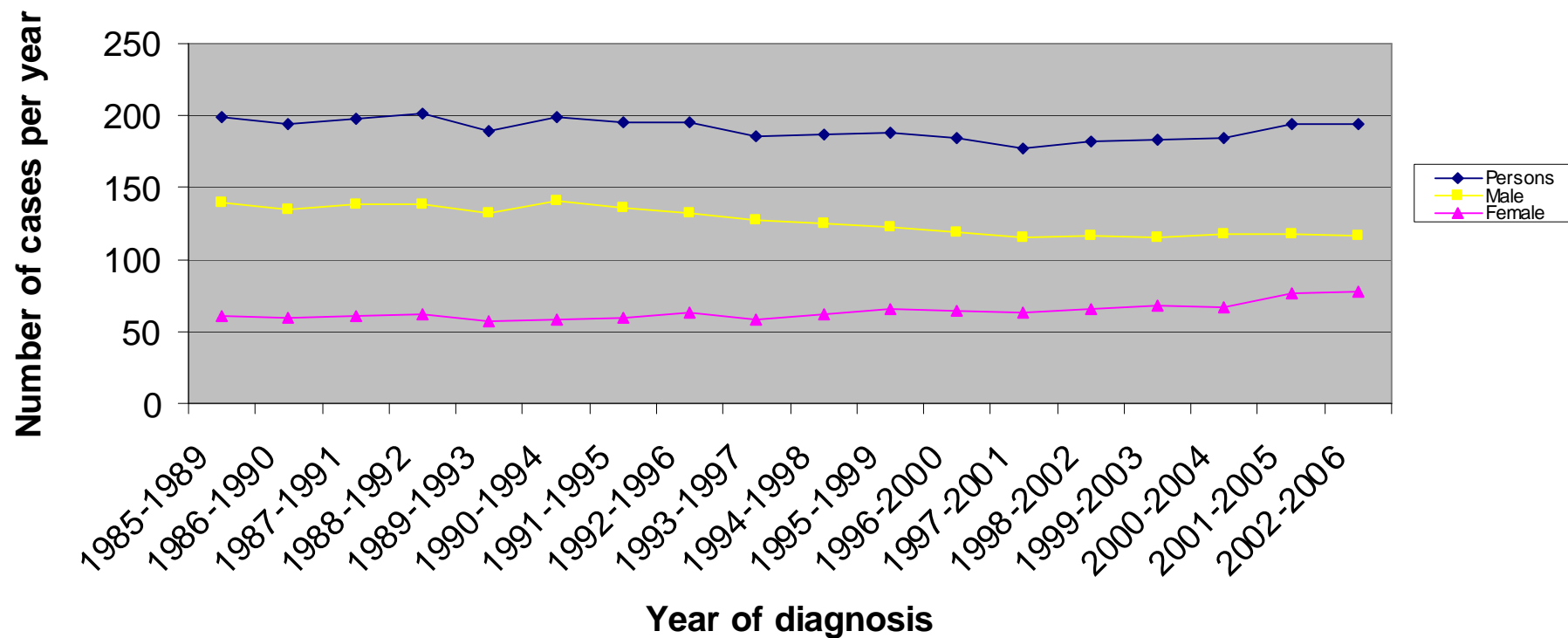
### Incidence of Trachea, Bronchus and Lung cancer (ICD10:C33-C34) in Suffolk PCT : Number of cases



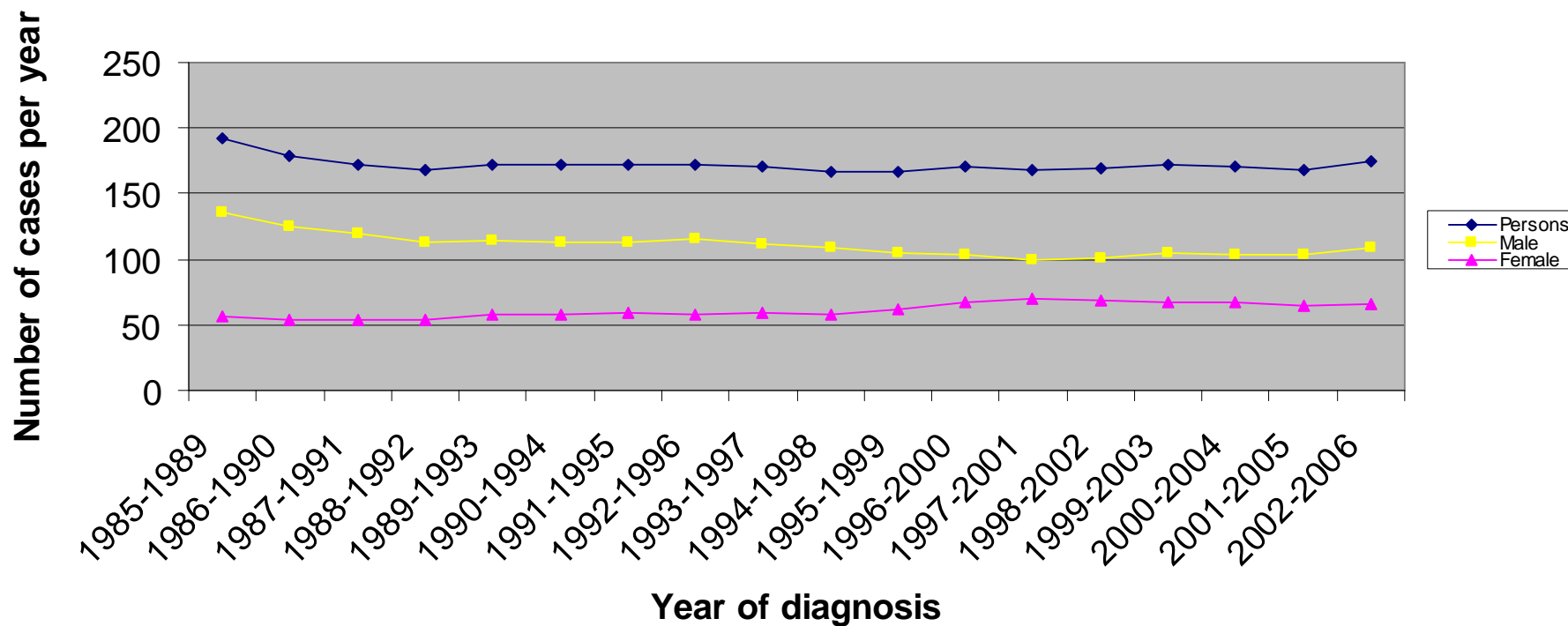
### Incidence of Trachea, Bronchus and Lung cancer (ICD10:C33-C34) in West Essex PCT : Number of cases



### Incidence of Trachea, Bronchus and Lung cancer (ICD10:C33-C34) in North East Essex PCT : Number of cases



### Incidence of Trachea, Bronchus and Lung cancer (ICD10:C33-C34) in Mid Essex PCT : Number of cases



### Incidence of Trachea, Bronchus and Lung cancer (ICD10:C33-C34) in South West Essex PCT : Number of cases

