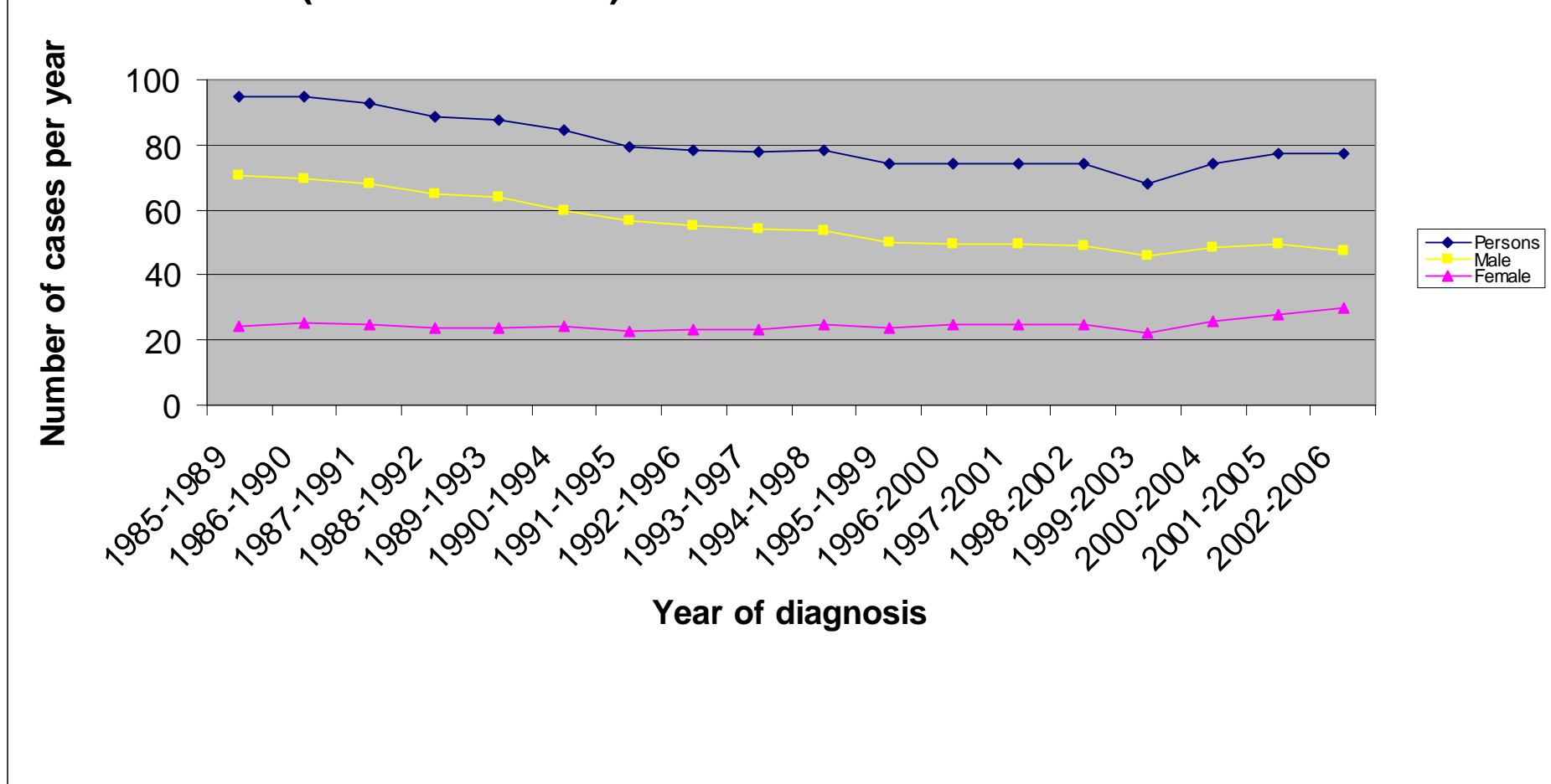
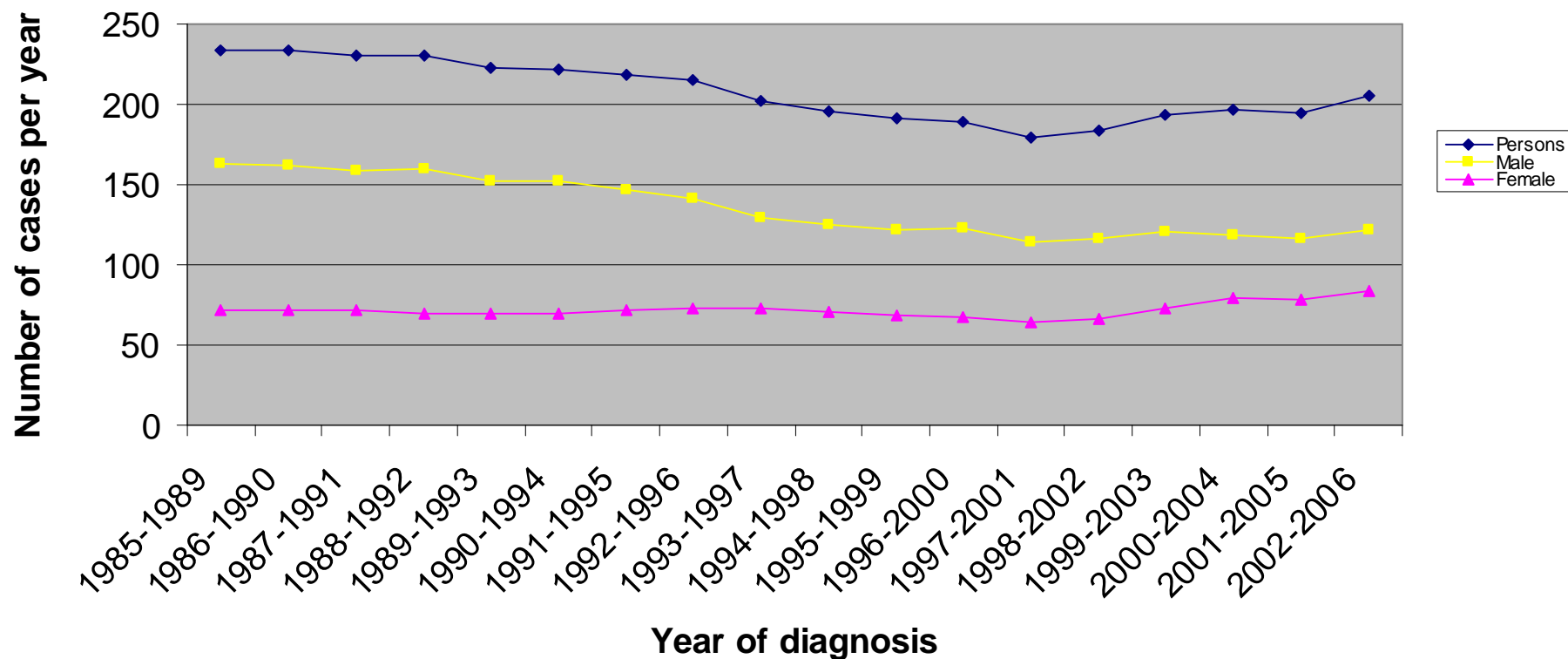


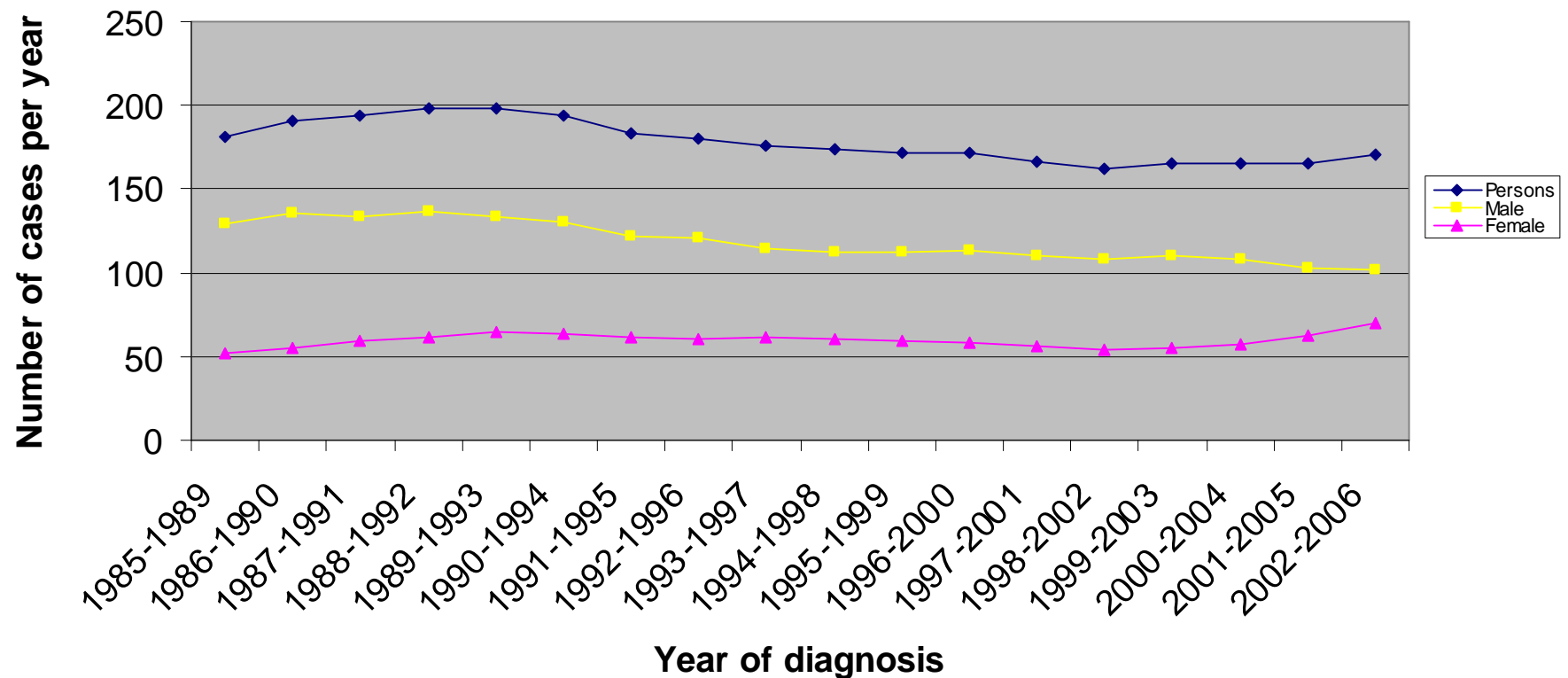
## Mortality from Trachea, Bronchus and Lung cancer (ICD10:C33-C34) in Luton PCT: Number of cases



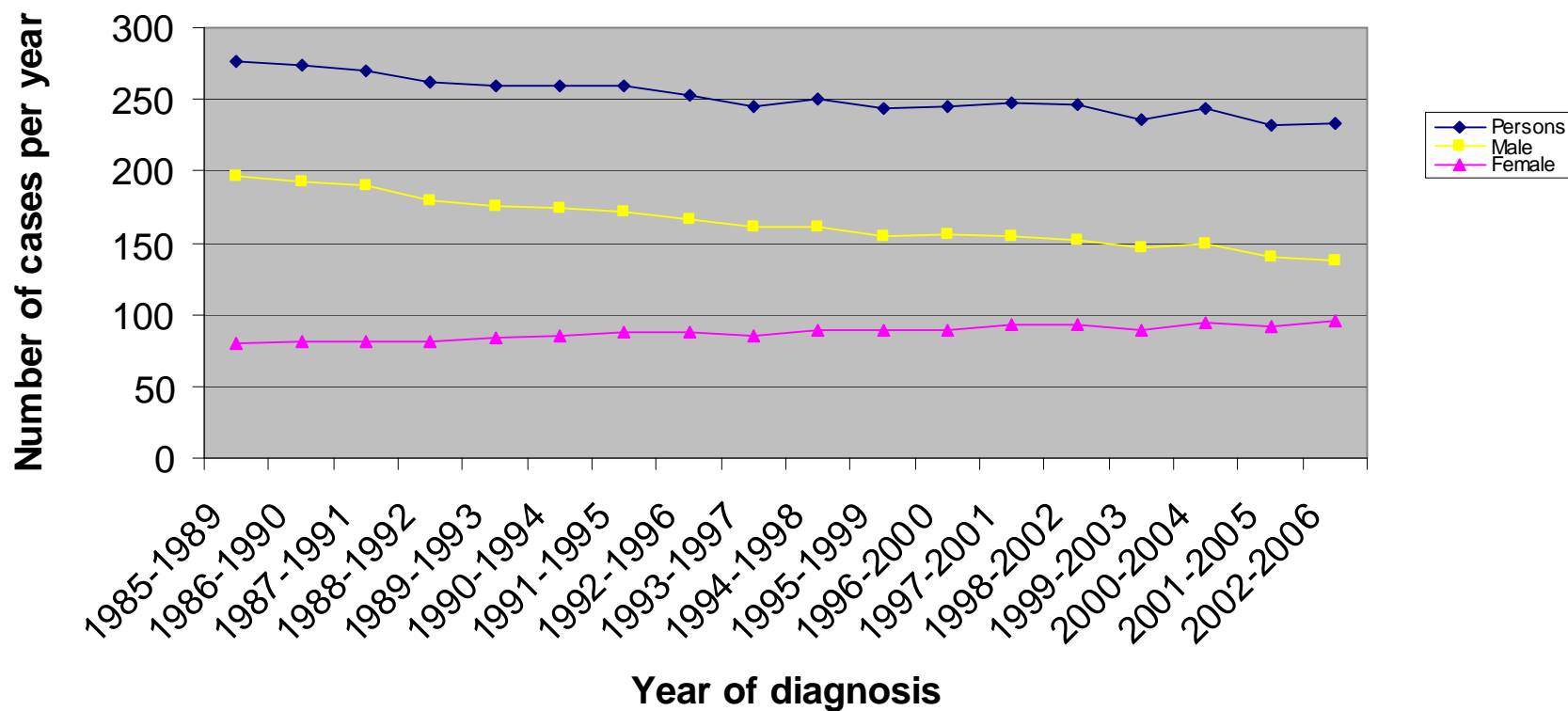
### Mortality from Trachea, Bronchus and Lung cancer (ICD10:C33-C34) in South East Essex PCT: Number of cases



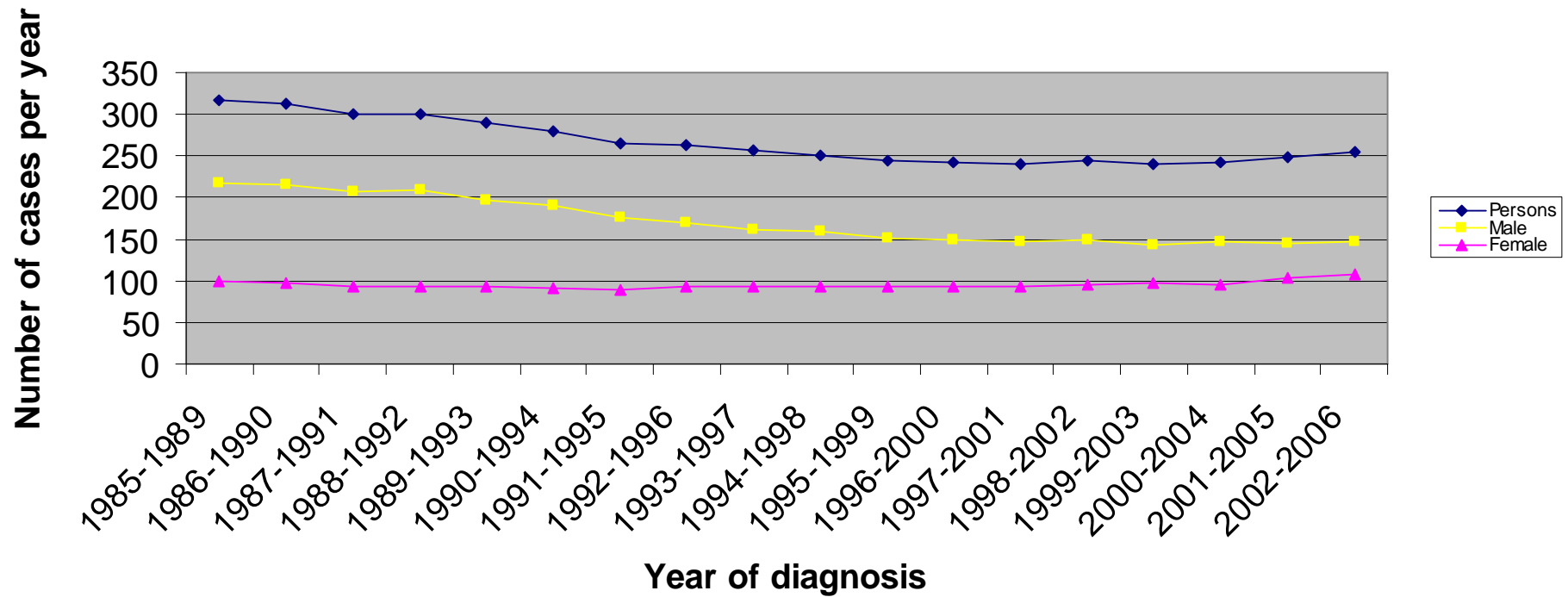
### Mortality from Trachea, Bronchus and Lung cancer (ICD10:C33-C34) in Bedfordshire PCT: Number of cases



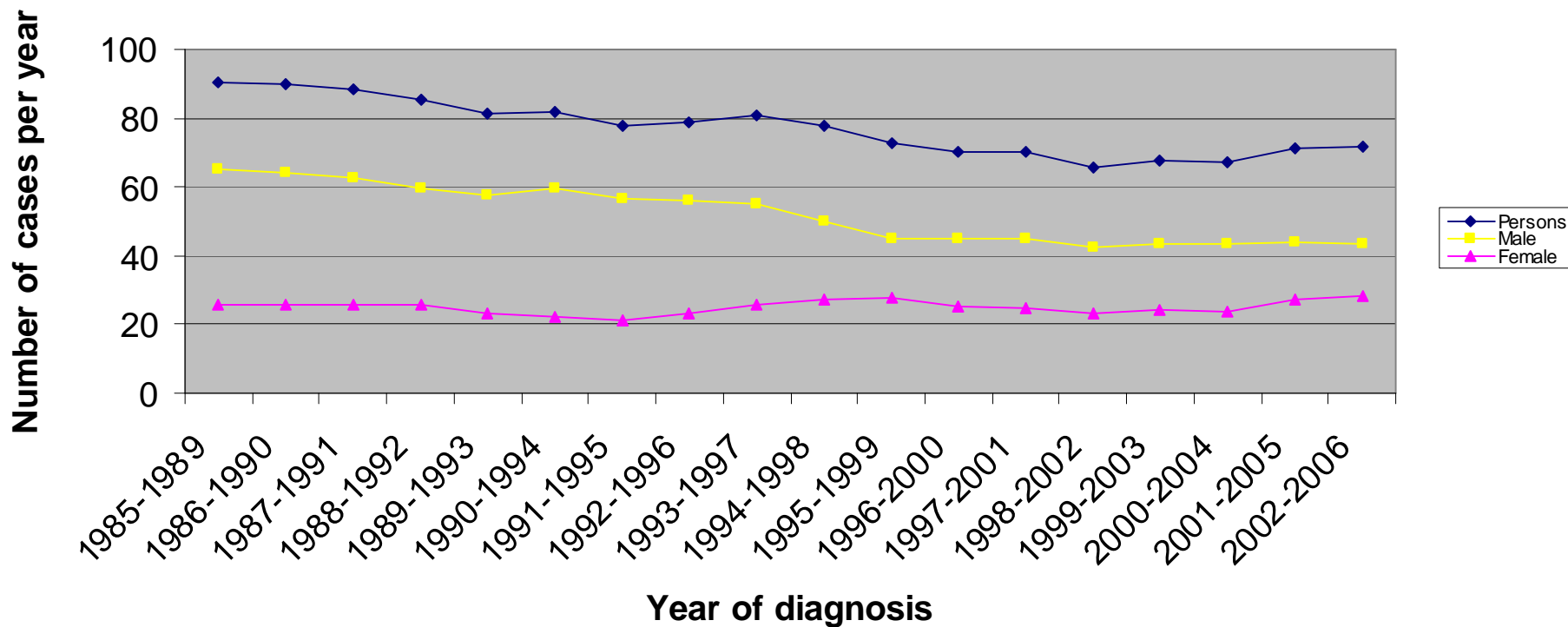
### Mortality from Trachea, Bronchus and Lung cancer (ICD10:C33-C34) in East and North Hertfordshire PCT: Number of cases



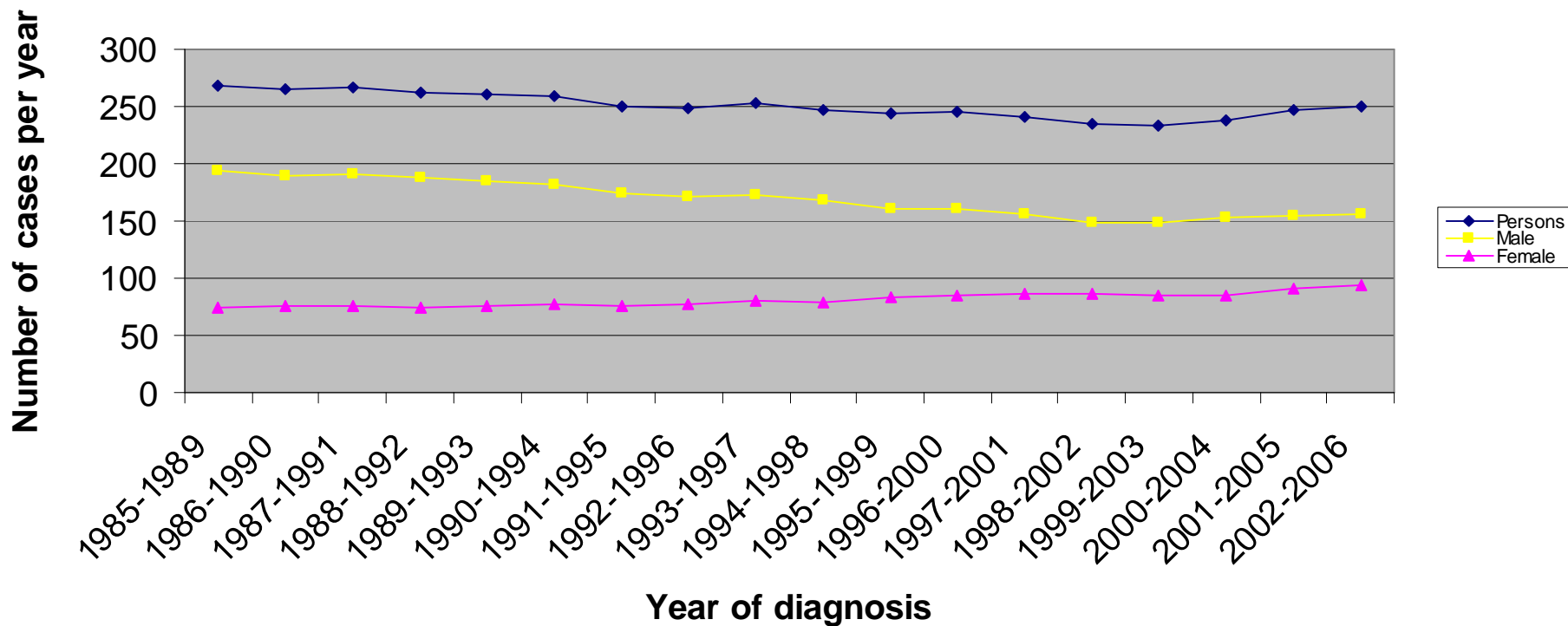
### Mortality from Trachea, Bronchus and Lung cancer (ICD10:C33-C34) in West Hertfordshire PCT: Number of cases



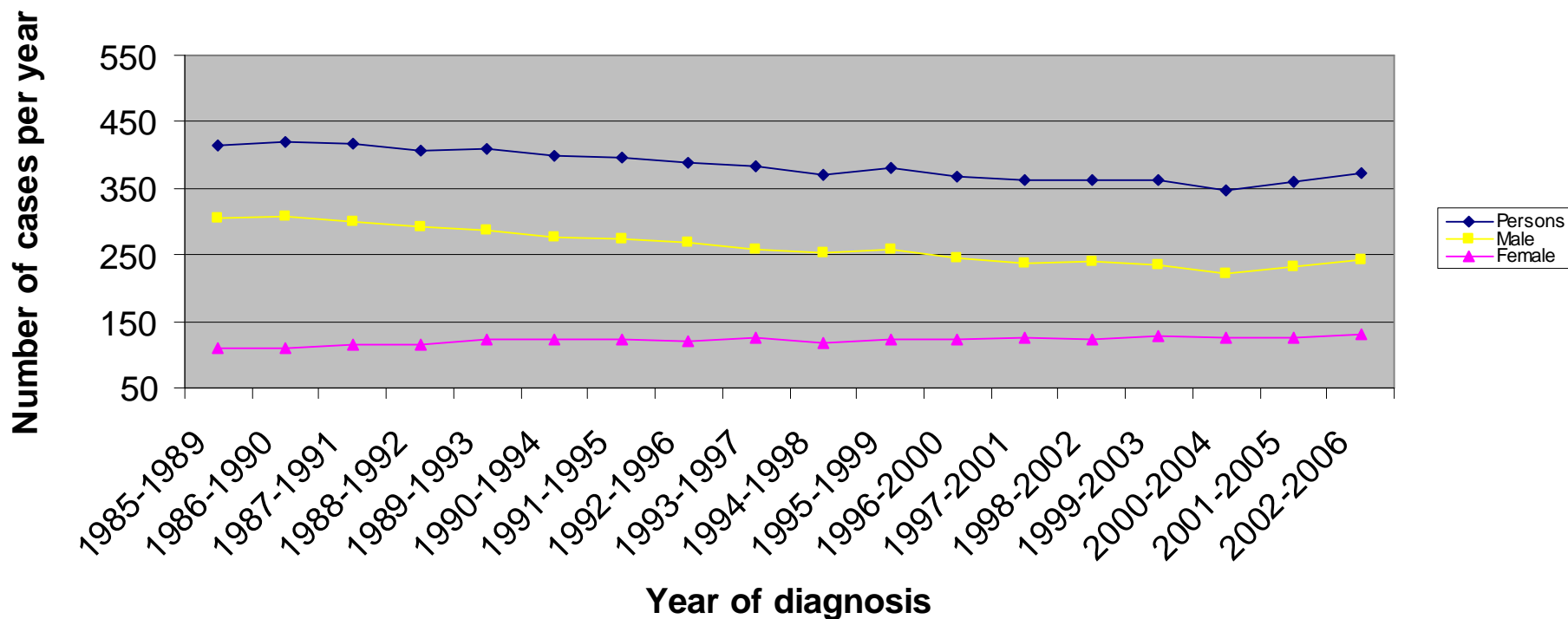
### Mortality from Trachea, Bronchus and Lung cancer (ICD10:C33-C34) in Peterborough PCT: Number of cases



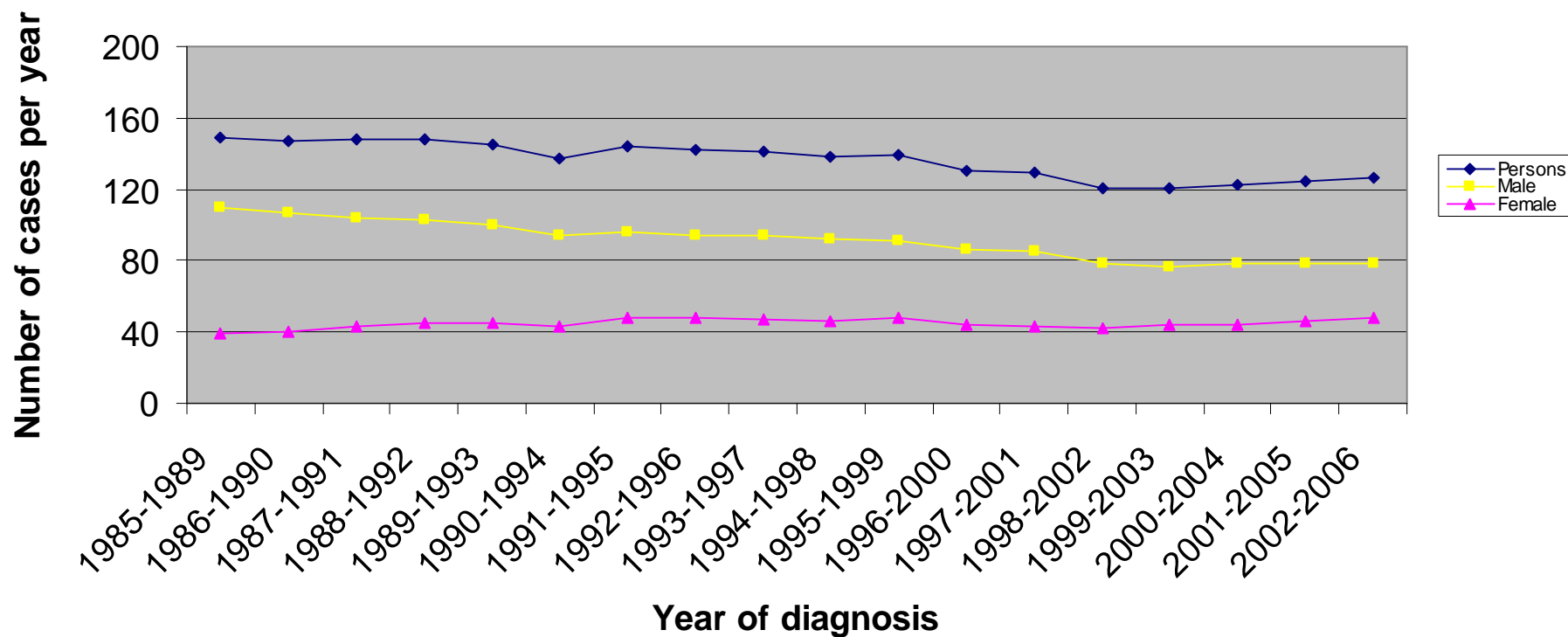
### Mortality from Trachea, Bronchus and Lung cancer (ICD10:C33-C34) in Cambridgeshire PCT: Number of cases



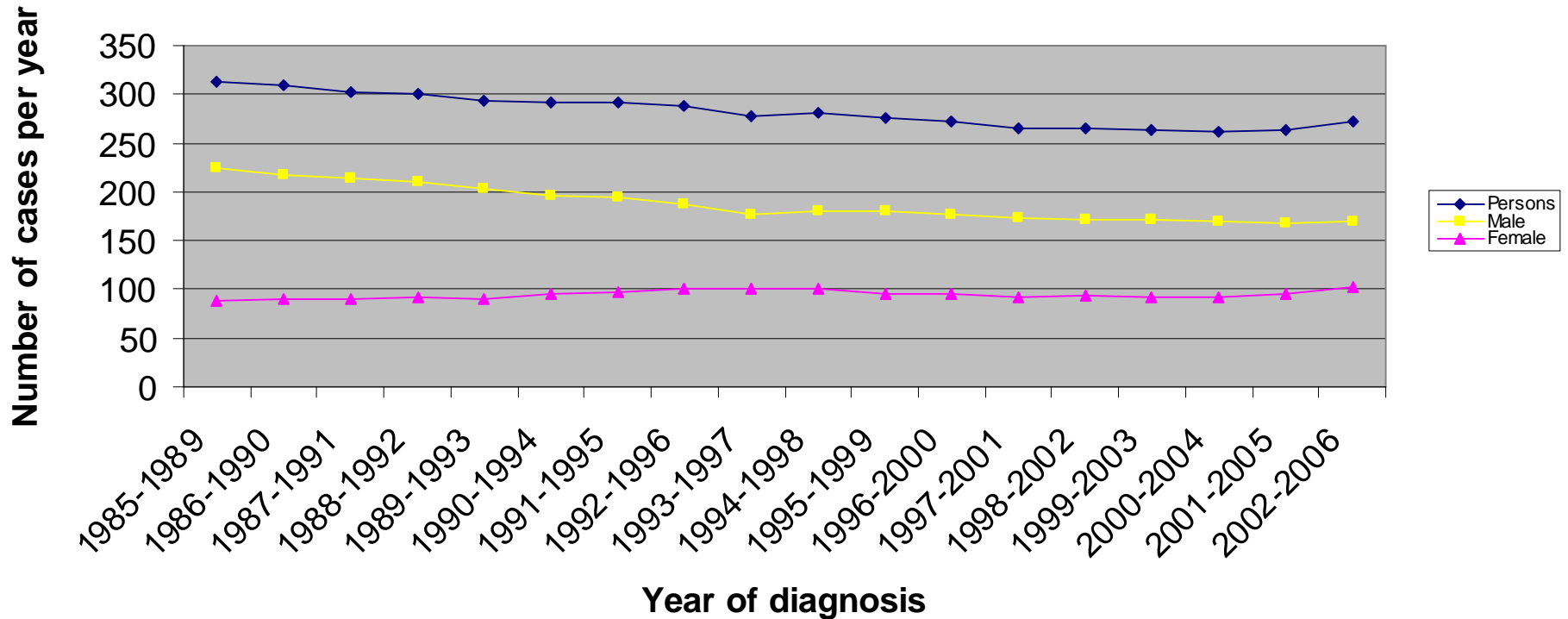
### Mortality from Trachea, Bronchus and Lung cancer (ICD10:C33-C34) in Norfolk PCT: Number of cases



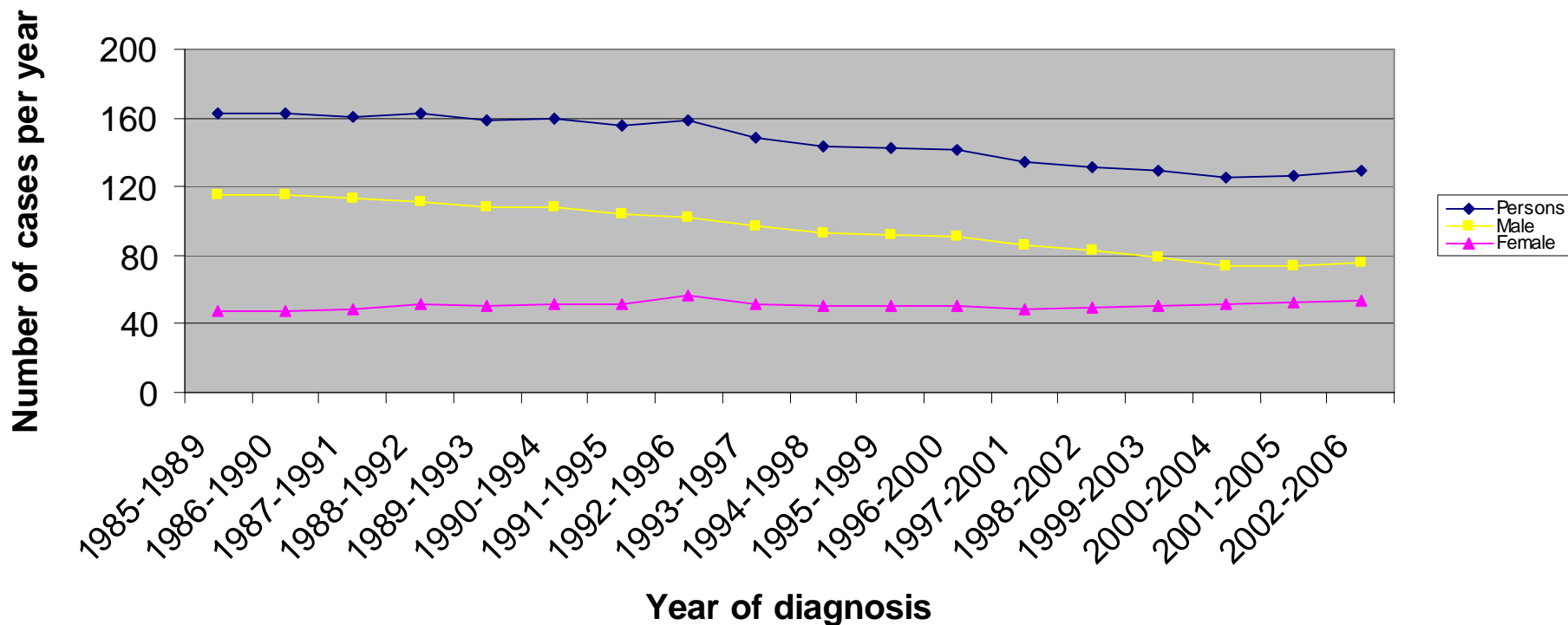
### Mortality from Trachea, Bronchus and Lung cancer (ICD10:C33-C34) in Great Yarmouth and Waveney PCT: Number of cases



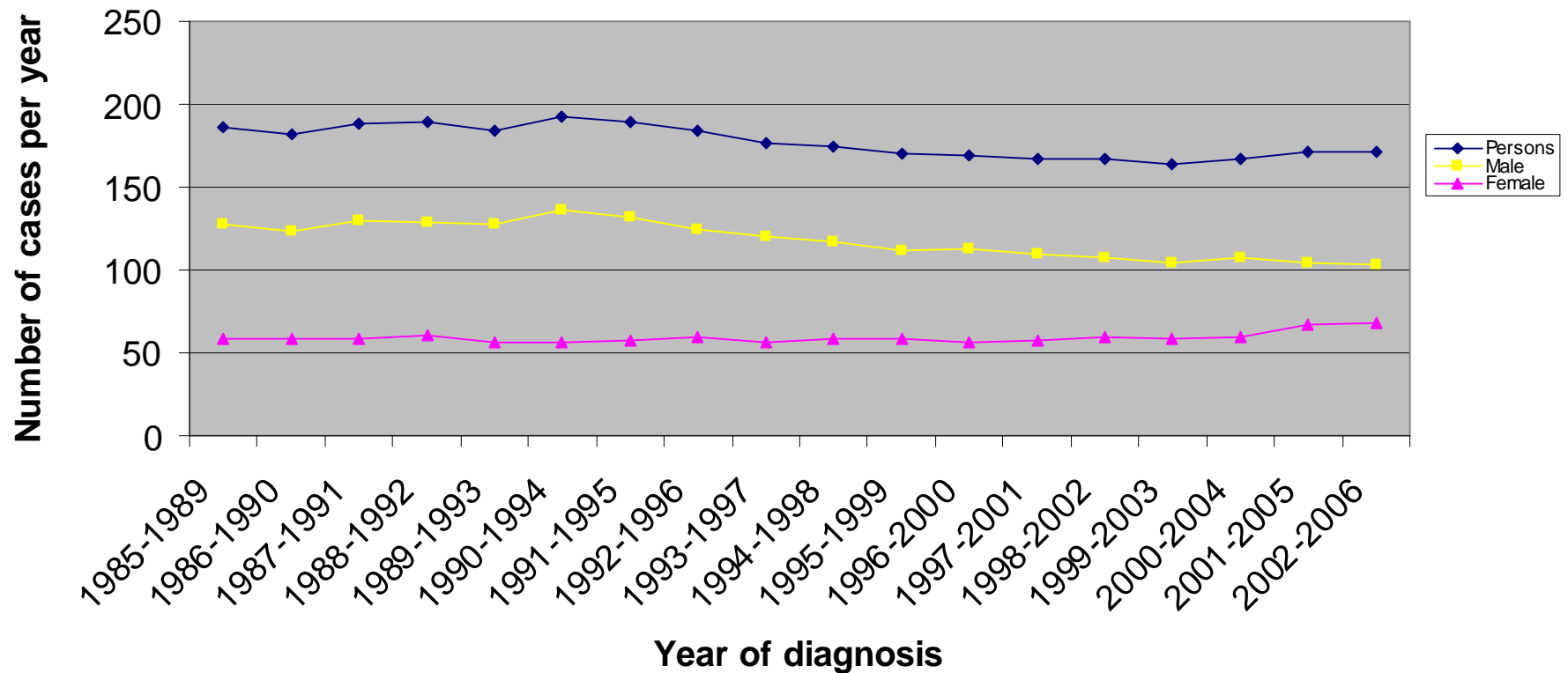
### Mortality from Trachea, Bronchus and Lung cancer (ICD10:C33-C34) in Suffolk PCT: Number of cases



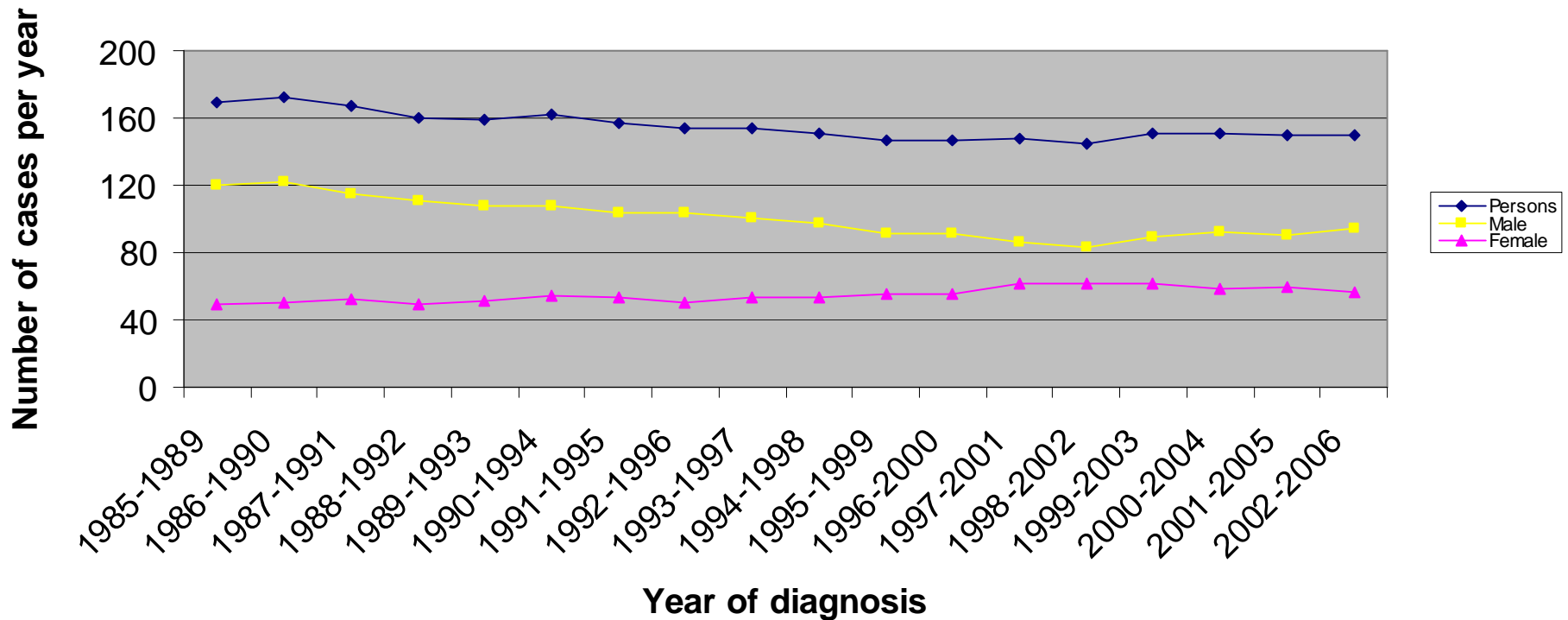
### Mortality from Trachea, Bronchus and Lung cancer (ICD10:C33-C34) in West Essex PCT: Number of cases



### Mortality from Trachea, Bronchus and Lung cancer (ICD10:C33-C34) in North East Essex PCT: Number of cases



### Mortality from Trachea, Bronchus and Lung cancer (ICD10:C33-C34) in Mid Essex PCT: Number of cases



### Mortality from Trachea, Bronchus and Lung cancer (ICD10:C33-C34) in South West Essex PCT: Number of cases

