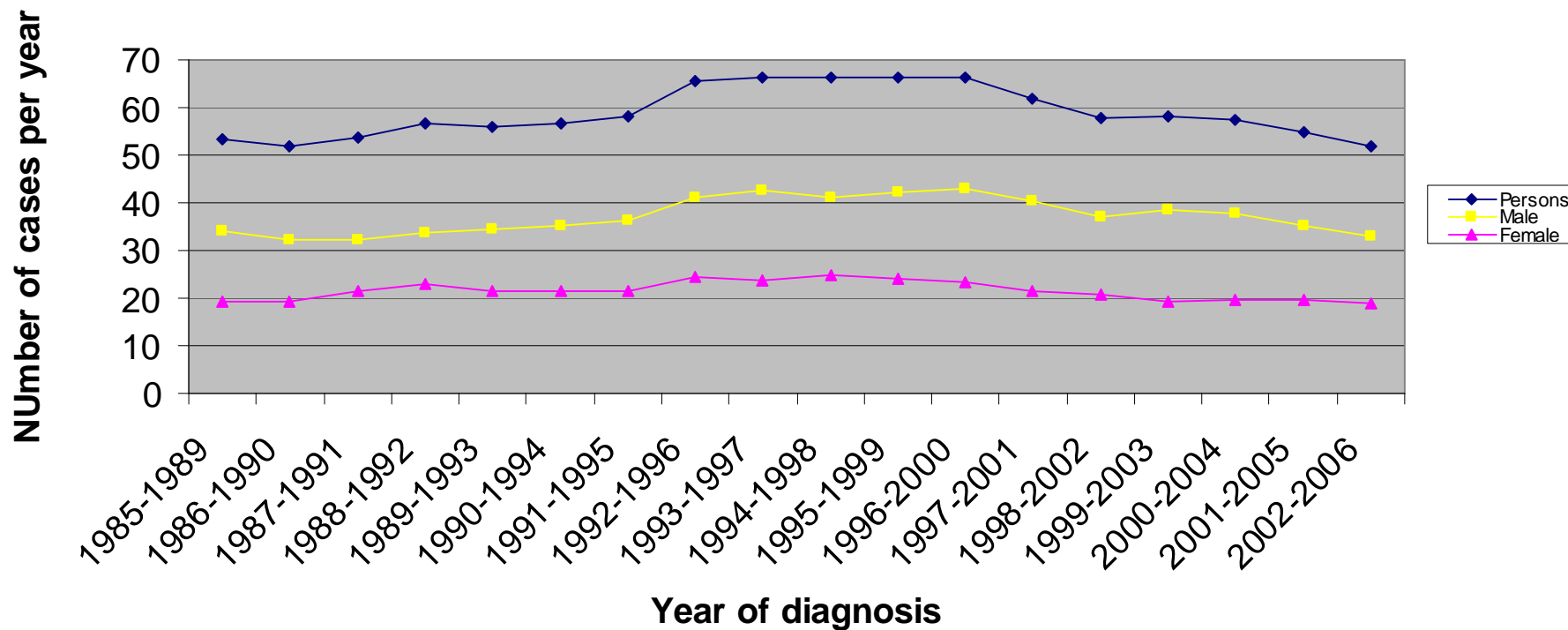
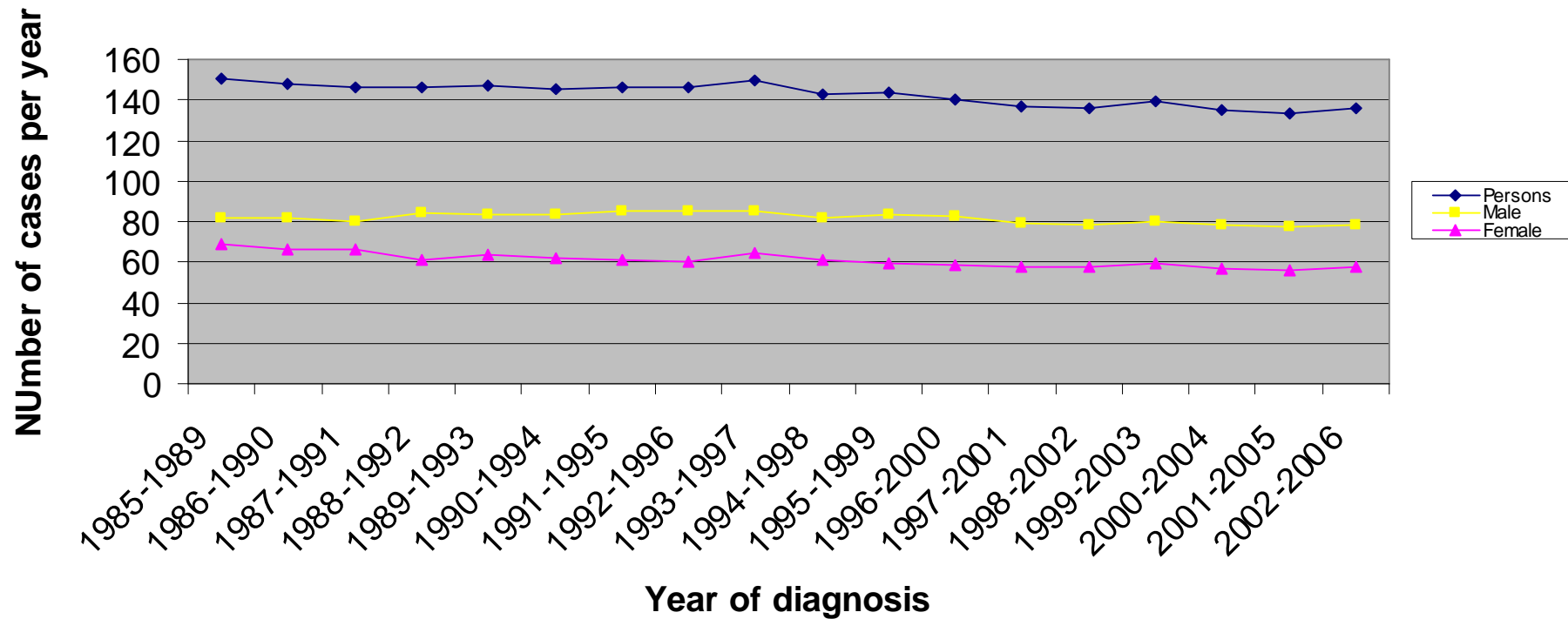


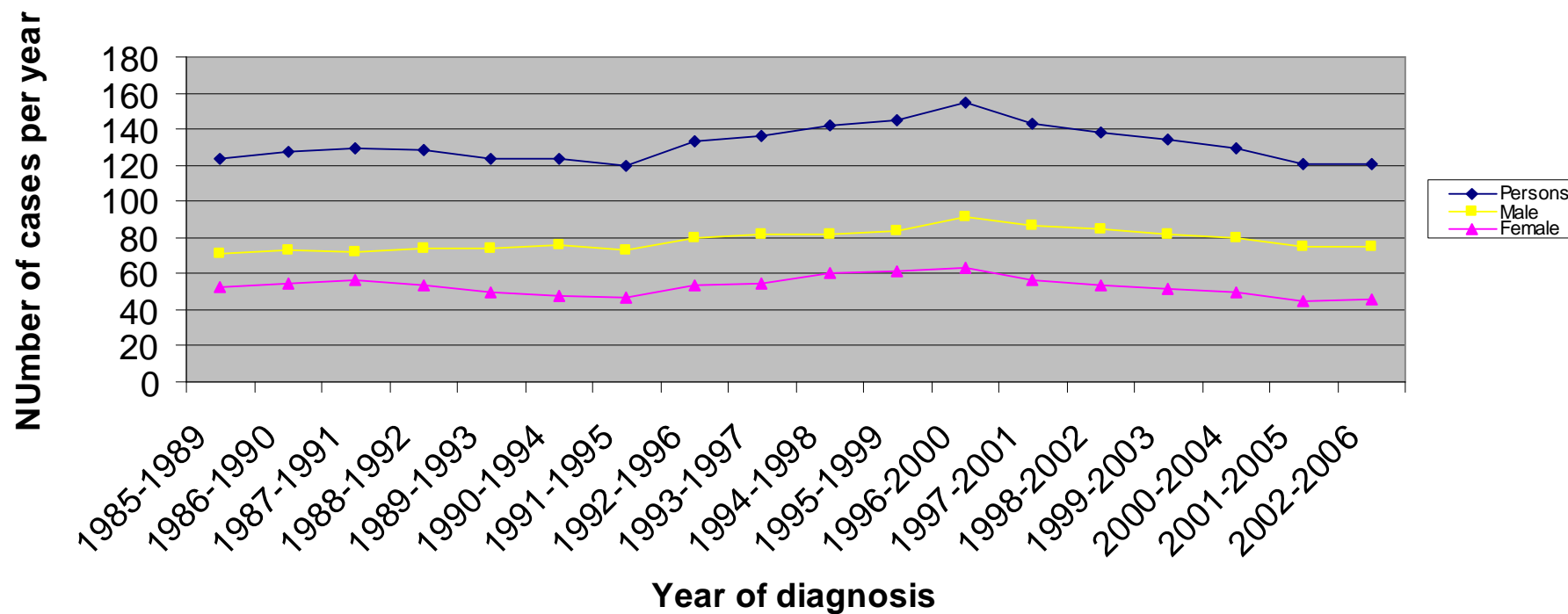
### Incidence of Upper Gastrointestinal cancer (ICD10:C15-C16+C25) in Luton PCT : Number of cases



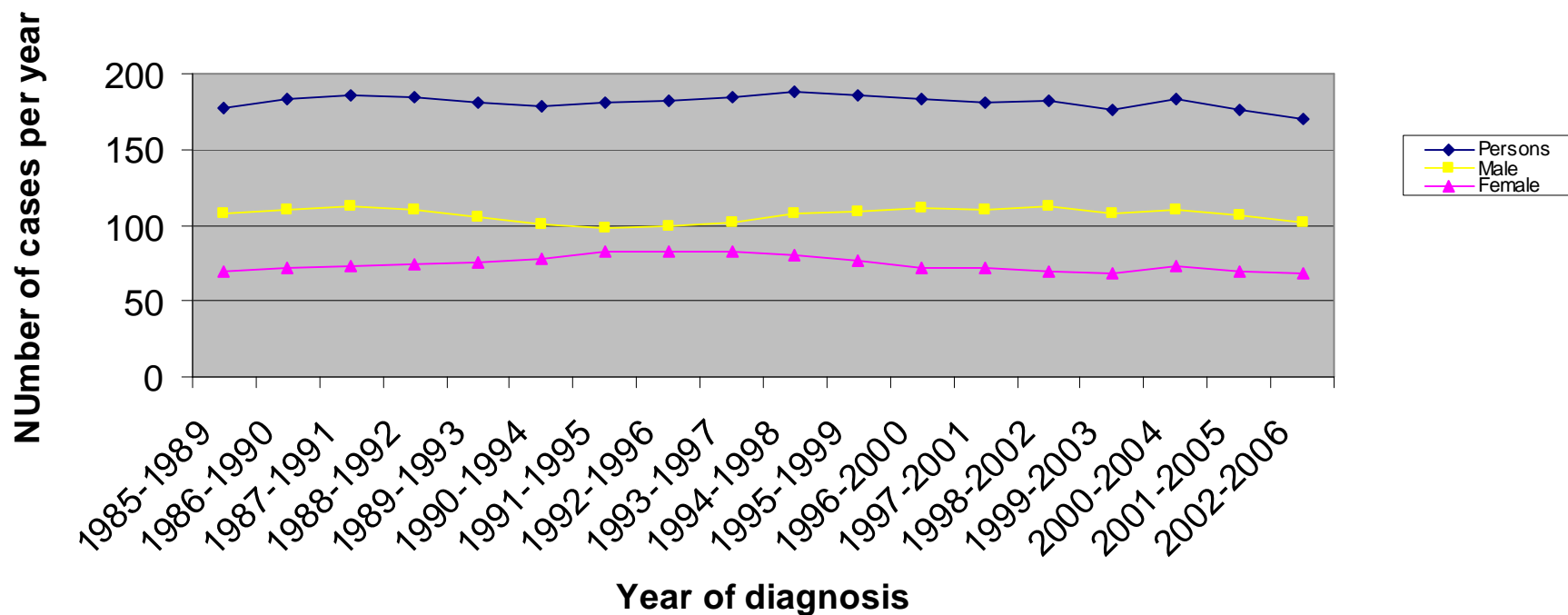
### Incidence of Upper Gastrointestinal cancer (ICD10:C15-C16+C25) in South East Essex PCT : Number of cases



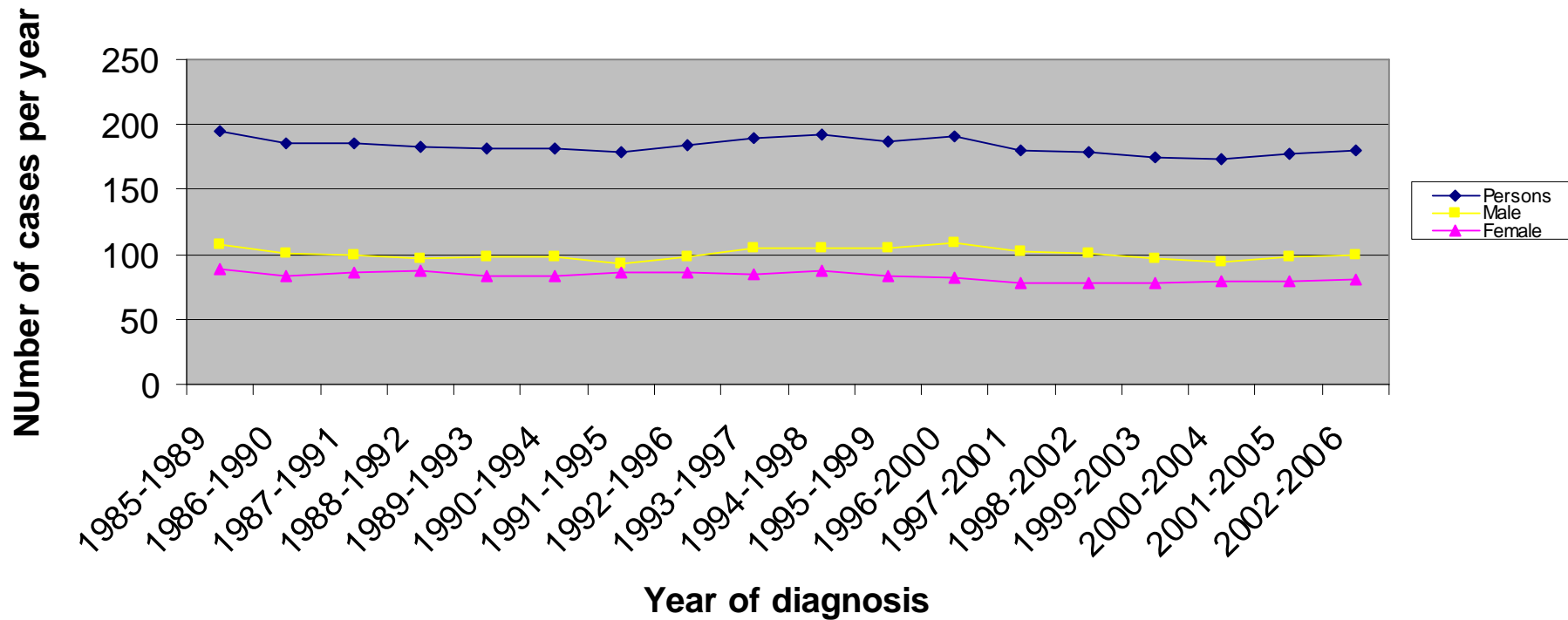
## Incidence of Upper Gastrointestinal cancer (ICD10:C15-C16+C25) in Bedfordshire PCT : Number of cases

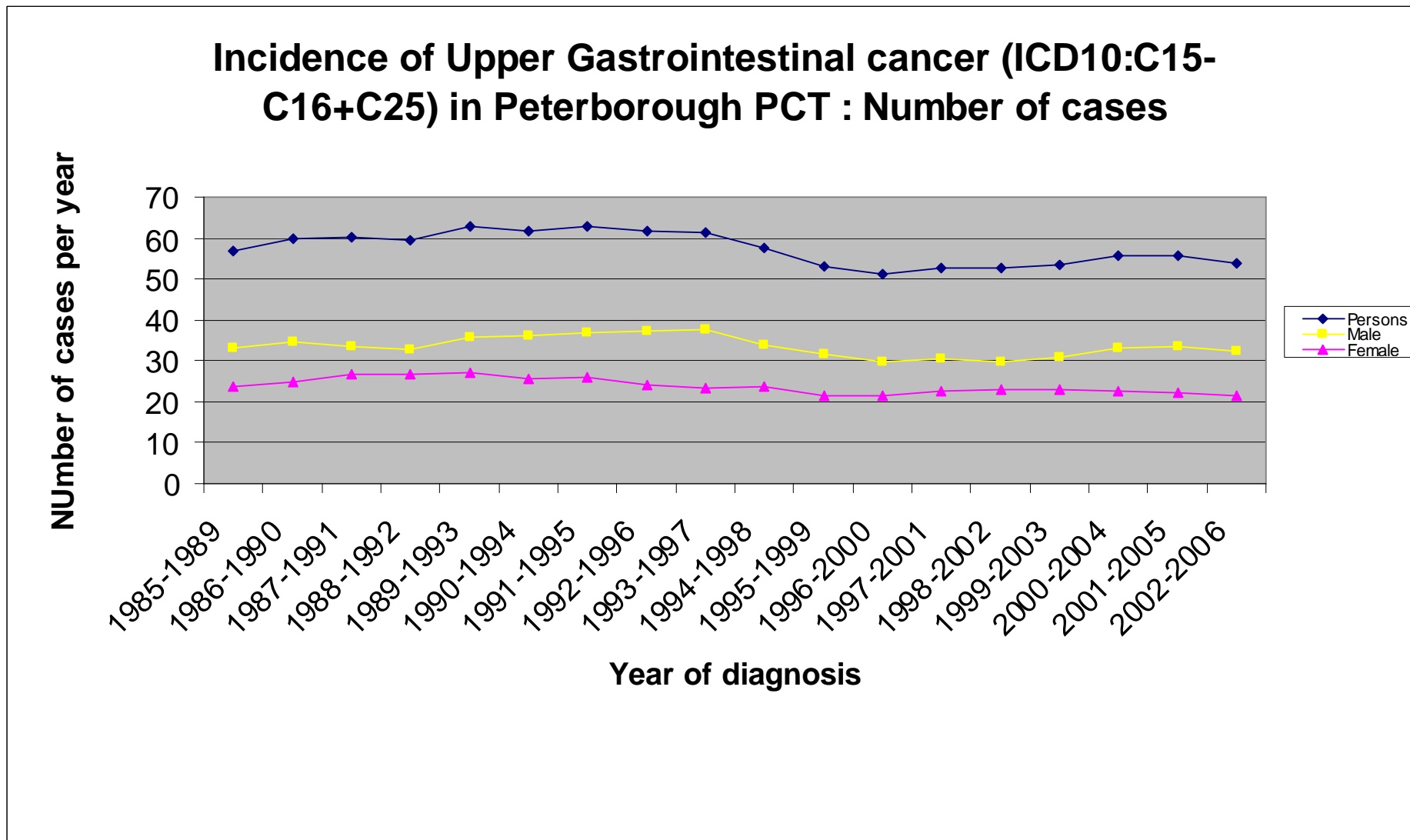


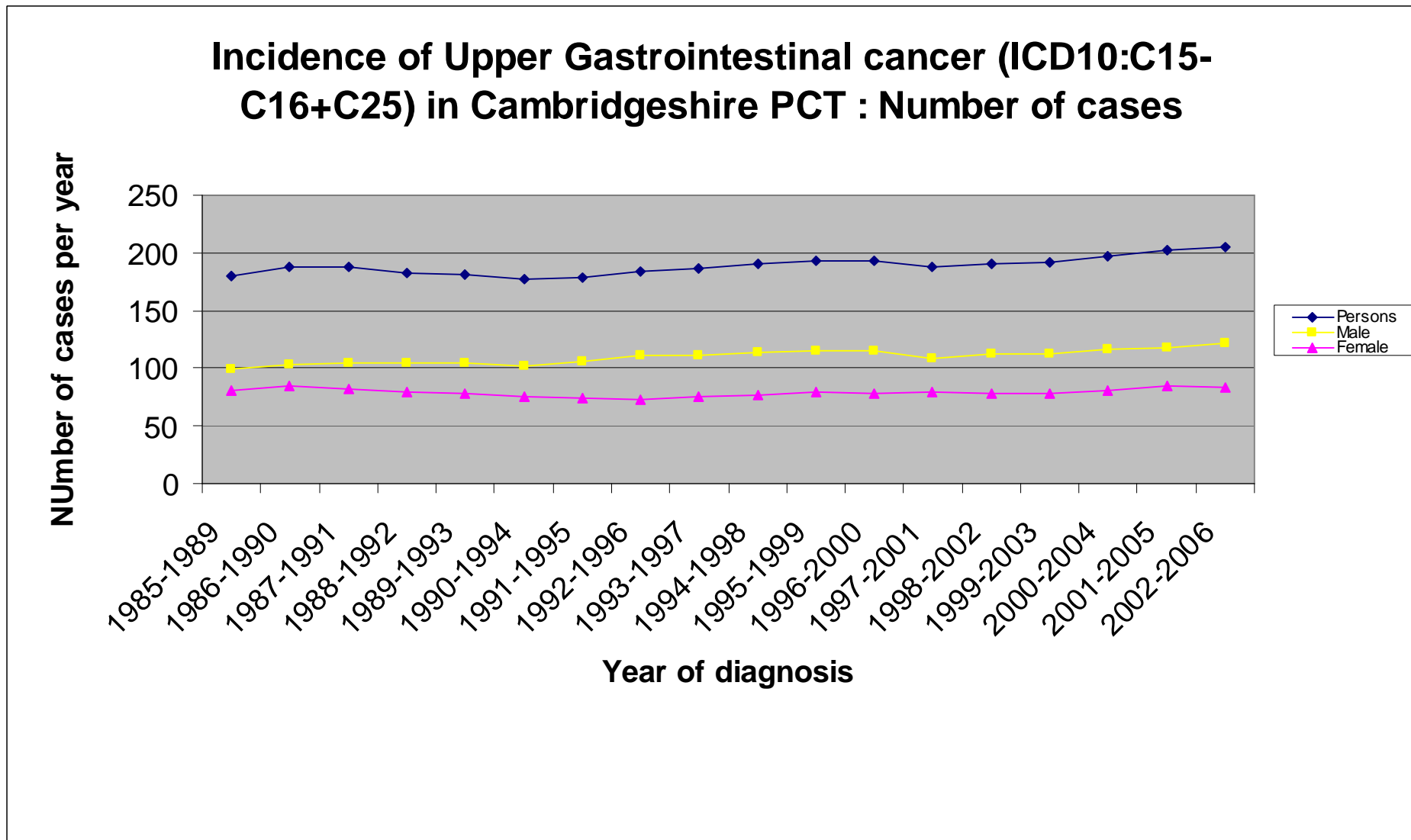
### Incidence of Upper Gastrointestinal cancer (ICD10:C15-C16+C25) in East and North Hertfordshire PCT : Number of cases



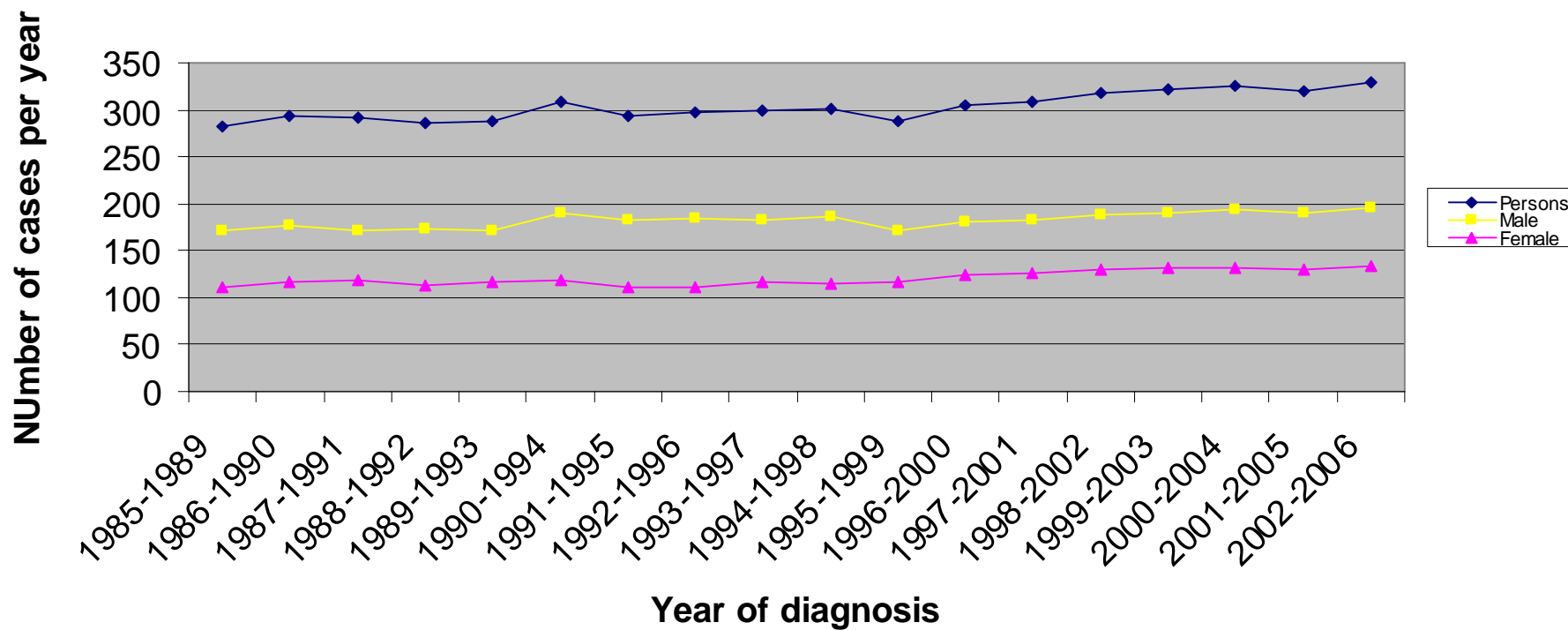
### Incidence of Upper Gastrointestinal cancer (ICD10:C15-C16+C25) in West Hertfordshire PCT : Number of cases



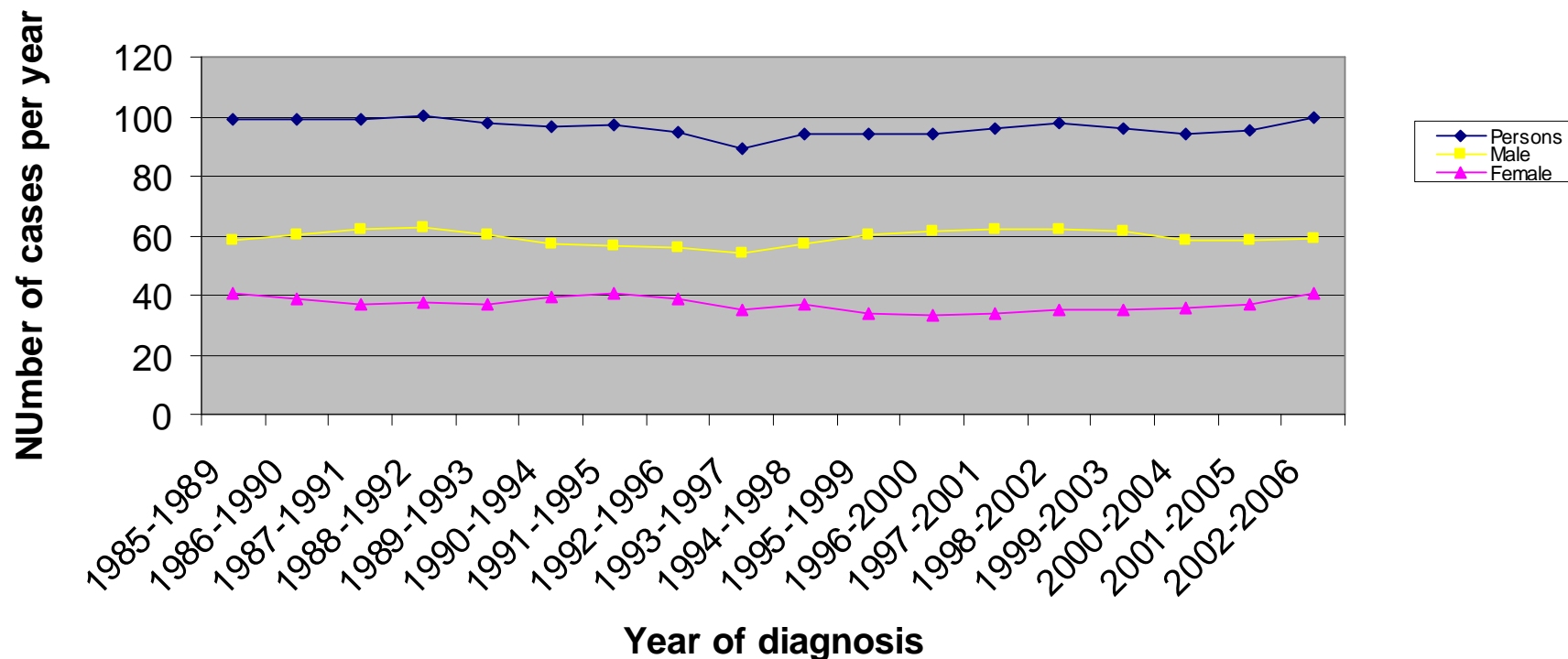




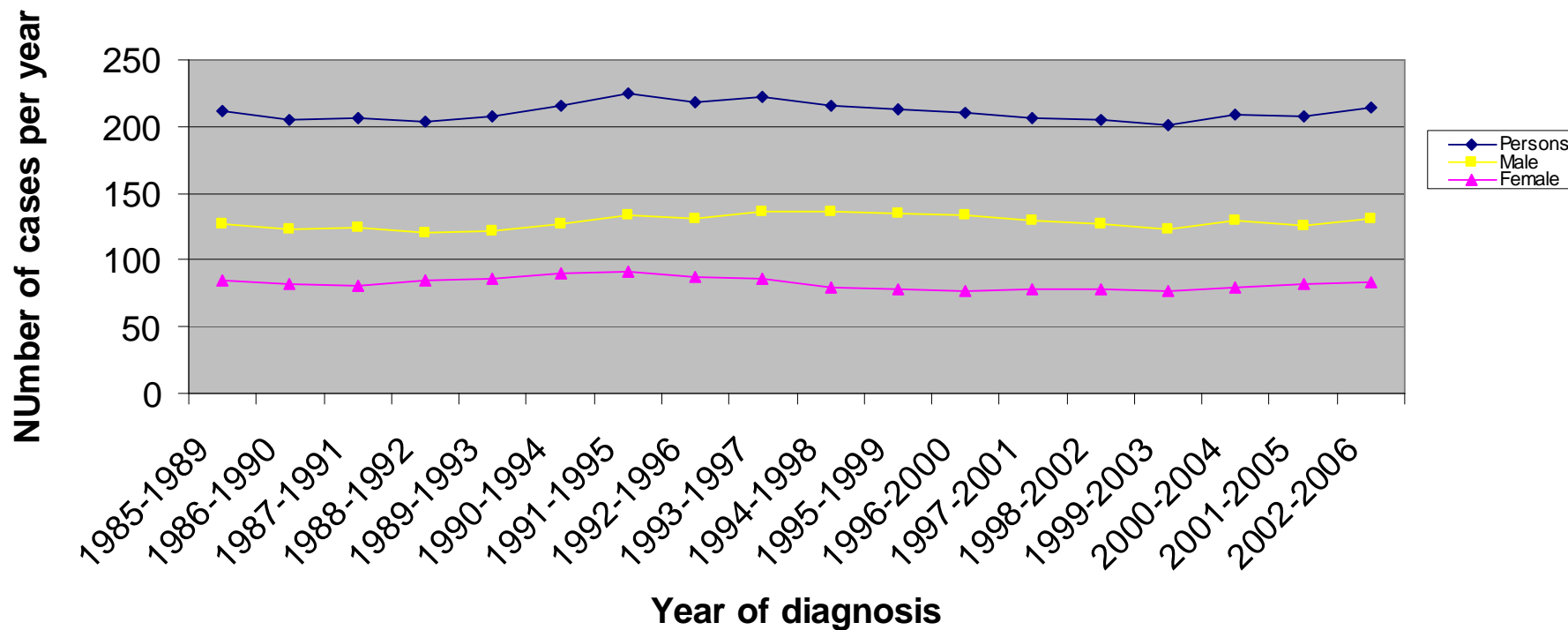
### Incidence of Upper Gastrointestinal cancer (ICD10:C15-C16+C25) in Norfolk PCT : Number of cases



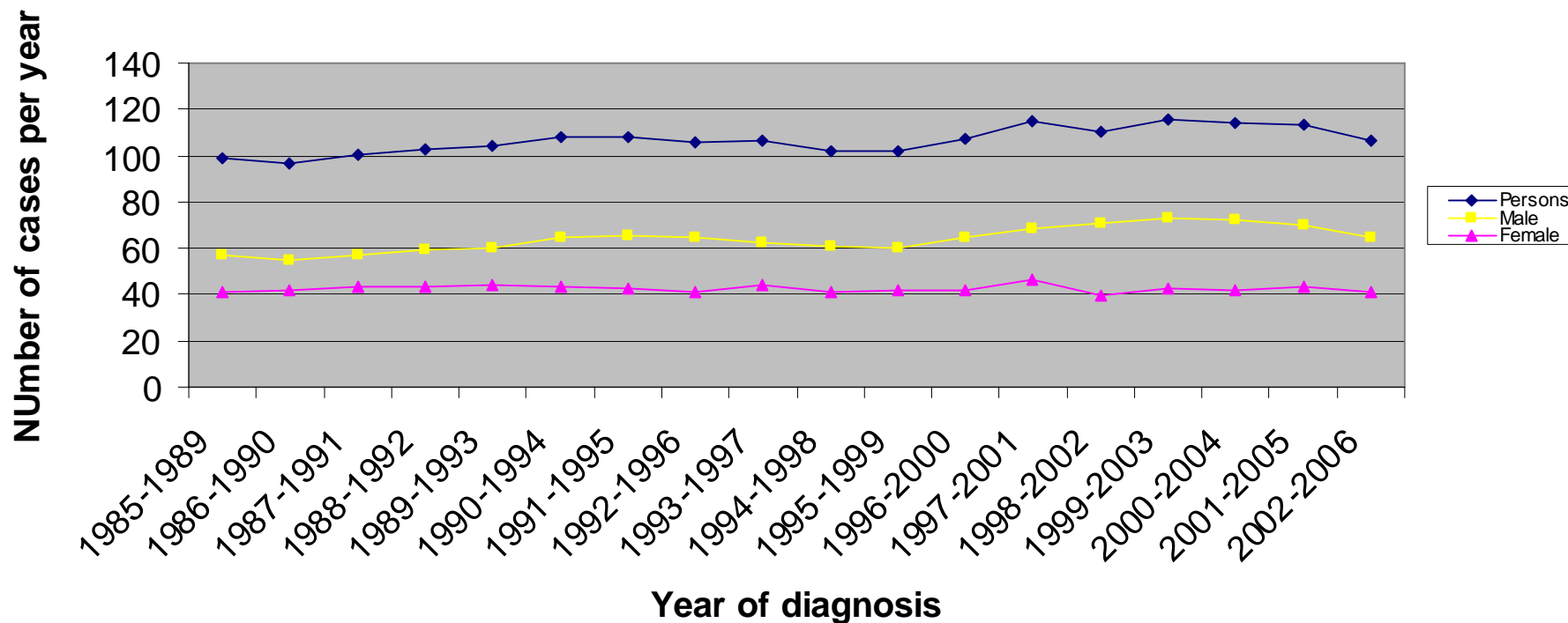
### Incidence of Upper Gastrointestinal cancer (ICD10:C15-C16+C25) in Great Yarmouth and Waveney PCT : Number of cases



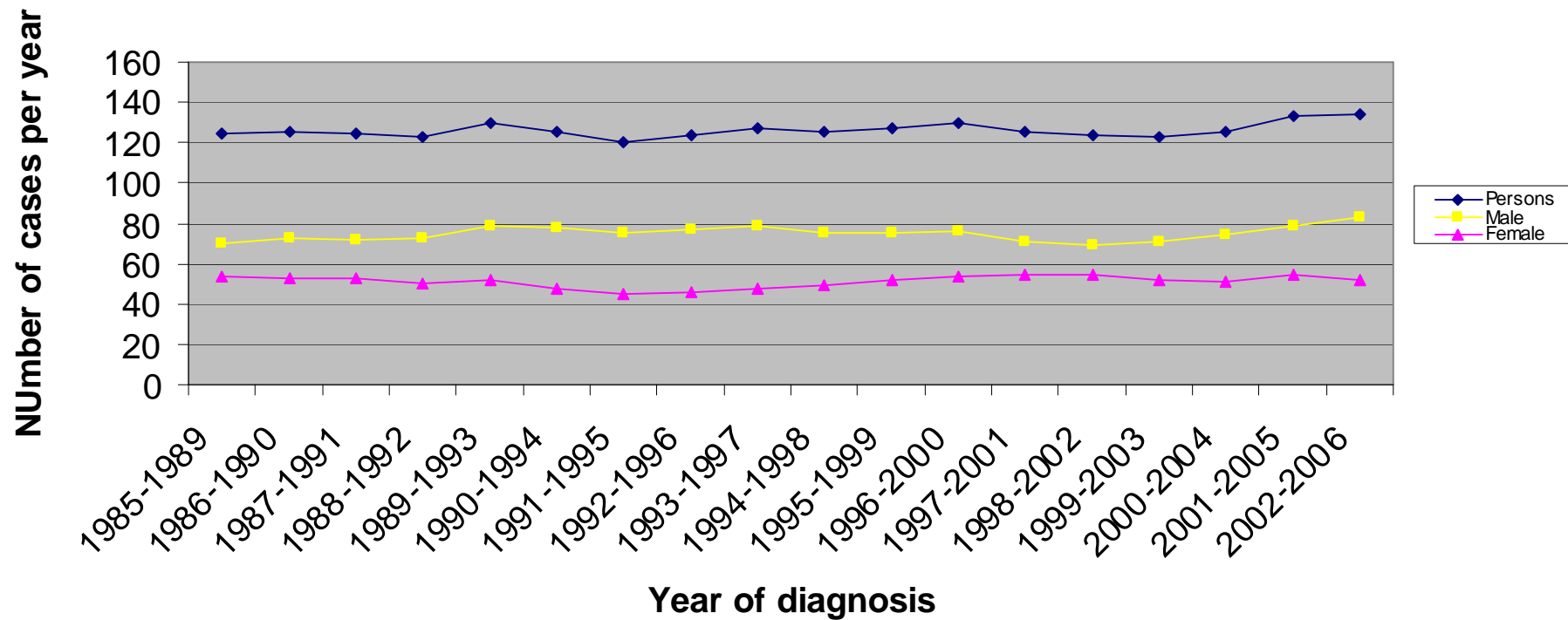
### Incidence of Upper Gastrointestinal cancer (ICD10:C15-C16+C25) in Suffolk PCT : Number of cases



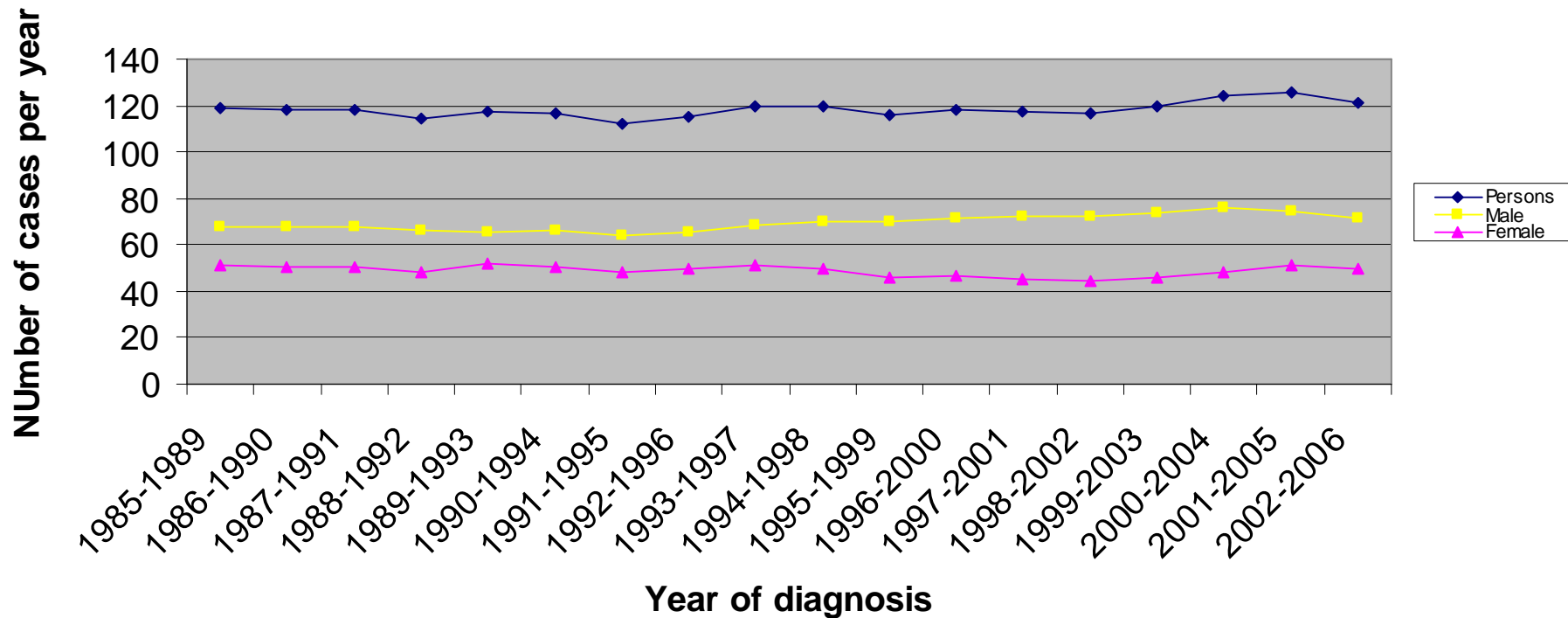
### Incidence of Upper Gastrointestinal cancer (ICD10:C15-C16+C25) in West Essex PCT : Number of cases



### Incidence of Upper Gastrointestinal cancer (ICD10:C15-C16+C25) in North East Essex PCT : Number of cases



### Incidence of Upper Gastrointestinal cancer (ICD10:C15-C16+C25) in Mid Essex PCT : Number of cases



### Incidence of Upper Gastrointestinal cancer (ICD10:C15-C16+C25) in South West Essex PCT : Number of cases

