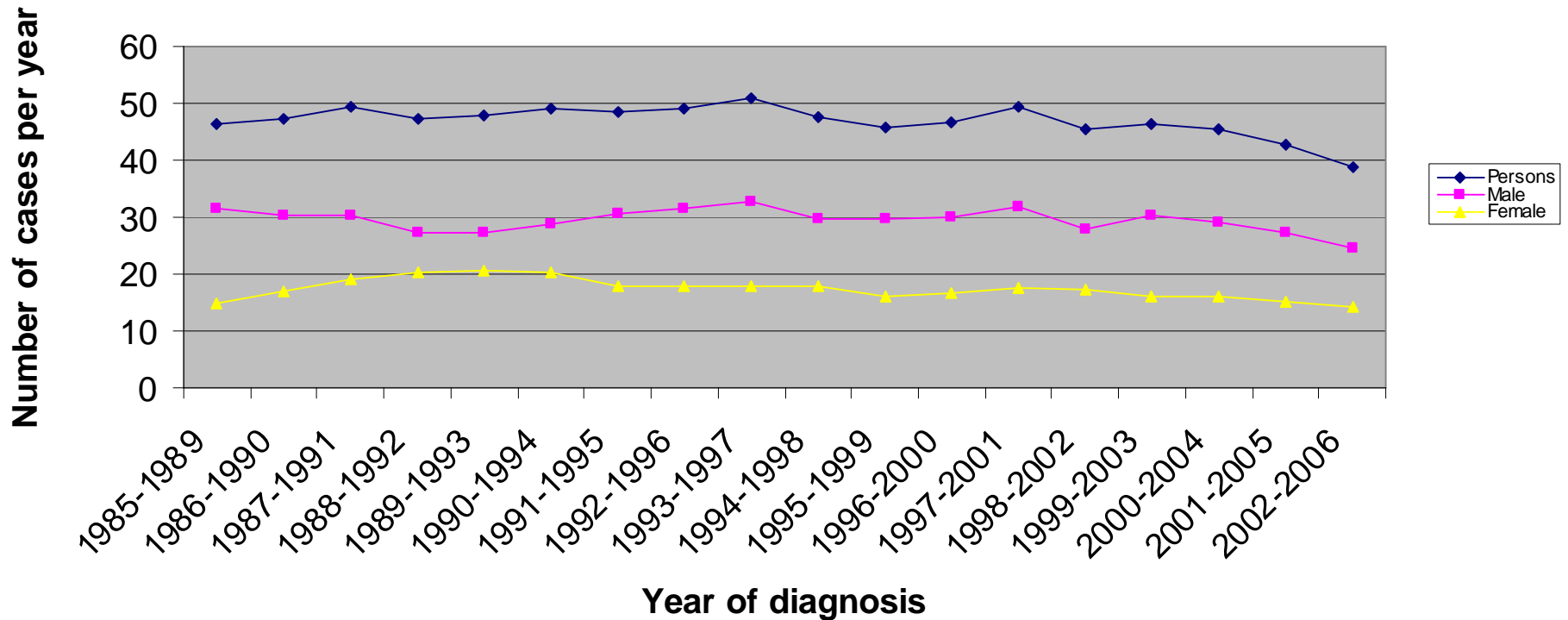
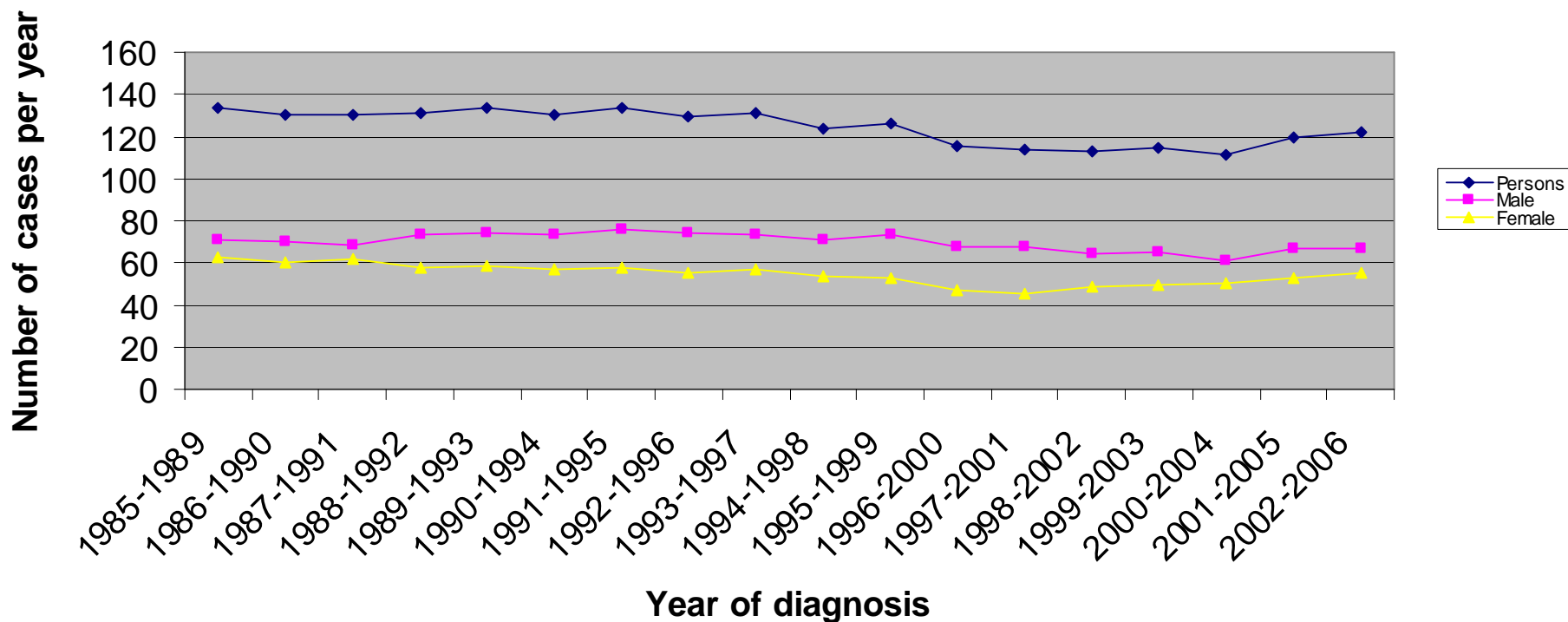


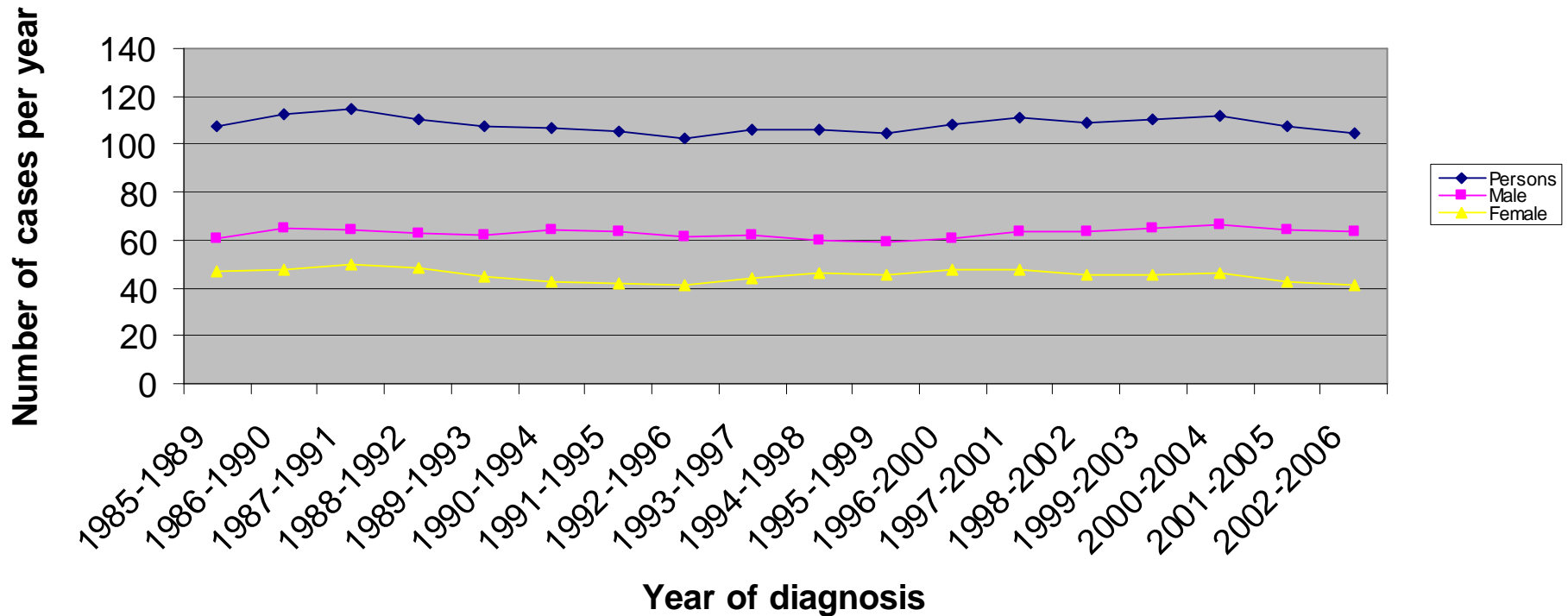
### Mortality from Upper Gastrointestinal cancer (ICD10:C15-C16+C25) in Luton PCT: Number of cases



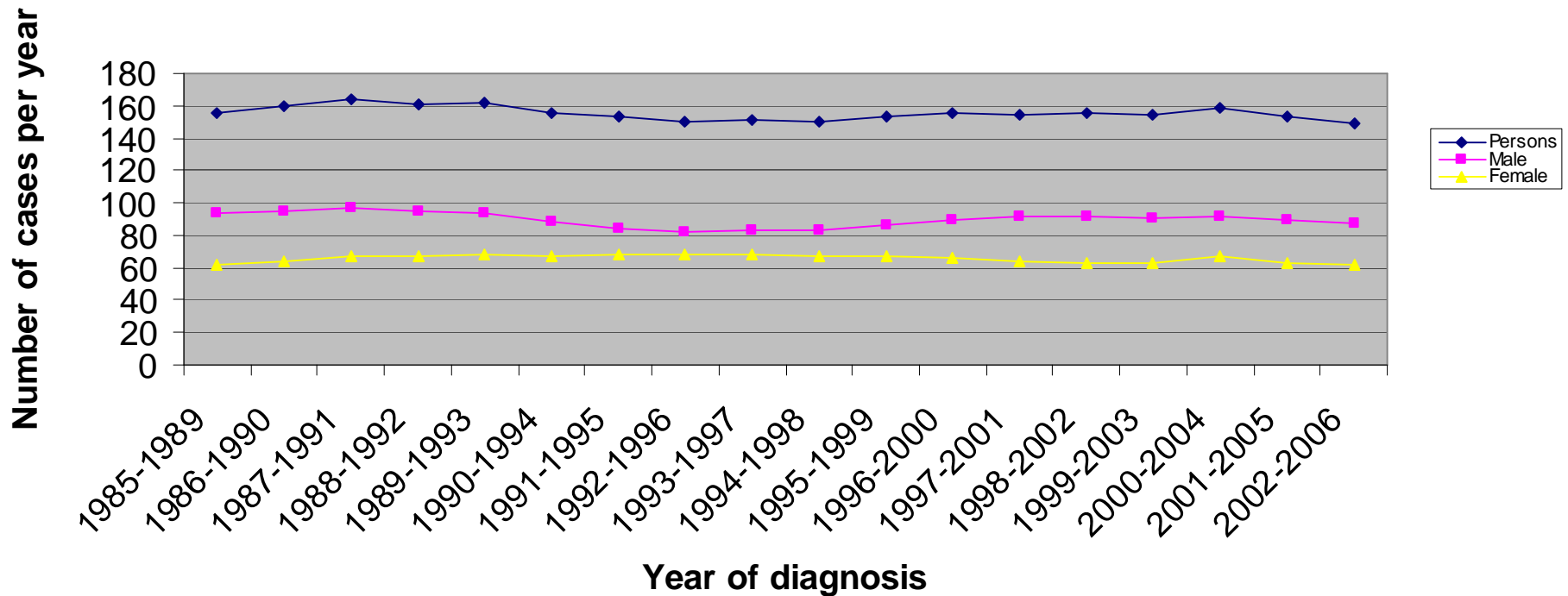
### Mortality from Upper Gastrointestinal cancer (ICD10:C15-C16+C25) in South East Essex PCT: Number of cases



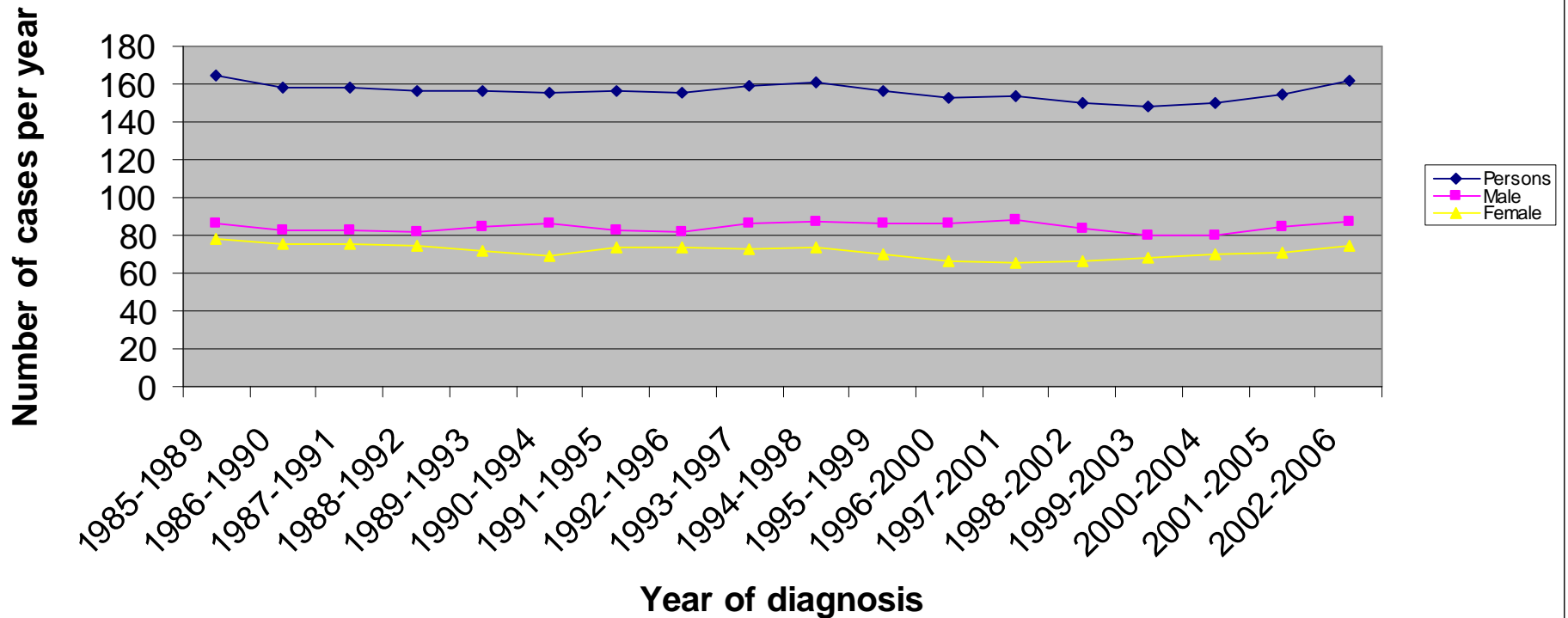
### Mortality from Upper Gastrointestinal cancer (ICD10:C15-C16+C25) in Bedfordshire PCT: Number of cases



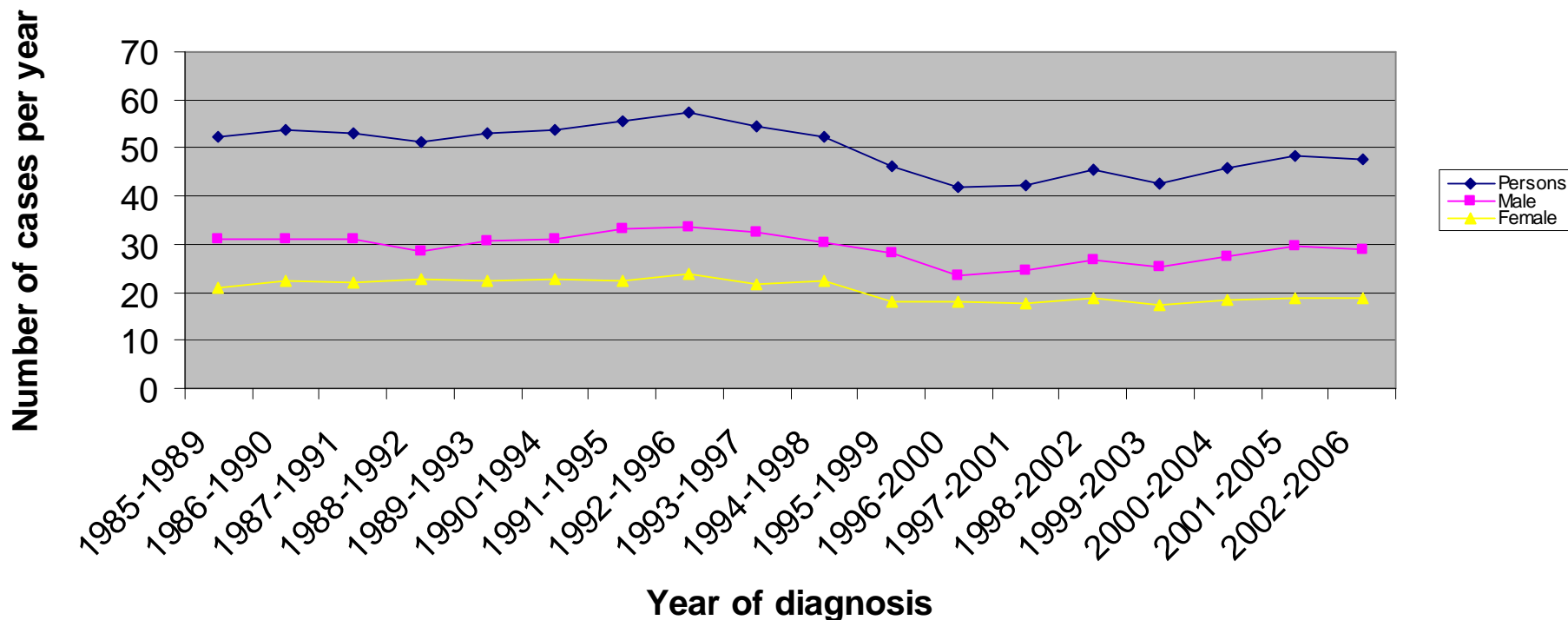
### Mortality from Upper Gastrointestinal cancer (ICD10:C15-C16+C25) in East and North Hertfordshire PCT: Number of cases



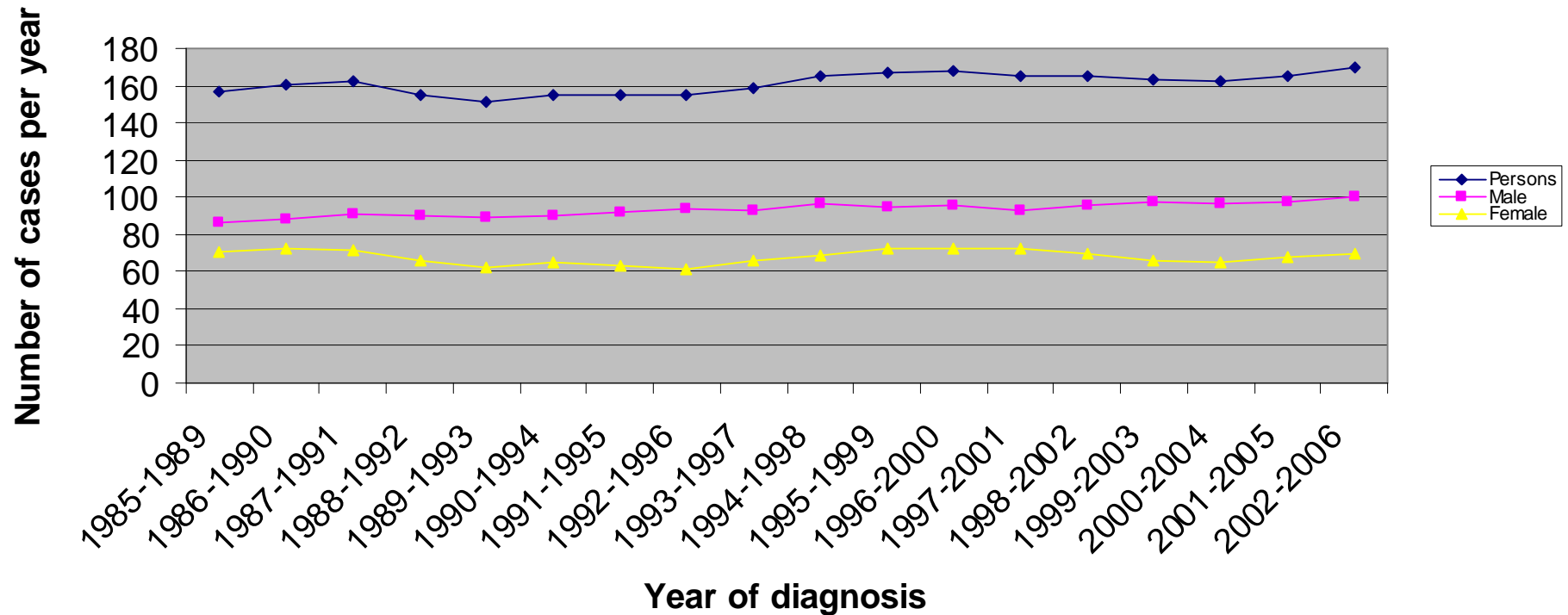
### Mortality from Upper Gastrointestinal cancer (ICD10:C15-C16+C25) in West Hertfordshire PCT: Number of cases



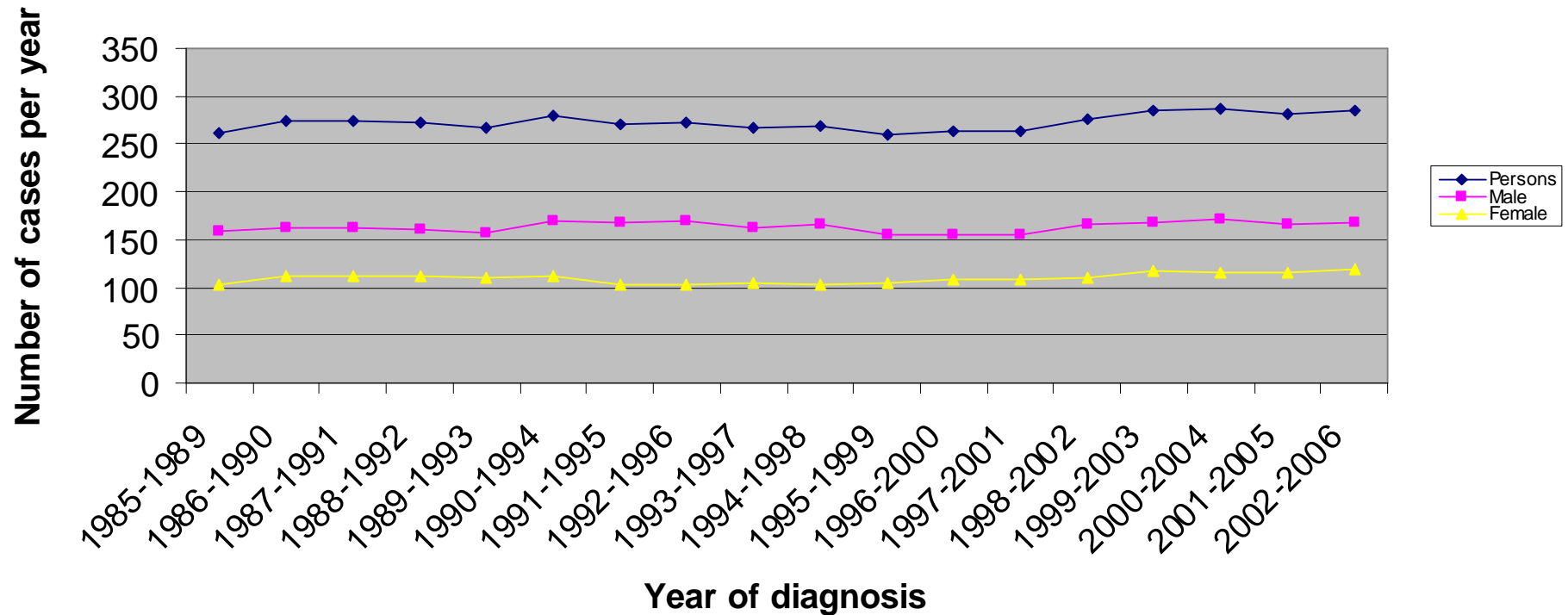
### Mortality from Upper Gastrointestinal cancer (ICD10:C15-C16+C25) in Peterborough PCT: Number of cases



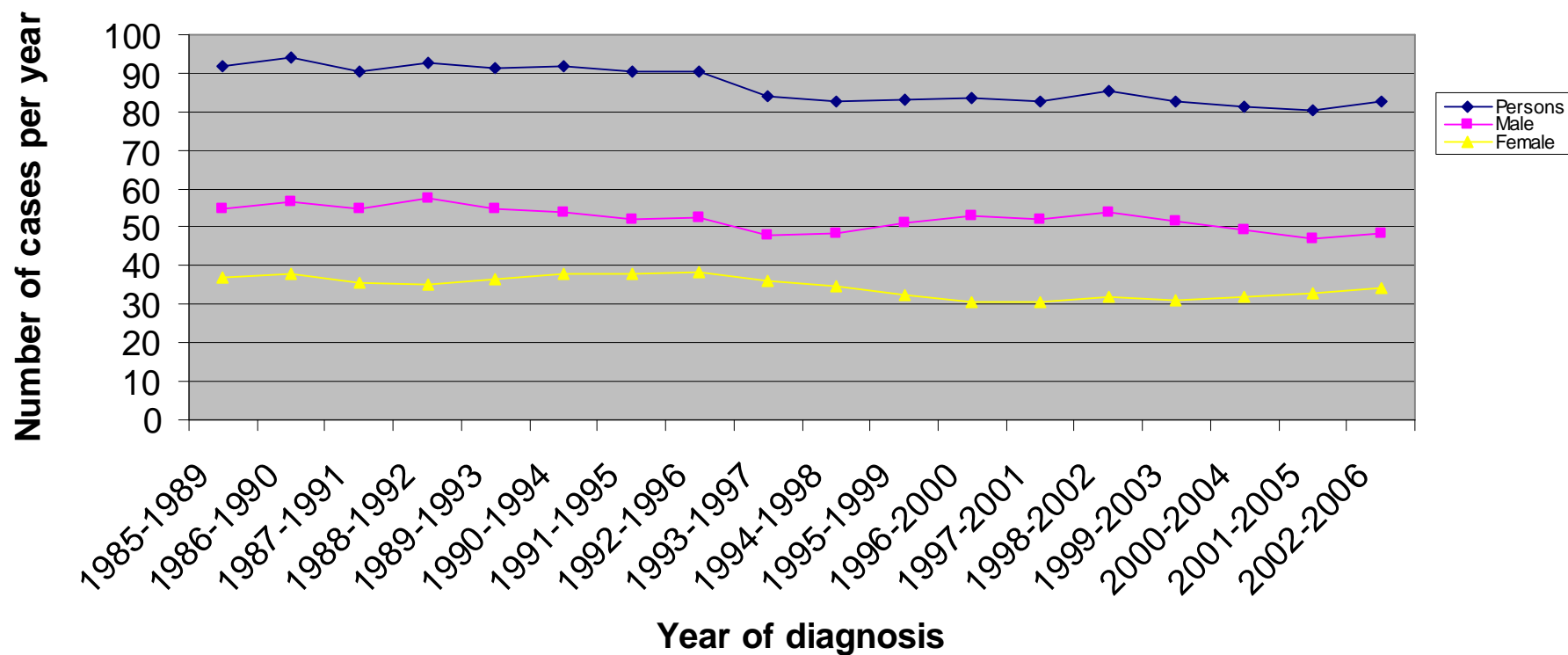
## Mortality from Upper Gastrointestinal cancer (ICD10:C15-C16+C25) in Cambridgeshire PCT: Number of cases



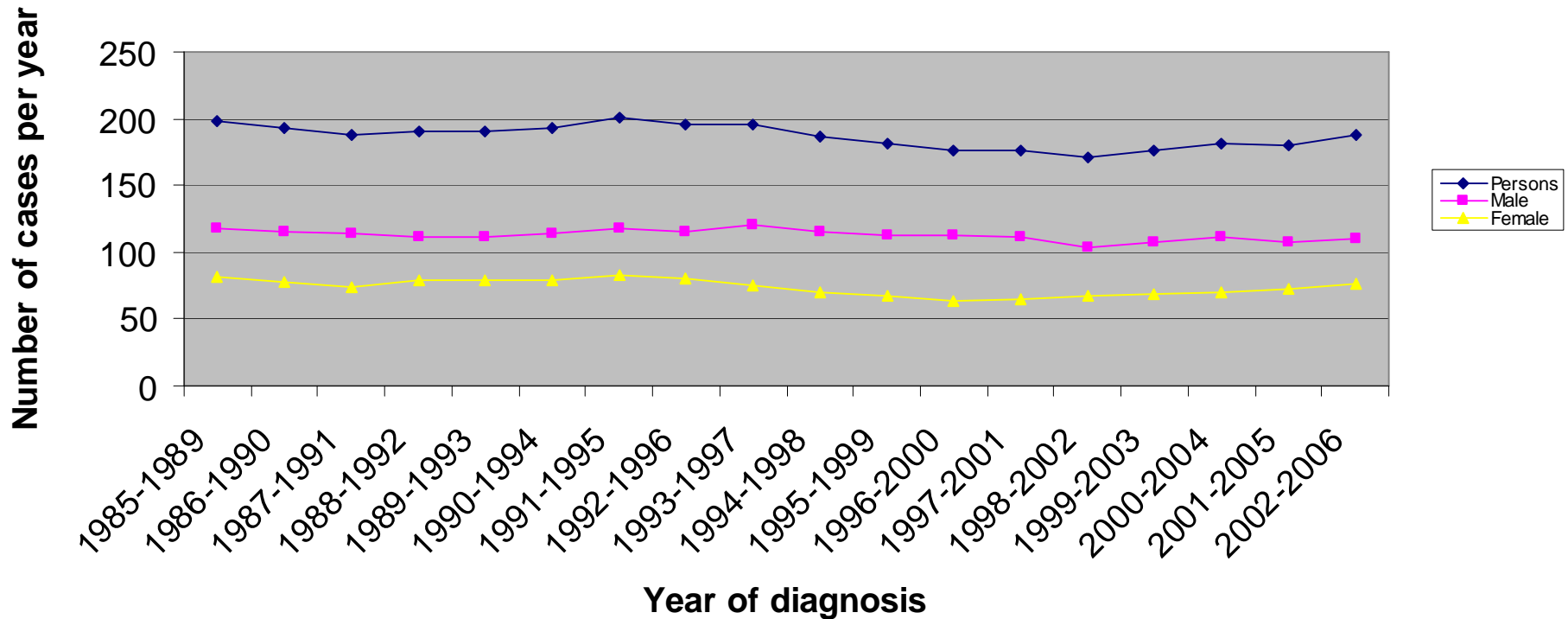
## Mortality from Upper Gastrointestinal cancer (ICD10:C15-C16+C25) in Norfolk PCT: Number of cases

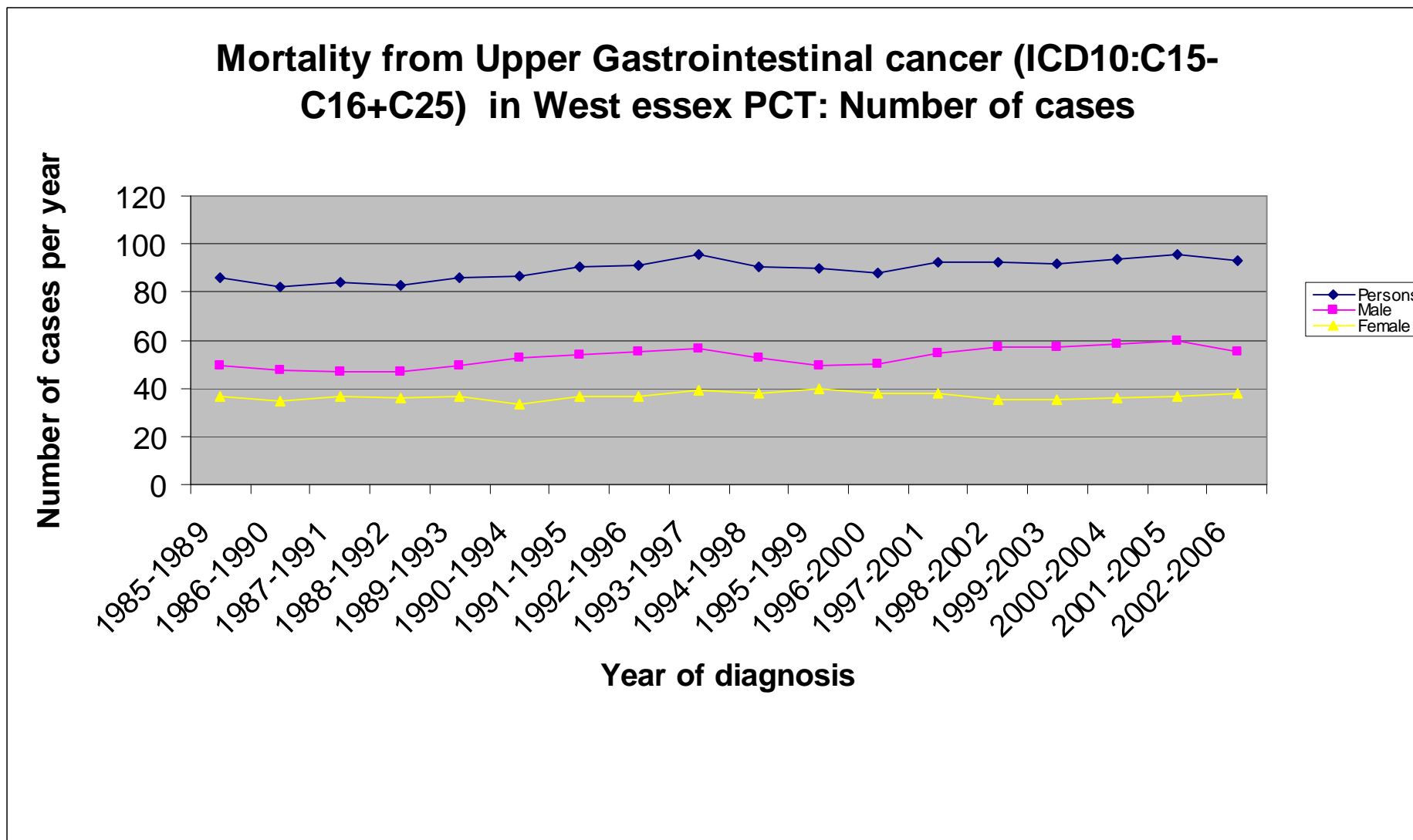


### Mortality from Upper Gastrointestinal cancer (ICD10:C15-C16+C25) in Great Yarmouth and Waveney PCT: Number of cases

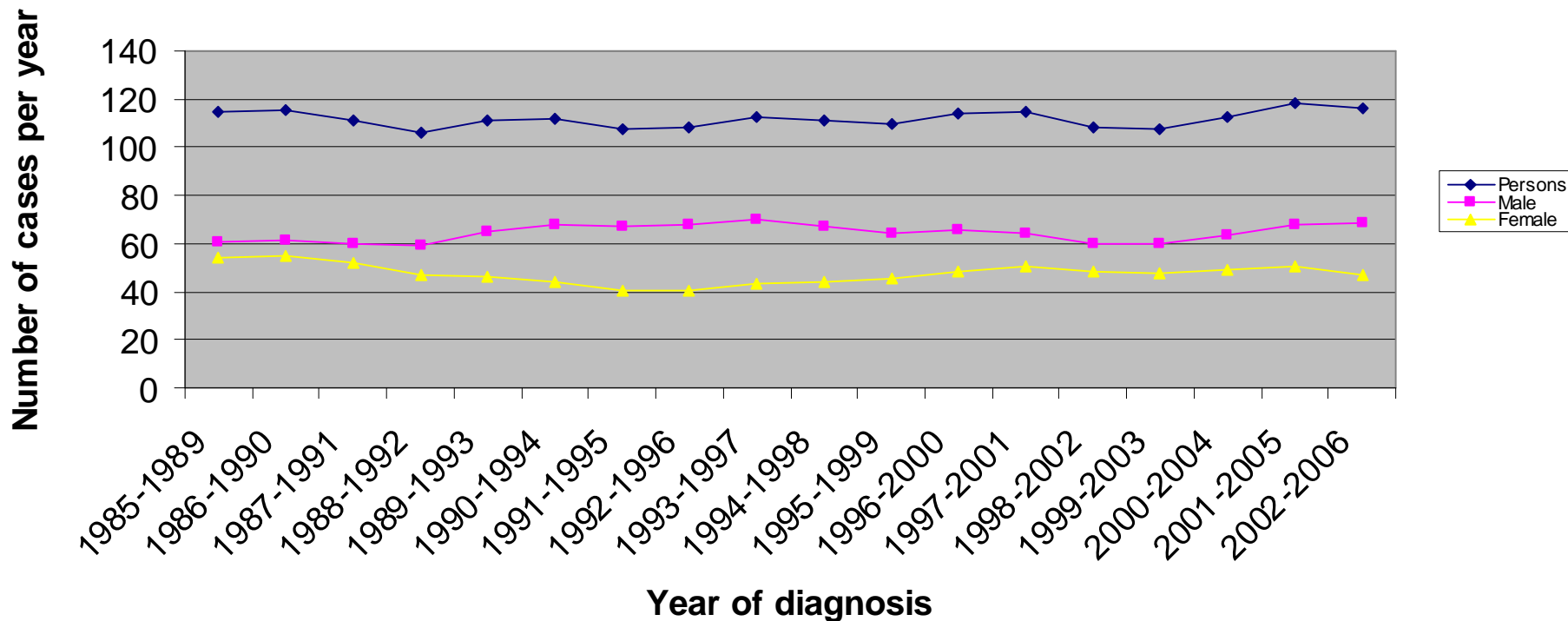


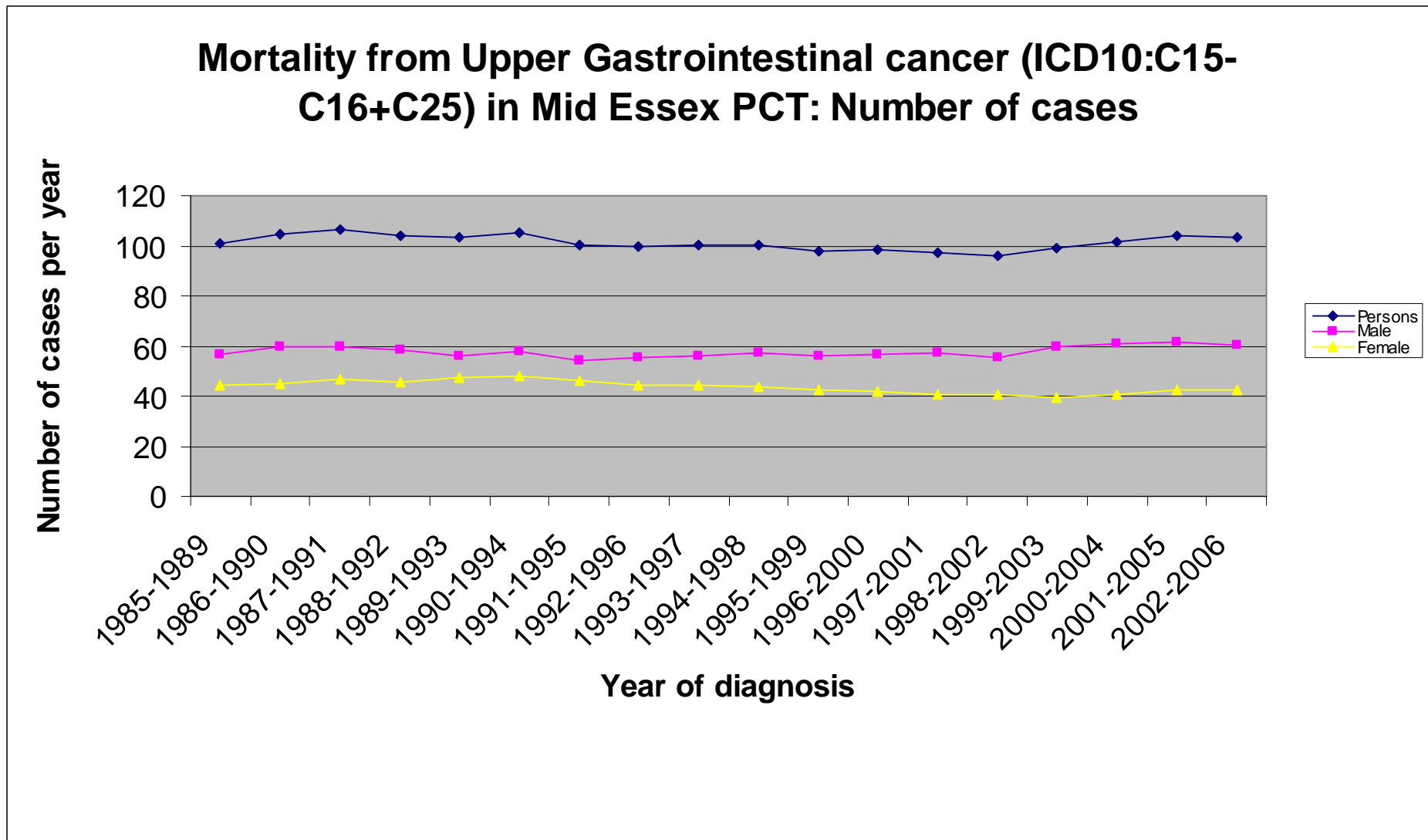
### Mortality from Upper Gastrointestinal cancer (ICD10:C15-C16+C25) in Suffolk PCT: Number of cases





### Mortality from Upper Gastrointestinal cancer (ICD10:C15-C16+C25) in North East Essex PCT: Number of cases





### Mortality from Upper Gastrointestinal cancer (ICD10:C15-C16+C25) in South West Essex PCT: Number of cases

