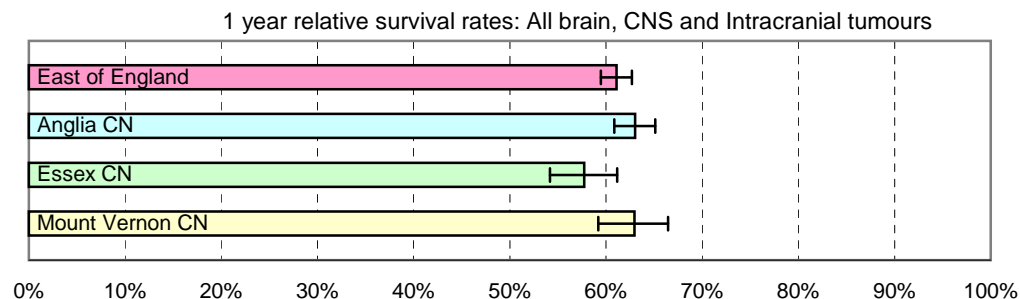


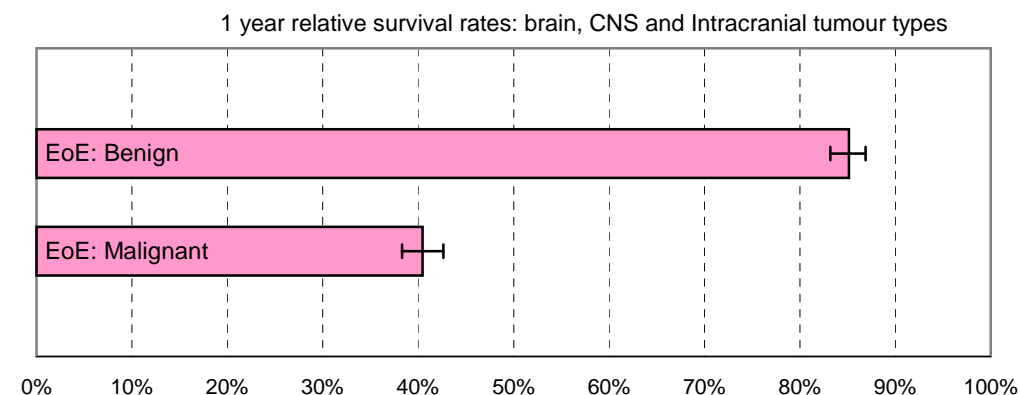
1 year relative survival rates - Brain, CNS and Intracranial tumours: ICD-10 C70-72, C75, D32, D33, D35, D42, D43, D442-444

East of England; Cancer Networks. Produced by Eastern Cancer Registration & Information Centre (ECRIC), 26 July 2010.



East of England - Cancer Networks (all brain, CNS & intracranial tumours)	Relative survival rate	Lower Confidence Interval	Upper Confidence Interval	No. of cases (annual average 2004-2008)
East of England	61.10%	59.48%	62.69%	748
Anglia CN	63.03%	60.85%	65.13%	414
Essex CN	57.74%	54.16%	61.17%	163
Mount Vernon CN	62.96%	59.21%	66.47%	144

Figures for "East of England" include cases within the North London Cancer Network



East of England (by type of tumour)	Relative survival rate	Lower Confidence Interval	Upper Confidence Interval	No. of cases (annual average 2004-2008)
Stage 0 (ICD-10 D32, D33, D35)				
EoE: Benign	85.13%	83.21%	86.88%	342
Stage X (ICD-10 C70-72, C75, D42, D43, D442-444)				
EoE: Malignant	40.47%	38.30%	42.65%	406

Stage 0 (ICD-10 D32, D33, D35)

EoE: Benign	85.13%	83.21%	86.88%	342
-------------	--------	--------	--------	-----

Stage X (ICD-10 C70-72, C75, D42, D43, D442-444)

EoE: Malignant	40.47%	38.30%	42.65%	406
----------------	--------	--------	--------	-----

The no. of cases entering the survival analysis are for first tumours diagnosed in the 5 years 2004 to 2008, amongst persons resident in the areas specified.

Error bars indicate 95% confidence intervals