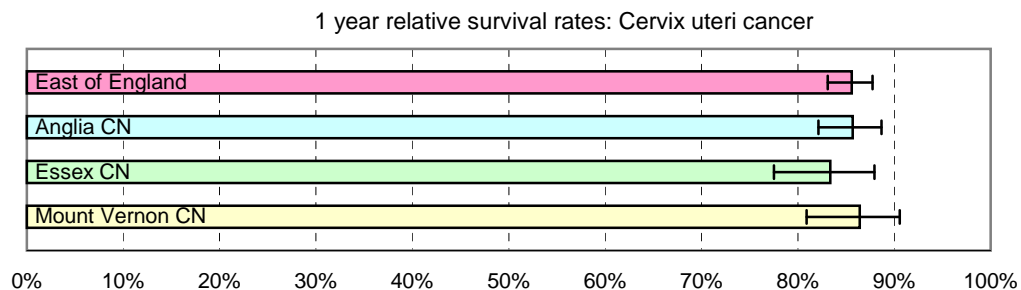


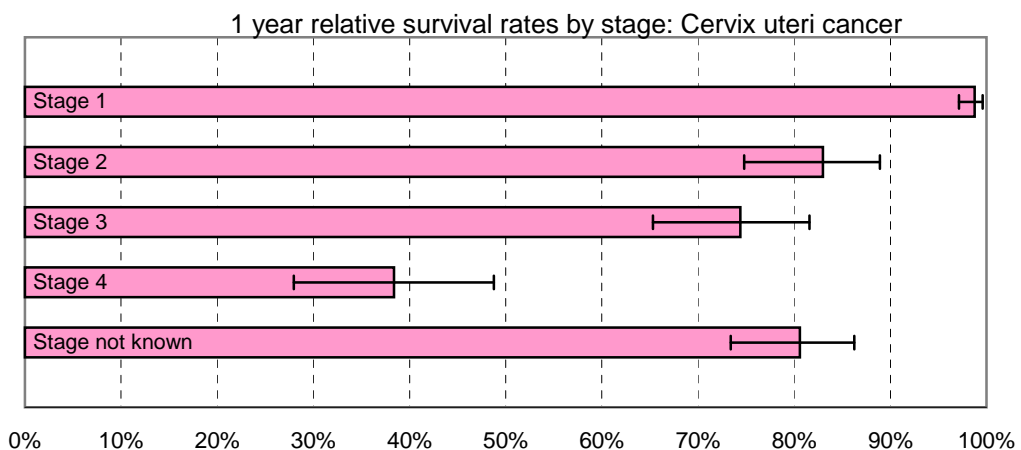
1 year relative survival rates - Cervix uteri cancer: ICD-10 C53

East of England; Cancer Networks. Produced by Eastern Cancer Registration & Information Centre (ECRIC), 26 July 2010.



East of England - Cancer Networks	Relative survival rate	Lower Confidence Interval	Upper Confidence Interval	No. of cases (annual average 2004-2008)
East of England	85.57%	83.10%	87.73%	197
Anglia CN	85.70%	82.13%	88.67%	97
Essex CN	83.37%	77.52%	87.93%	44
Mount Vernon CN	86.43%	80.89%	90.57%	43

Figures for "East of England" include cases within the North London Cancer Network



East of England (by stage of tumour at diagnosis)	Relative survival rate	Lower Confidence Interval	Upper Confidence Interval	No. of cases (annual average 2004-2008)
Stage 1	98.77%	97.14%	99.59%	97
Stage 2	82.99%	74.80%	88.92%	25
Stage 3	74.41%	65.32%	81.58%	24
Stage 4	38.37%	27.96%	48.77%	17
Stage not known	80.60%	73.40%	86.25%	34

The no. of cases entering the survival analysis are for first tumours diagnosed in the 5 years 2004 to 2008, amongst females resident in the areas specified.

Error bars indicate 95% confidence intervals