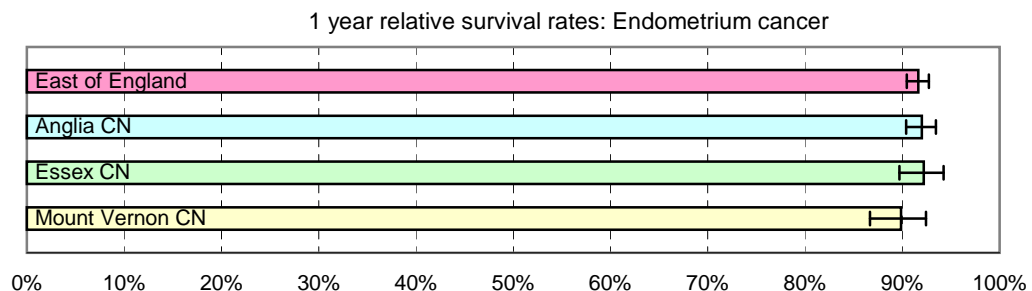


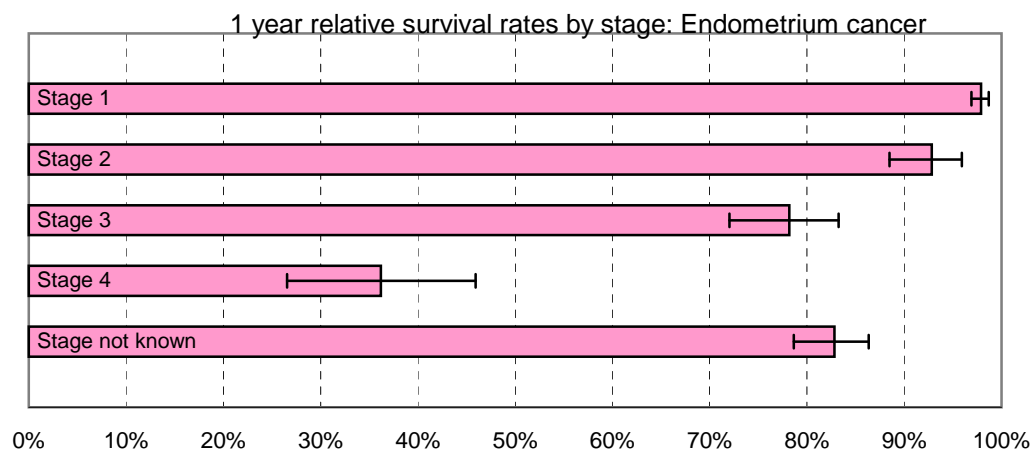
# 1 year relative survival rates - Endometrium cancer: ICD-10 C54

East of England; Cancer Networks. Produced by Eastern Cancer Registration & Information Centre (ECRIC), 26 July 2010.



East of England - Cancer Networks	Relative survival rate	Lower Confidence Interval	Upper Confidence Interval	No. of cases (annual average 2004-2008)
East of England	91.65%	90.46%	92.72%	593
Anglia CN	92.01%	90.38%	93.44%	312
Essex CN	92.21%	89.71%	94.25%	144
Mount Vernon CN	89.86%	86.68%	92.44%	107

Figures for "East of England" include cases within the North London Cancer Network



East of England (by stage of tumour at diagnosis)	Relative survival rate	Lower Confidence Interval	Upper Confidence Interval	No. of cases (annual average 2004-2008)
Stage 1	97.89%	96.90%	98.69%	385
Stage 2	92.83%	88.47%	95.91%	52
Stage 3	78.17%	72.03%	83.26%	47
Stage 4	36.18%	26.56%	45.93%	19
Stage not known	82.82%	78.65%	86.36%	89

The no. of cases entering the survival analysis are for first tumours diagnosed in the 5 years 2004 to 2008, amongst females resident in the areas specified.

Error bars indicate 95% confidence intervals