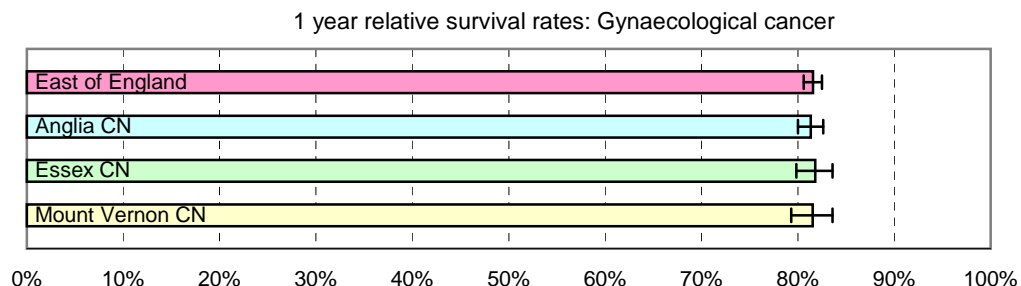


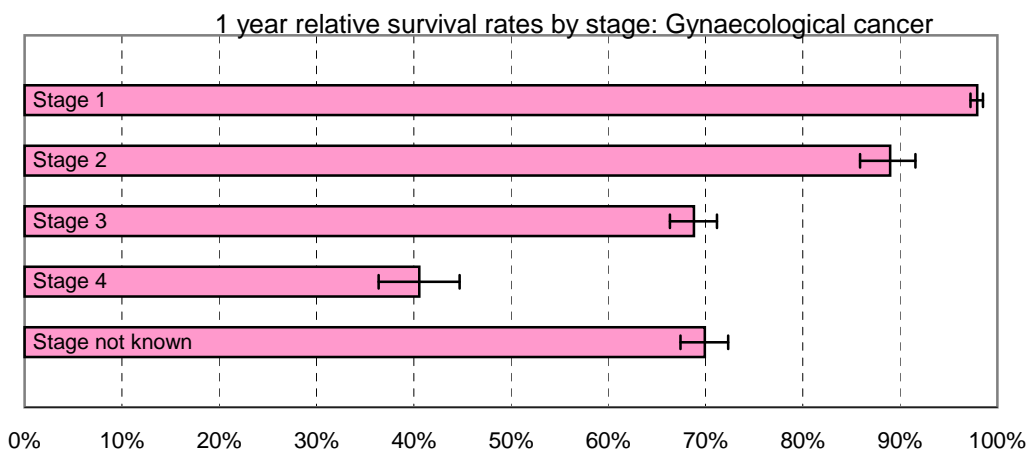
# 1 year relative survival rates - Gynaecological cancer: ICD-10 C51 - C58

East of England; Cancer Networks. Produced by Eastern Cancer Registration & Information Centre (ECRIC), 26 July 2010.



| East of England - Cancer Networks | Relative survival rate | Lower Confidence Interval | Upper Confidence Interval | No. of cases (annual average 2004-2008) |
|-----------------------------------|------------------------|---------------------------|---------------------------|---|
| East of England                   | 81.57%                 | 80.62%                    | 82.49%                    | 1501                                    |
| Anglia CN                         | 81.35%                 | 80.01%                    | 82.63%                    | 771                                     |
| Essex CN                          | 81.80%                 | 79.84%                    | 83.61%                    | 371                                     |
| Mount Vernon CN                   | 81.55%                 | 79.30%                    | 83.60%                    | 285                                     |

Figures for "East of England" include cases within the North London Cancer Network



| East of England (by stage of tumour at diagnosis) | Relative survival rate | Lower Confidence Interval | Upper Confidence Interval | No. of cases (annual average 2004-2008) |
|---|------------------------|---------------------------|---------------------------|---|
| Stage 1   | 97.93%                 | 97.22%                    | 98.52%                    | 665                                     |
| Stage 2   | 88.98%                 | 85.88%                    | 91.56%                    | 119                                     |
| Stage 3   | 68.82%                 | 66.33%                    | 71.18%                    | 305                                     |
| Stage 4   | 40.56%                 | 36.38%                    | 44.72%                    | 112                                     |
| Stage not known                                   | 69.94%                 | 67.41%                    | 72.34%                    | 300                                     |

The no. of cases entering the survival analysis are for first tumours diagnosed in the 5 years 2004 to 2008, amongst females resident in the areas specified.

Error bars indicate 95% confidence intervals