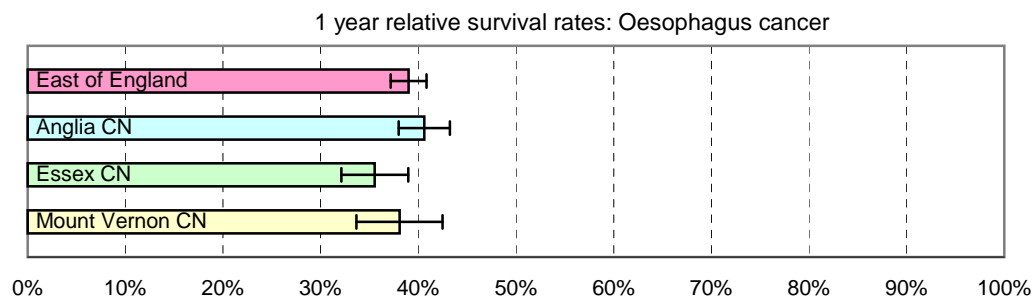


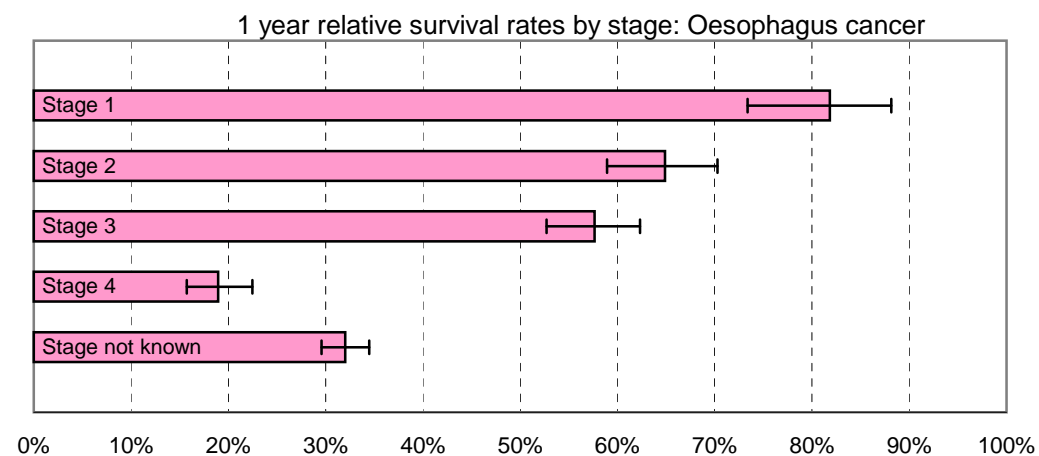
1 year relative survival rates - Oesophagus cancer: ICD-10 C15

East of England; Cancer Networks. Produced by Eastern Cancer Registration & Information Centre (ECRIC), 26 July 2010.



East of England - Cancer Networks	Relative survival rate	Lower Confidence Interval	Upper Confidence Interval	No. of cases (annual average 2004-2008)
East of England	39.00%	37.16%	40.83%	585
Anglia CN	40.60%	37.98%	43.22%	291
Essex CN	35.53%	32.11%	38.97%	161
Mount Vernon CN	38.07%	33.65%	42.49%	100

Figures for "East of England" include cases within the North London Cancer Network



East of England (by stage of tumour at diagnosis)	Relative survival rate	Lower Confidence Interval	Upper Confidence Interval	No. of cases (annual average 2004-2008)
Stage 1	81.83%	73.39%	88.17%	26
Stage 2	64.90%	58.94%	70.28%	60
Stage 3	57.66%	52.70%	62.33%	86
Stage 4	18.97%	15.72%	22.46%	108
Stage not known	32.02%	29.59%	34.48%	305

The no. of cases entering the survival analysis are for first tumours diagnosed in the 5 years 2004 to 2008, amongst persons resident in the areas specified.

Error bars indicate 95% confidence intervals