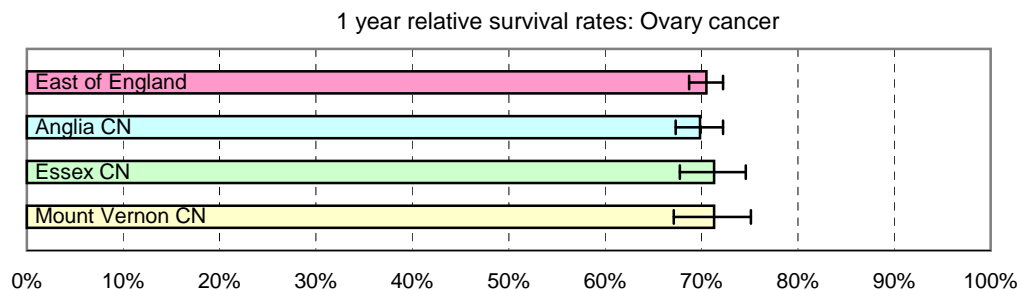


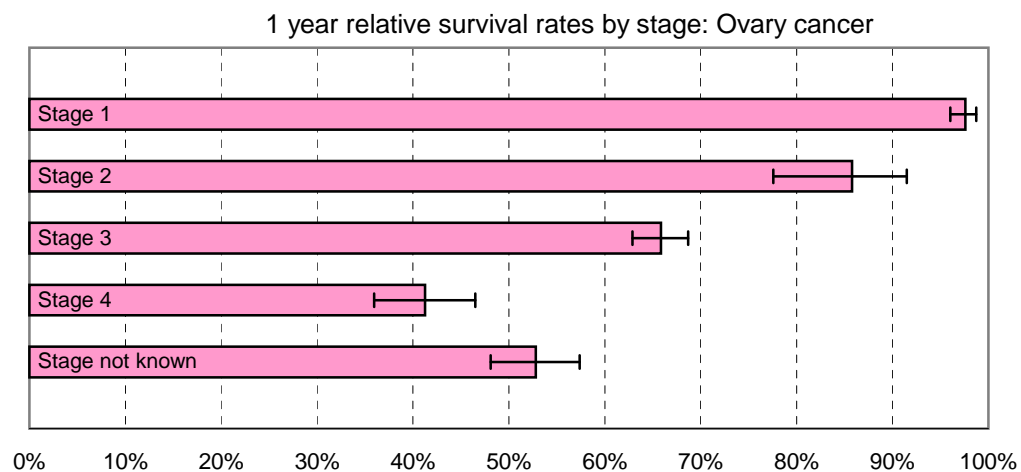
1 year relative survival rates - Ovary cancer: ICD-10 C56

East of England; Cancer Networks. Produced by Eastern Cancer Registration & Information Centre (ECRIC), 26 July 2010.



East of England - Cancer Networks	Relative survival rate	Lower Confidence Interval	Upper Confidence Interval	No. of cases (annual average 2004-2008)
East of England	70.50%	68.72%	72.22%	570
Anglia CN	69.85%	67.31%	72.25%	290
Essex CN	71.32%	67.75%	74.60%	147
Mount Vernon CN	71.32%	67.13%	75.13%	107

Figures for "East of England" include cases within the North London Cancer Network



East of England (by stage of tumour at diagnosis)	Relative survival rate	Lower Confidence Interval	Upper Confidence Interval	No. of cases (annual average 2004-2008)
Stage 1	97.61%	96.03%	98.72%	159
Stage 2	85.79%	77.56%	91.48%	23
Stage 3	65.87%	62.88%	68.70%	220
Stage 4	41.25%	35.95%	46.49%	71
Stage not known	52.82%	48.09%	57.36%	97

The no. of cases entering the survival analysis are for first tumours diagnosed in the 5 years 2004 to 2008, amongst females resident in the areas specified.

Error bars indicate 95% confidence intervals