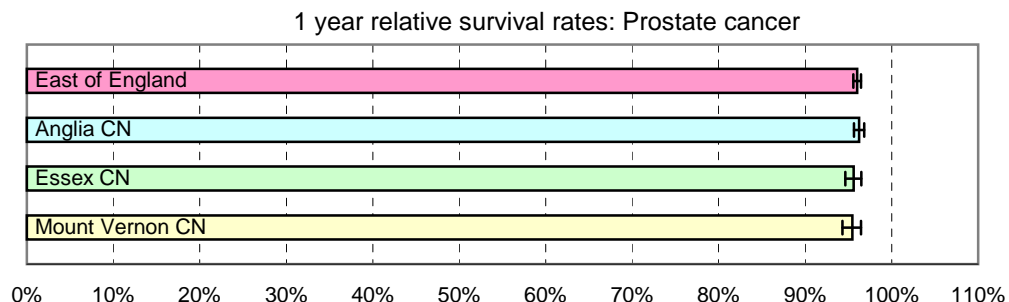


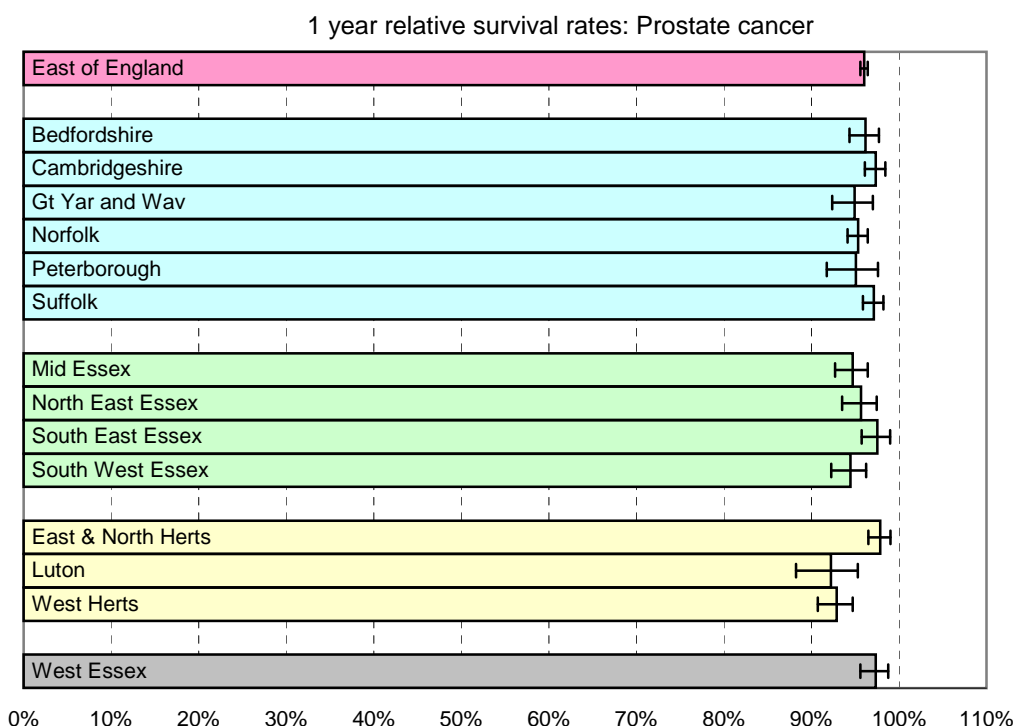
# 1 year relative survival rates - Prostate cancer: ICD-10 C61

East of England; Cancer Networks; PCTs. Produced by Eastern Cancer Registration & Information Centre (ECRIC), 26 July 2010.



East of England - Cancer Networks	Relative survival rate	Lower Confidence Interval	Upper Confidence Interval	No. of cases (annual average 2004-2008)
East of England	96.02%	95.58%	96.45%	3435
Anglia CN	96.24%	95.63%	96.82%	1816
Essex CN	95.62%	94.64%	96.50%	782
Mount Vernon CN	95.44%	94.32%	96.44%	620

Figures for "East of England" include cases within the North London Cancer Network



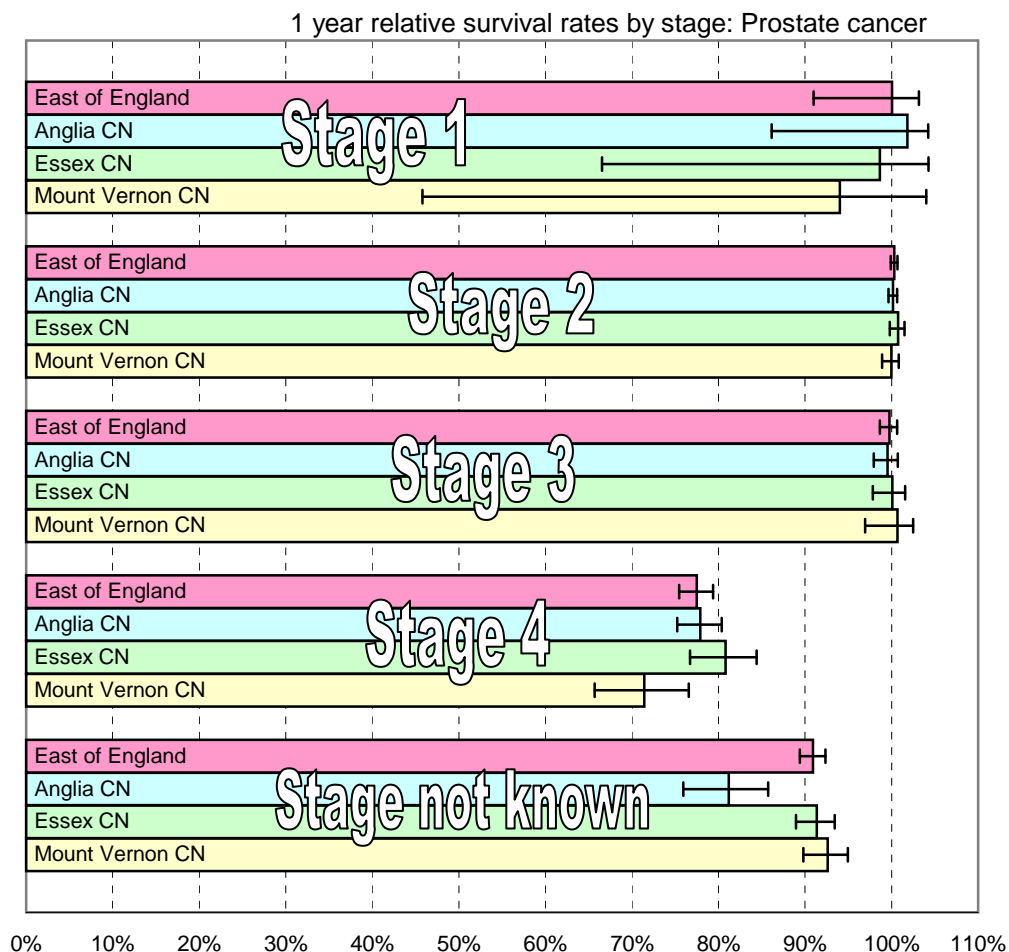
East of England - PCTs	Relative survival rate	Lower Confidence Interval	Upper Confidence Interval	No. of cases (annual average 2004-2008)
East of England	96.02%	95.58%	96.45%	3435
Bedfordshire	96.18%	94.35%	97.71%	234
Cambridgeshire	97.36%	96.10%	98.44%	385
Gt Yar and Wav	94.95%	92.39%	97.02%	145
Norfolk	95.34%	94.13%	96.42%	553
Peterborough	95.08%	91.74%	97.62%	86
Suffolk	97.13%	95.87%	98.21%	412
Mid Essex	94.73%	92.71%	96.42%	207
North East Essex	95.66%	93.49%	97.47%	187
South East Essex	97.53%	95.73%	98.98%	204
South West Essex	94.44%	92.25%	96.26%	184
East & North Herts	97.87%	96.50%	99.02%	327
Luton	92.23%	88.25%	95.31%	74
West Herts	92.87%	90.73%	94.71%	219
West Essex	97.34%	95.59%	98.77%	218

The no. of cases entering the survival analysis are for first tumours diagnosed in the 5 years 2004 to 2008, amongst males resident in the areas specified.

Error bars indicate 95% confidence intervals

# 1 year relative survival rates - Prostate cancer: ICD-10 C61

East of England; Cancer Networks; PCTs. Produced by Eastern Cancer Registration & Information Centre (ECRIC), 26 July 2010.



East of England - Cancer Networks (by stage of tumour at diagnosis)	Relative survival rate	Lower Confidence Interval	Upper Confidence Interval	No. of cases (annual average 2004-2008)
<b>Stage 1</b>				
East of England	100.05%	91.00%	103.15%	14
Anglia CN	101.81%	86.14%	104.23%	7
Essex CN	98.65%	66.54%	104.28%	3
Mount Vernon CN	94.01%	45.79%	104.02%	2
<b>Stage 2</b>				
East of England	100.30%	99.91%	100.67%	2150
Anglia CN	100.17%	99.63%	100.65%	1289
Essex CN	100.74%	99.78%	101.49%	375
Mount Vernon CN	99.97%	98.91%	100.82%	371
<b>Stage 3</b>				
East of England	99.74%	98.63%	100.64%	341
Anglia CN	99.53%	97.95%	100.71%	186
Essex CN	100.07%	97.82%	101.55%	99
Mount Vernon CN	100.67%	96.95%	102.48%	42
<b>Stage 4</b>				
East of England	77.47%	75.46%	79.38%	449
Anglia CN	77.91%	75.25%	80.38%	262
Essex CN	80.81%	76.71%	84.42%	106
Mount Vernon CN	71.44%	65.68%	76.57%	65
<b>Stage not known</b>				
East of England	90.93%	89.38%	92.34%	482
Anglia CN	81.20%	75.94%	85.75%	72
Essex CN	91.36%	88.96%	93.43%	199
Mount Vernon CN	92.61%	89.80%	94.96%	141

Figures for "East of England" include cases within the North London Cancer Network

The no. of cases entering the survival analysis are for first tumours diagnosed in the 5 years 2004 to 2008, amongst males resident in the areas specified.

Error bars indicate 95% confidence intervals