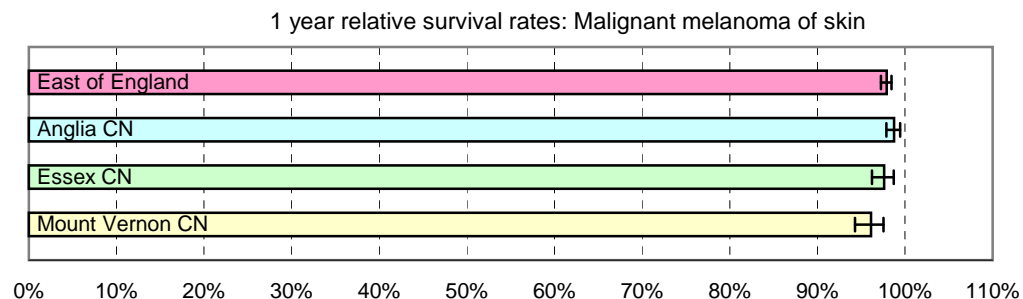


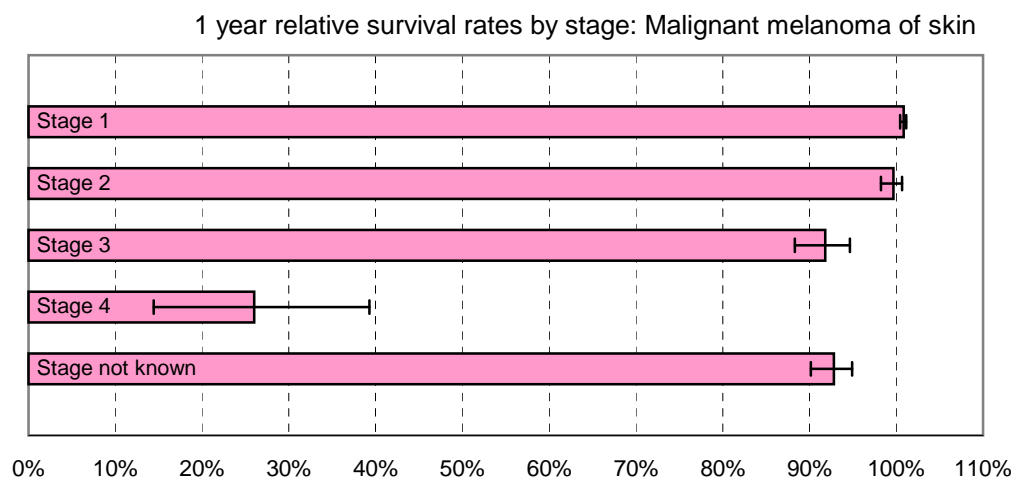
# 1 year relative survival rates - Malignant melanoma of skin: ICD-10 C43

East of England; Cancer Networks. Produced by Eastern Cancer Registration & Information Centre (ECRIC), 26 July 2010.



East of England - Cancer Networks	Relative survival rate	Lower Confidence Interval	Upper Confidence Interval	No. of cases (annual average 2004-2008)
East of England	97.90%	97.25%	98.47%	926
Anglia CN	98.75%	97.88%	99.46%	472
Essex CN	97.62%	96.22%	98.70%	235
Mount Vernon CN	96.12%	94.29%	97.55%	177

Figures for "East of England" include cases within the North London Cancer Network



East of England (by stage of tumour at diagnosis)	Relative survival rate	Lower Confidence Interval	Upper Confidence Interval	No. of cases (annual average 2004-2008)
Stage 1	100.87%	100.43%	101.16%	518
Stage 2	99.66%	98.22%	100.68%	180
Stage 3	91.82%	88.30%	94.64%	93
Stage 4	25.99%	14.44%	39.27%	10
Stage not known	92.82%	90.16%	94.93%	125

The no. of cases entering the survival analysis are for first tumours diagnosed in the 5 years 2004 to 2008, amongst persons resident in the areas specified.

Error bars indicate 95% confidence intervals