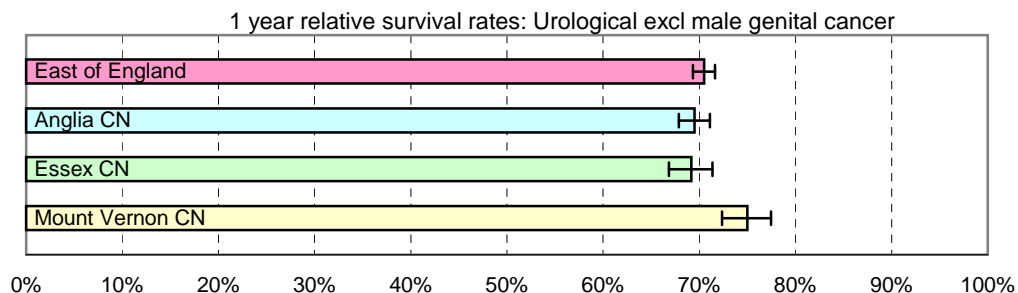


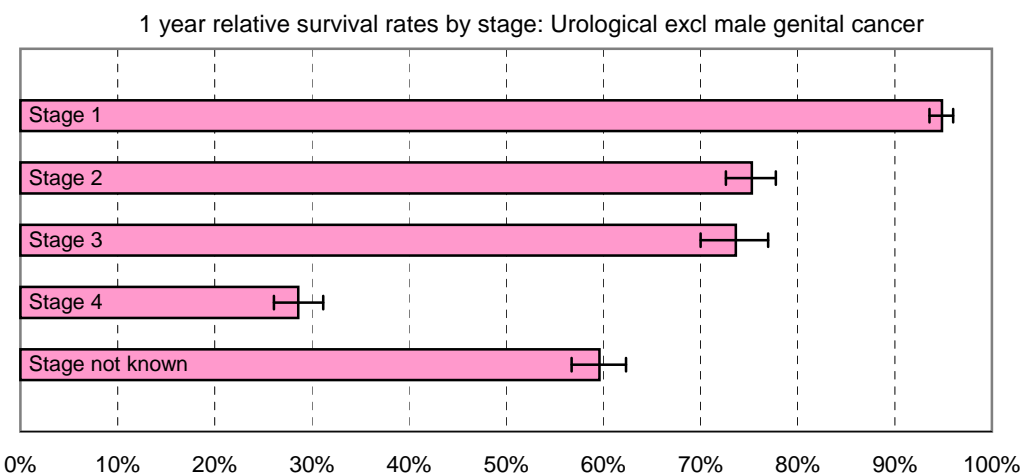
1 year relative survival rates - Urological excl male genital cancer: ICD-10 C64 - C68

East of England; Cancer Networks. Produced by Eastern Cancer Registration & Information Centre (ECRIC), 26 July 2010.



East of England - Cancer Networks	Relative survival rate	Lower Confidence Interval	Upper Confidence Interval	No. of cases (annual average 2004-2008)
East of England	70.49%	69.34%	71.63%	1425
Anglia CN	69.52%	67.87%	71.12%	722
Essex CN	69.16%	66.83%	71.38%	368
Mount Vernon CN	75.01%	72.38%	77.47%	267

Figures for "East of England" include cases within the North London Cancer Network



East of England (by stage of tumour at diagnosis)	Relative survival rate	Lower Confidence Interval	Upper Confidence Interval	No. of cases (annual average 2004-2008)
Stage 1	94.87%	93.58%	96.01%	492
Stage 2	75.28%	72.61%	77.77%	264
Stage 3	73.64%	70.00%	76.97%	142
Stage 4	28.61%	26.10%	31.18%	257
Stage not known	59.60%	56.75%	62.34%	271

The no. of cases entering the survival analysis are for first tumours diagnosed in the 5 years 2004 to 2008, amongst persons resident in the areas specified.

Error bars indicate 95% confidence intervals